



CONTACT:
Denise Ihrig, Environmental Engineer
563-690-6034
DIhrig@cityofdubuque.org
www.cityofdubuque.org/iandi

NEWS RELEASE

Dec. 17, 2014 – For Immediate Release

Smoke Testing of Sanitary Sewer Planned for Dec.18

DUBUQUE, Iowa – The City of Dubuque Engineering and Public Works Departments continue to inspect the sanitary sewer system for signs of excessive wear and tear, as well as for structural defects and storm water pipeline cross connections. Through the Inflow and Infiltration (I&I) Reduction Program, the Engineering Department will conduct smoke testing in selected areas on Thursday, Dec. 18. Smoke testing is most effective to examine large cross connections with the storm sewer and sanitary sewer systems.

Smoke testing of the sanitary sewer system will be conducted in the area bounded approximately by 32nd Street to the south, Heritage Trail to the east, the city limits to the north, and Central Avenue and Olympic Heights subdivision to the west. (See map attached.) An inspection crew will travel throughout the neighborhood, lifting manhole lids, setting out testing equipment, and entering yards to observe and record the smoke testing.

The goal of the I&I Reduction Program is to reduce the amount of rainwater and groundwater that enters the sanitary sewer system during wet weather. Allowing these clean water connections causes sanitary sewer back-ups into basements, overflows into creeks and wetlands, and increased operating costs to process the water at the Water and Resource Recovery Center. Removing this clean water will reduce collection and treatment costs, allow the sanitary sewer system to work more effectively, allow the City to optimize the performance of the existing pipe system and treatment, and minimize sanitary sewer backups into basements.

Smoke testing consists of introducing Hurco LiquiSmoke (manufacturer and product), which is a non-toxic smoke, into sanitary sewer pipe sections under moderate pressure. The crews will document where the smoke is emitted and prioritize needed repairs. Since the smoke will be placed into the sewer system that is connected to homes, residents are encouraged to pour tap water into their floor drains and sinks. This

small amount of water creates a seal that keeps the smoke out of the homes. Residents do not need to be present during smoke testing.

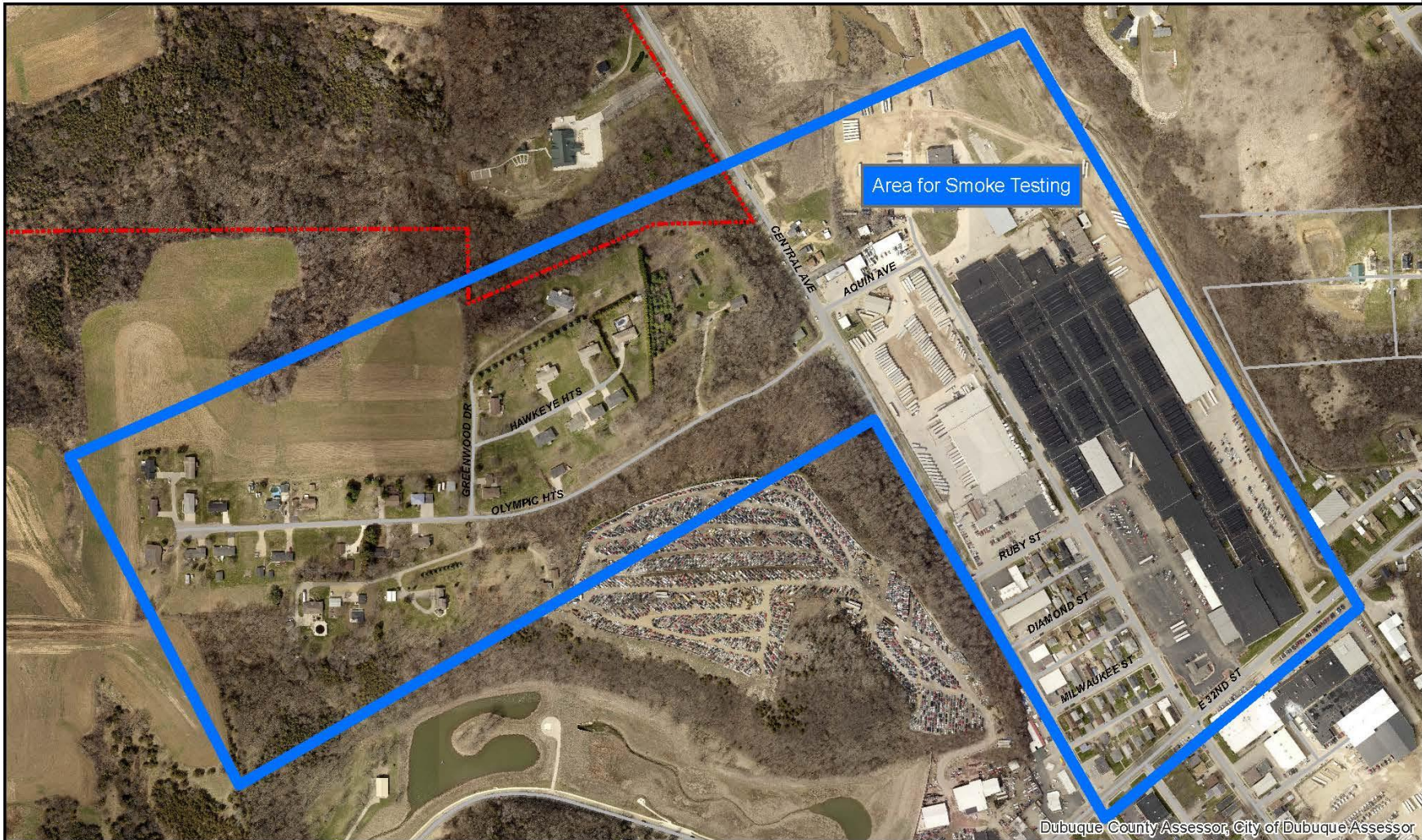
Dry traps, drains without traps, and other plumbing defects will allow the smoke to enter the dwelling connected to the sewer line that is being tested. The smoke is non-toxic, leaves no residue, and creates no fire hazard. Should a resident have concerns, please consult the Hurco LiquiSmoke MSDS (Material Safety Data Sheet) for further information. This information can be found at <http://www.cityofdubuque.org/1526/Smoke-Testing> or you can call the I&I Hotline at (563) 690-6113 or the City Engineering office at (563) 589-4270 for a copy of the information. If a resident is present and smoke enters the house or building, please report all locations to the work crews (563-513-8966) and open a window to allow the smoke to dissipate. It may also be desirable to contact a plumber if the smoke enters the house in a manner other than a dry drain trap.

For more information on the I&I Reduction Program and sanitary sewer smoke testing, visit www.cityofdubuque.org/iandi or call the I&I information line at 563-690-6113.

#

MAP ATTACHED

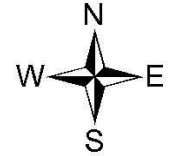
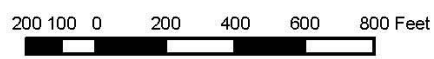
Smoke Testing Area



Dubuque County Assessor, City of Dubuque Assessor

DISCLAIMER: This information was compiled using the Dubuque Area Geographic Information System (DAGIS), which includes data created by both the City of Dubuque and Dubuque County. It is understood that, while the City of Dubuque and participating agencies utilized the most current and accurate information available, DAGIS and it's suppliers do not warrant the accuracy or currency of the information or data contained herein. The City and participating agencies shall not be held liable for any direct, indirect, incidental, consequential, punitive, or special damages, whether foreseeable or unforeseeable, arising out of the authorized or unauthorized use of this data or the inability to use this data or out of any breach of warranty whatsoever.

1 inch = 500 feet



Map Prepared by
City of Dubuque
Engineering Division
50 West 13th Street
Dubuque, Iowa 52001
Phone: (563) 589-4270
Fax: (563) 589-4208