

Source: Dubuque Area Geographical Information System (DAGIS), dated 2009



**Drainage Basins
Within City Limits**

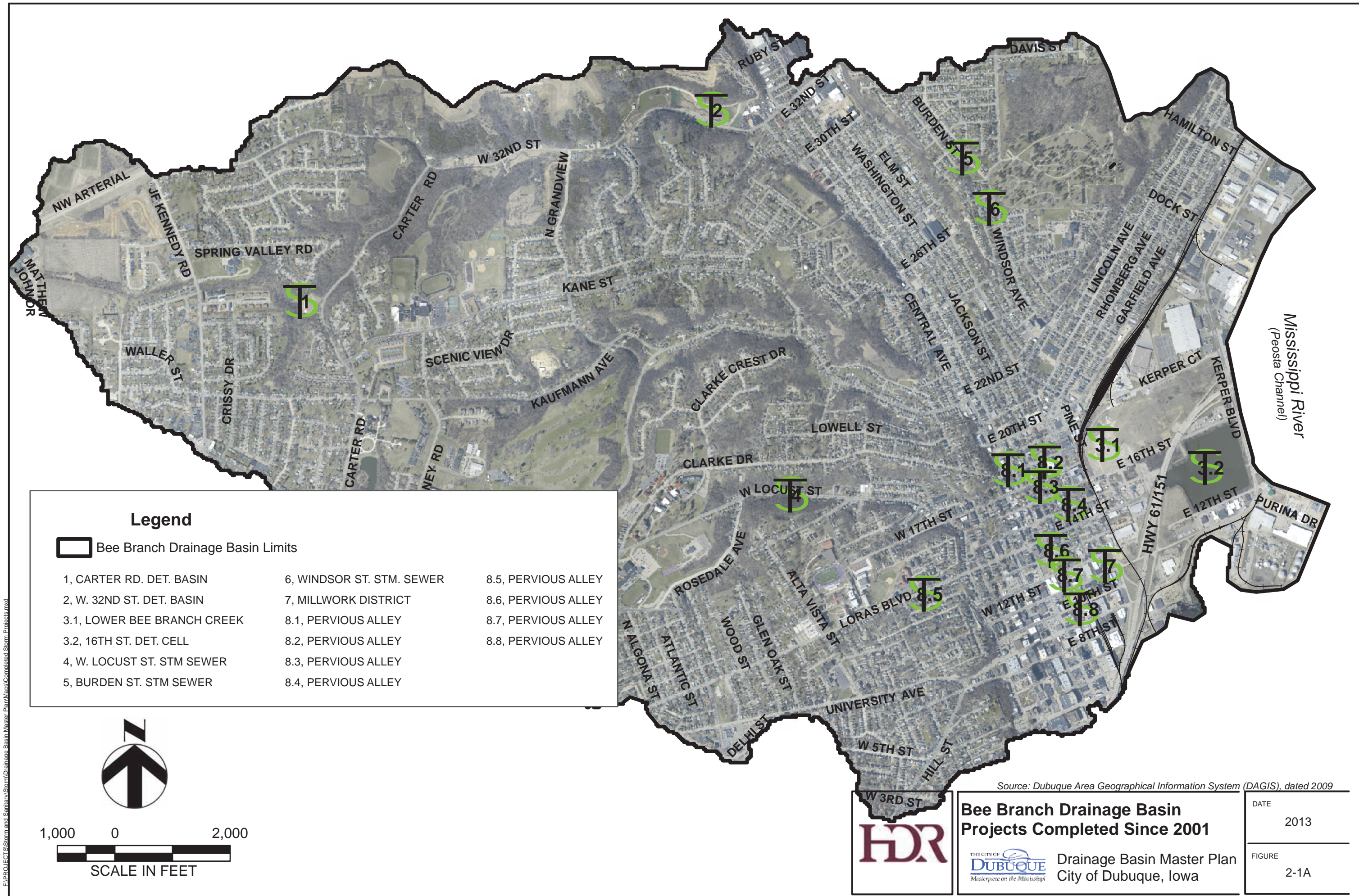


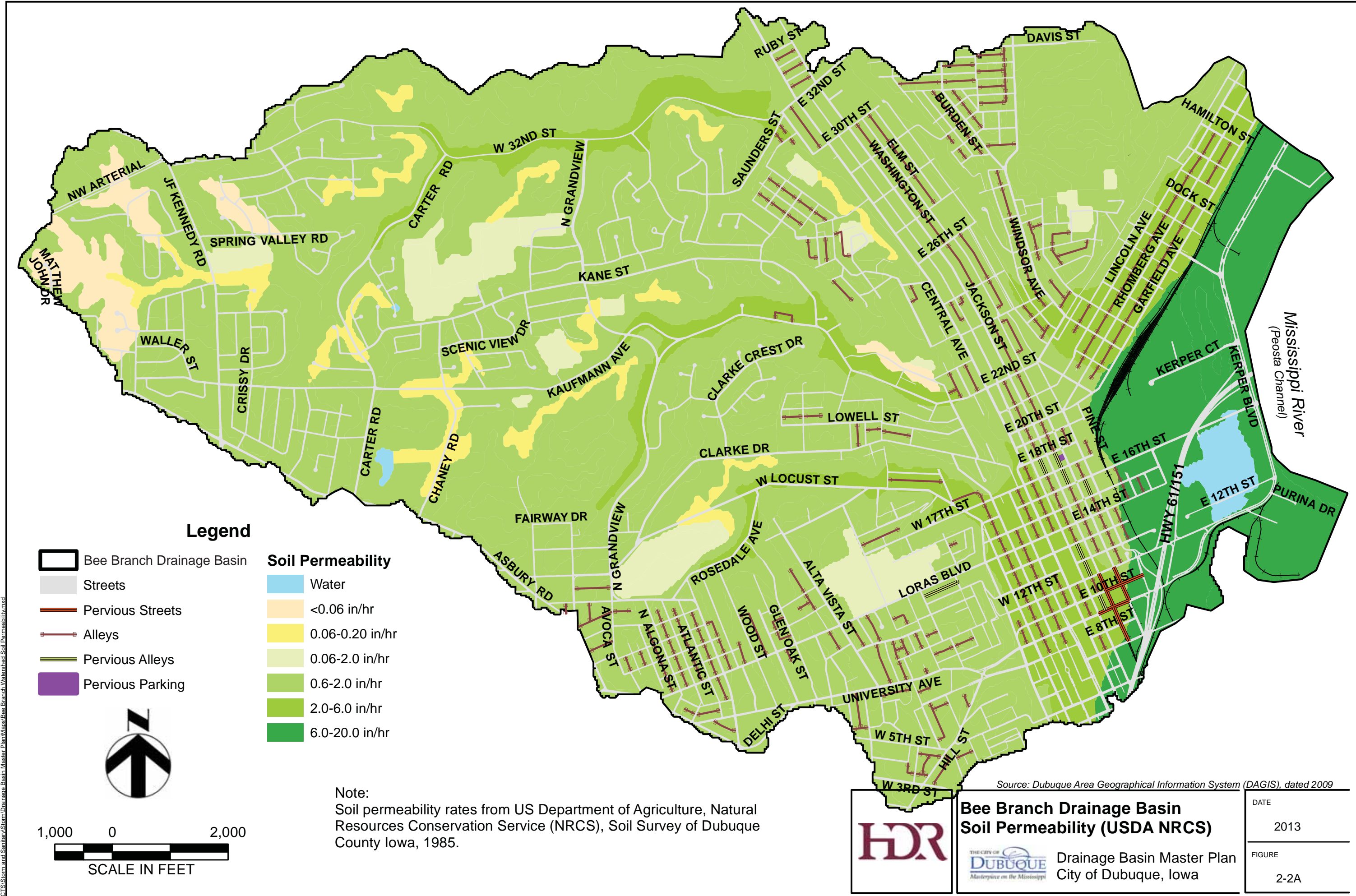
Drainage Basin Master Plan
City of Dubuque, Iowa

DATE
2013

FIGURE
1-1A


F:\PROJECTS\Storm and Sanitary\Storm\Drainage Basin Master Plan\Map\Completed Storm Projects.mxd






\\projects\storm and sanitary\storm\drainage basin master plan\map\Bee Branch Watershed Soil Permeability.mxd

Source: Dubuque Area Geographical Information System (DAGIS), dated 2009



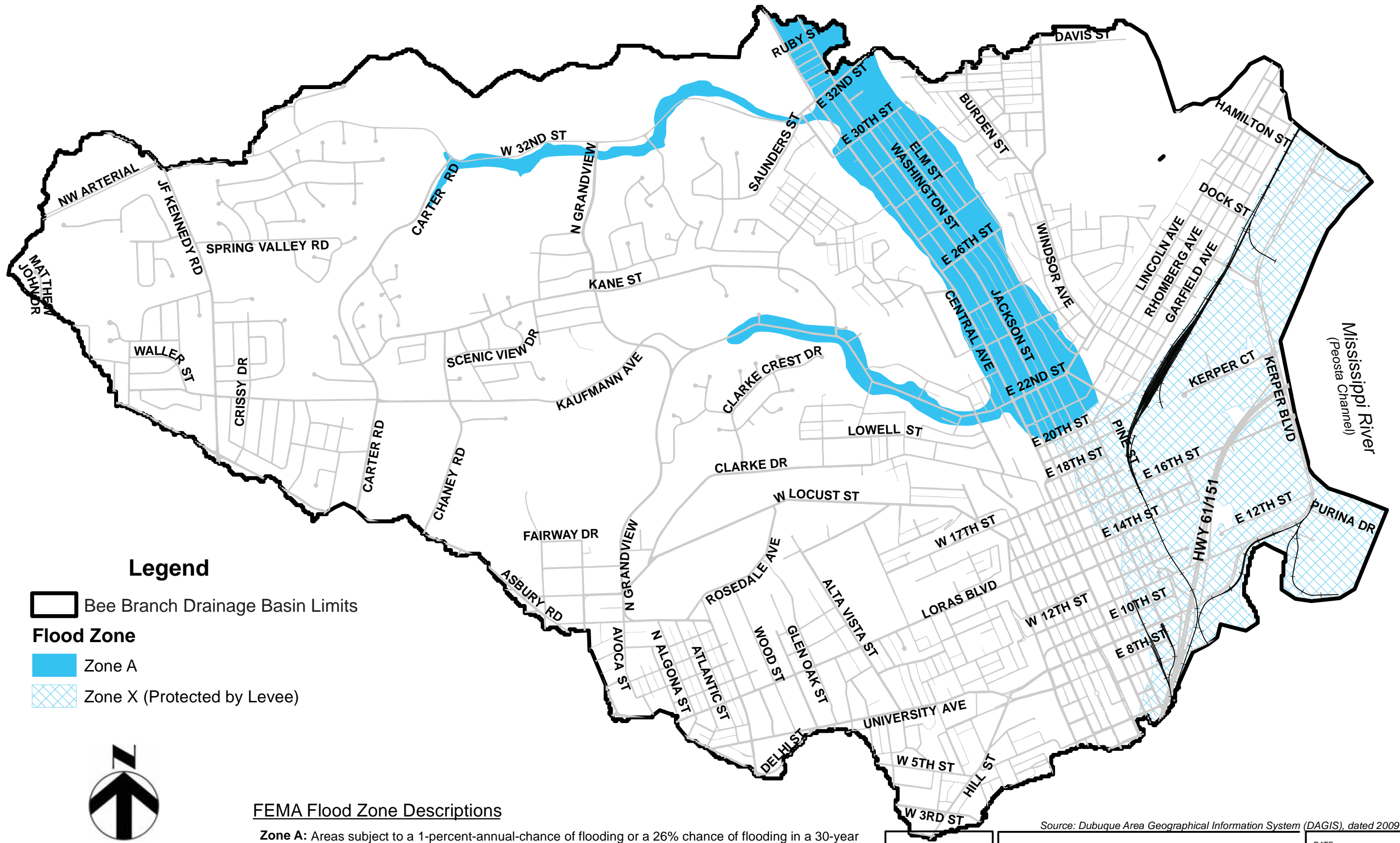
**Bee Branch Drainage Basin
Soil Permeability (USDA NRCS)**






Drainage Basin Master Plan
City of Dubuque, Iowa

DATE	2013
FIGURE	2-2A

F:\PROJECTS\Storm and Sanitary\Storm\Drainage Basin Master Plan\Mapa\Bee Branch Watershed Flood Plain Limits.mxd



Legend

-  Bee Branch Drainage Basin Limits
- Flood Zone**
-  Zone A
-  Zone X (Protected by Levee)




FEMA Flood Zone Descriptions

- Zone A:** Areas subject to a 1-percent-annual-chance of flooding or a 26% chance of flooding in a 30-year period. Because detailed analyses are not performed for such areas; no depths or base flood elevations are provided within these zones.
- Zone X:** Area protected by levees from the 1-percent-annual-chance flood event.



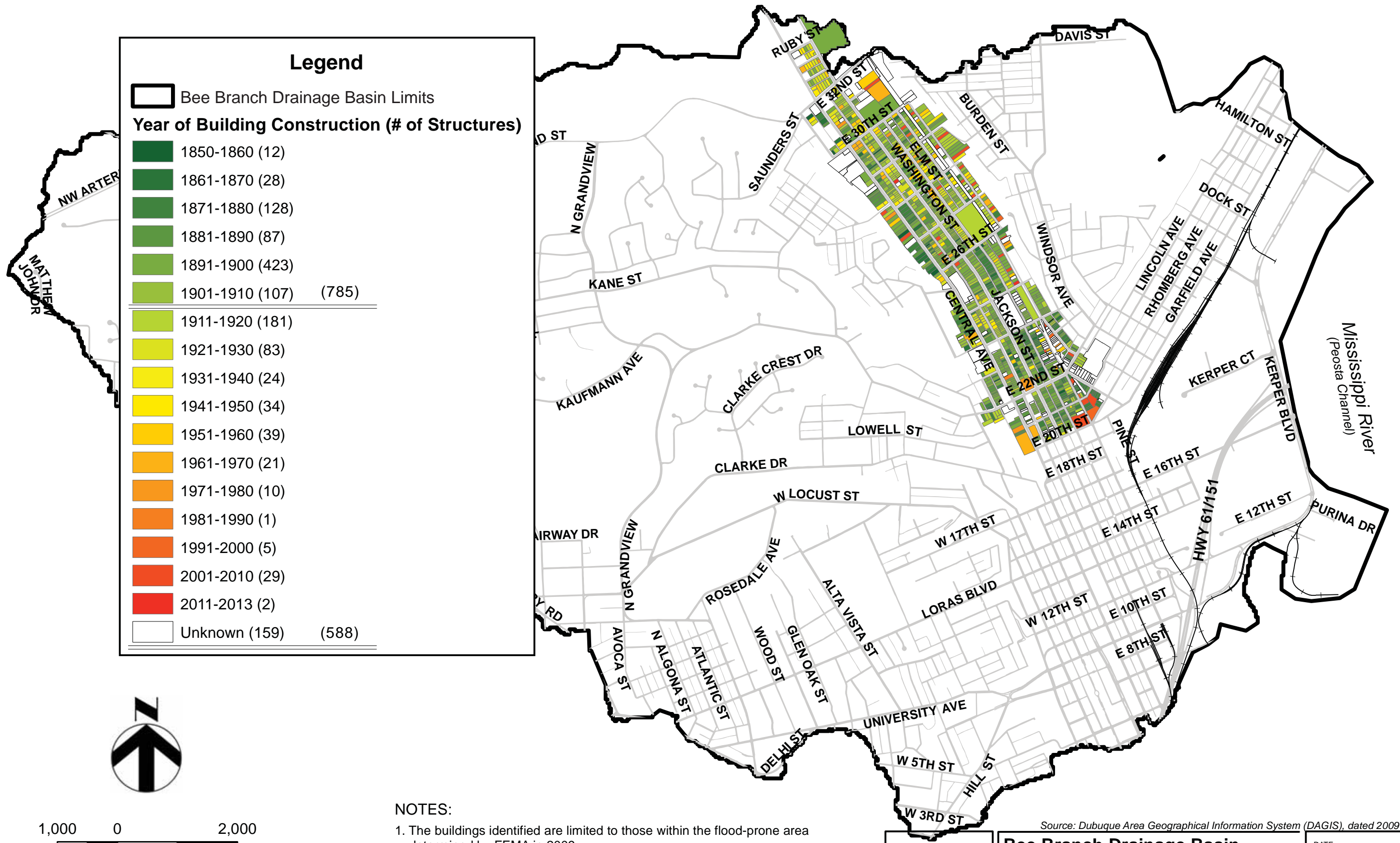
**Bee Branch Drainage Basin
FEMA Floodplain (Proposed 2009)**

 Drainage Basin Master Plan
City of Dubuque, Iowa

Source: Dubuque Area Geographical Information System (DAGIS), dated 2009

DATE	2013
FIGURE	2-3A

F:\PROJECTS\Storm and Sanitary\Storm\Drainage Basin Master Plan\Map\Bee Branch Watershed Flood Plain Properties.mxd



1,000 0 2,000
SCALE IN FEET

NOTES:

1. The buildings identified are limited to those within the flood-prone area determined by FEMA in 2009.
2. Of the 1,373 buildings, 785 (57%) are greater than 100 years old.

HDR

**Bee Branch Drainage Basin
Historic Nature of Buildings in Flood-
Prone Area**

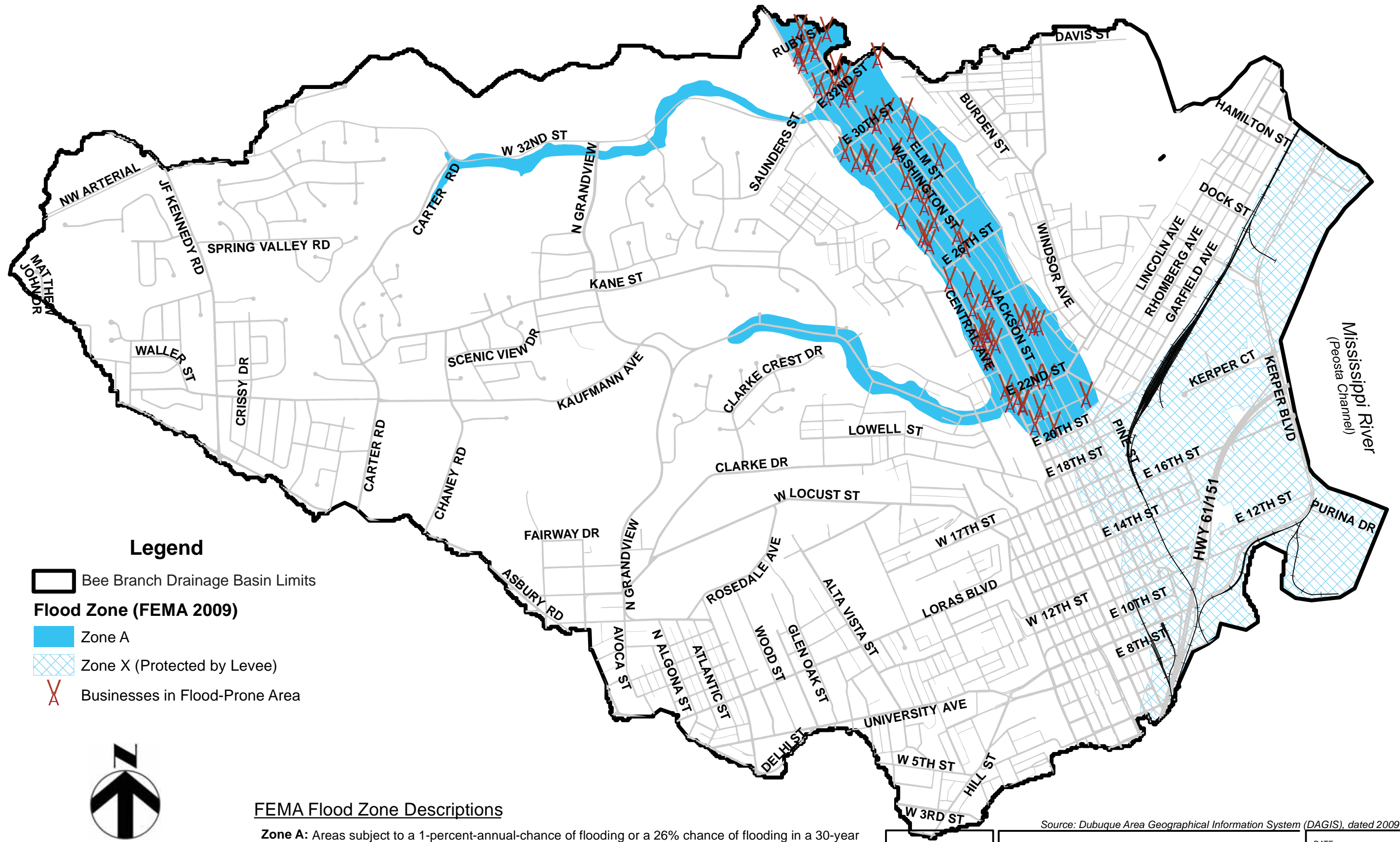
THE CITY OF
DUBUQUE
Masterpiece on the Mississippi

Drainage Basin Master Plan
City of Dubuque, Iowa

Source: Dubuque Area Geographical Information System (DAGIS), dated 2009

DATE	2013
FIGURE	2-4A

F:\PROJECTS\Storm and Sanitary\Storm\Drainage Basin Master Plan\Map\Bee Branch Watershed Flood Plain Businesses.mxd



Legend

- Bee Branch Drainage Basin Limits
- Flood Zone (FEMA 2009)**
- Zone A
- Zone X (Protected by Levee)
- Businesses in Flood-Prone Area



1,000 0 2,000
SCALE IN FEET

FEMA Flood Zone Descriptions

Zone A: Areas subject to a 1-percent-annual-chance of flooding or a 26% chance of flooding in a 30-year period. Because detailed analyses are not performed for such areas; no depths or base flood elevations are provided within these zones.

Zone X: Area protected by levees from the 1-percent-annual-chance flood event.

Source: Dubuque Area Geographical Information System (DAGIS), dated 2009



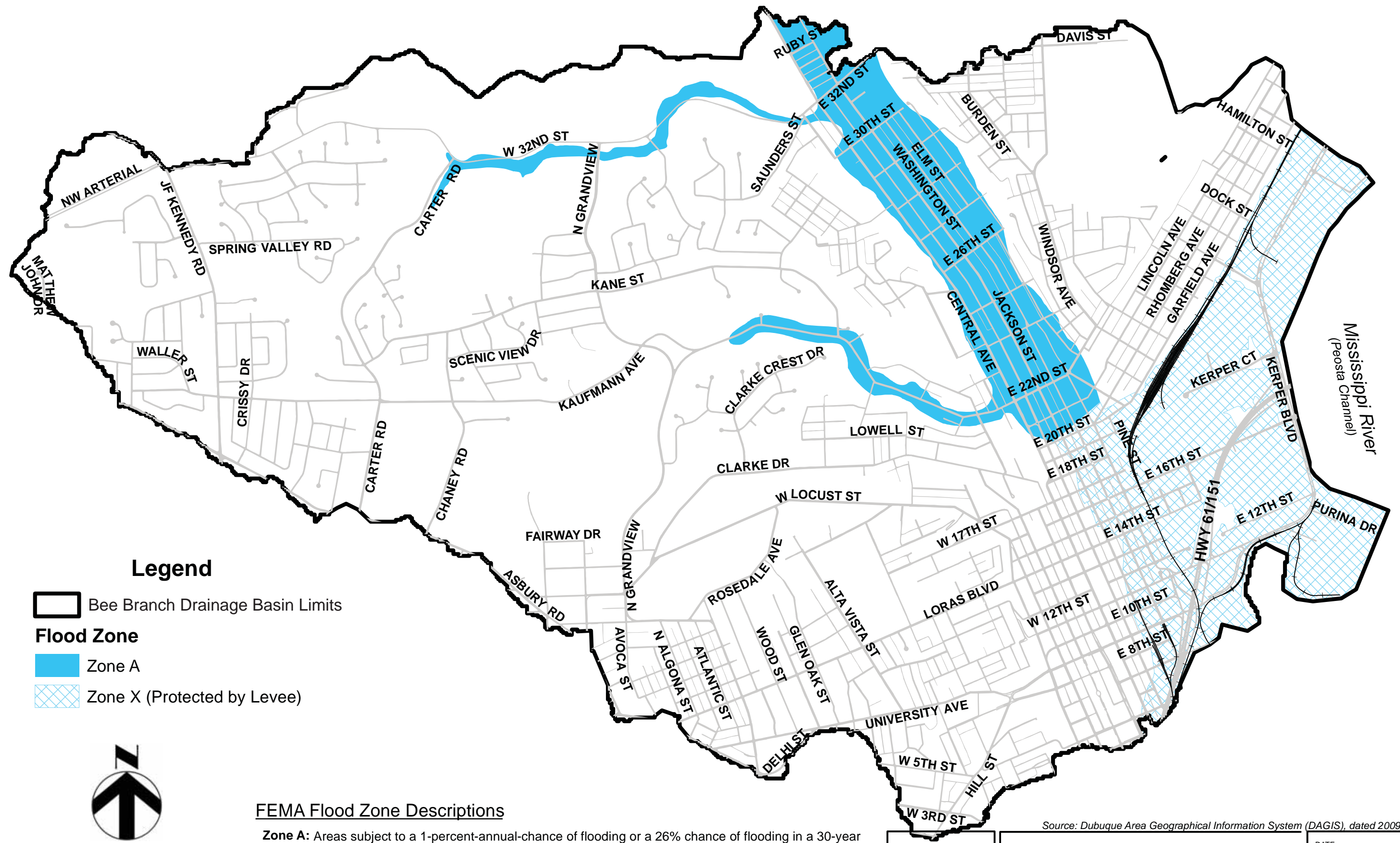
Bee Branch Drainage Basin Businesses in Flood-Prone Area



Drainage Basin Master Plan
City of Dubuque, Iowa

DATE	2013
FIGURE	2-5A

F:\PROJECTS\Storm and Sanitary\Storm\Drainage Basin Master Plan\Map\Bee Branch Watershed Flood Plain Limits.mxd



Legend

 Bee Branch Drainage Basin Limits

Flood Zone

 Zone A

 Zone X (Protected by Levee)



1,000 0 2,000

SCALE IN FEET

FEMA Flood Zone Descriptions

Zone A: Areas subject to a 1-percent-annual-chance of flooding or a 26% chance of flooding in a 30-year period. Because detailed analyses are not performed for such areas; no depths or base flood elevations are provided within these zones.

Zone X: Area protected by levees from the 1-percent-annual-chance flood event.

Source: Dubuque Area Geographical Information System (DAGIS), dated 2009



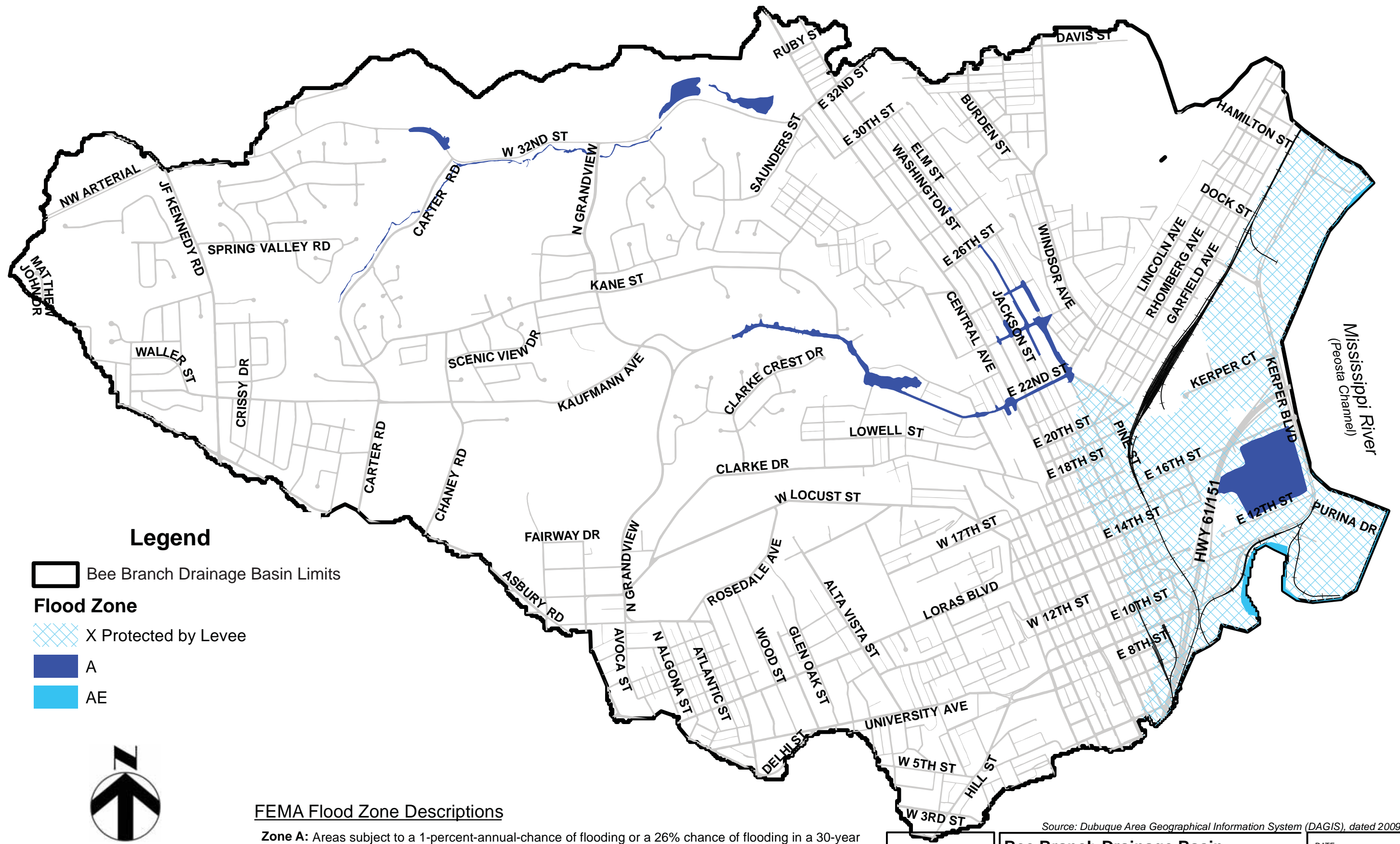
Bee Branch Drainage Basin FEMA Floodplain (Proposed 2009)



Drainage Basin Master Plan
City of Dubuque, Iowa

DATE	2013
FIGURE	2-6A

F:\PROJECTS\Storm and Sanitary\Storm\Drainage\Bee Branch\Master Plan\Map\Bee Branch Watershed Flood Plain Limits - 2012.mxd



Legend

Bee Branch Drainage Basin Limits

Flood Zone

X Protected by Levee

A

AE

FEMA Flood Zone Descriptions

Zone A: Areas subject to a 1-percent-annual-chance of flooding or a 26% chance of flooding in a 30-year period. Because detailed analyses are not performed for such areas, no depths or base flood elevations are provided within these zones.

Zone AE: Areas subject to a 1-percent-annual-chance of flooding or a 26% chance of flooding in a 30-year period. Detailed analyses was performed so that base flood elevations are provided.

Zone X: Area protected by levees from 1-percent-annual-chance of flood event.

Source: Dubuque Area Geographical Information System (DAGIS), dated 2009



Bee Branch Drainage Basin FEMA Floodplain (Effective 10/18/11)



Drainage Basin Master Plan
City of Dubuque, Iowa

DATE

2013

FIGURE

2-7A