

# HUD National Disaster Resilience Competition Grant



**In January 2016, the U.S. Department of Housing and Urban Development (HUD) awarded the City of Dubuque \$31.5 million in disaster resiliency funds for the Bee Branch Healthy Homes Resiliency Program and stormwater infrastructure improvements** including the Bee Branch Creek Railroad Culverts and West Locust Street and Kaufmann Avenue storm sewer projects. The City partnered with the State of Iowa to apply for the federal funds through the National Disaster Resilience Competition (NDRC), which invited communities that experienced natural disasters in 2011, 2012, or 2013 to compete for funds to help them rebuild and increase their resilience to future disasters.

## Bee Branch Healthy Homes Resiliency Program

Many residents in the Bee Branch Watershed have experienced repeated flash flooding from stormwater during heavy rain events. As a result, they are living with residual structural issues, electrical hazards, and chronic mold and mildew problems.

The Bee Branch Healthy Homes (BBHH) Resiliency Program includes \$8.4 million in the form of forgivable loans to improve 320 housing units, including owner-occupied homes, single-unit rentals, and small, multi-family residential units. Funds will be awarded to properties where low-to moderate-income residents reside and used to make repairs and renovations to decrease environmental health and safety issues from flooding.

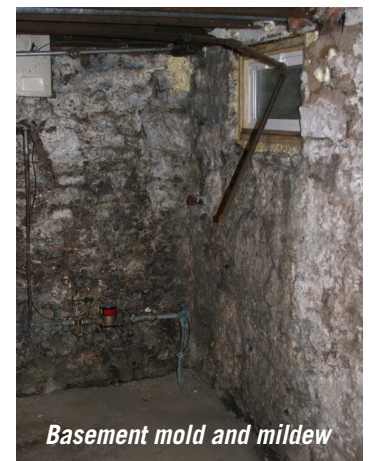
## \$8.4 million

**to assist Bee Branch Watershed residents or property owners in repairing and flood-proofing their homes**

The BBHH Resiliency Program will help Dubuque residents meet unmet structural needs and empower individuals to be part of the creation of more resilient housing through on-site stormwater management principles. A variety of repairs and renovations will improve housing conditions and make homes more resilient to future flooding.

### Examples include:

- Foundation repairs
- Water and sewage services
- Furnace replacement
- Water heater replacement
- Basement window repairs
- Mold and mildew remediation
- Lead paint remediation
- Soil modification
- Sidewalk Improvements
- Sump pump repair
- Property drainage improvements



*Basement mold and mildew*

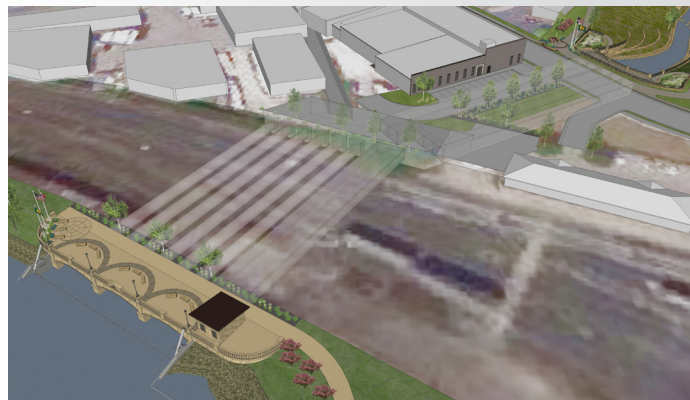
# Stormwater Infrastructure Improvements



## Bee Branch Creek Railroad Culvert Improvement

**\$9 million**

The City received \$9 million to install six 8-foot diameter culverts through the Canadian Pacific railroad right-of-way. These culverts will convey stormwater from the Upper Bee Branch Creek (currently under construction) to the Lower Bee Branch Creek. The total cost for this component of the Bee Branch Project is estimated at \$18 million, with the remaining funds already in the City budget.



## 22nd St./Kaufmann Ave. Storm Sewer Capacity Improvements

**\$11.5 million**

These improvements total \$11.5 million and will increase the capacity of the stormwater management system from Elm Street along 22nd St. to the west and continuing under Kaufmann Ave. to Kane St. by constructing a 10-foot by 6-foot reinforced concrete box culvert with 80 stormwater drains.



## 17th St./W. Locust Street Storm Sewer Capacity Improvements

**\$2.6 million**

These improvements total \$2.6 million and will increase the capacity of the stormwater management systems from the Lower Bee Branch along 17th St. to W. Locust St. and continuing under W. Locust St. to Rosedale Ave. by constructing reinforced concrete box culverts with several high-capacity inlets and approximately 100 standard capacity inlets.



**More**   
**Information**

Learn more about the Bee Branch Watershed Flood Mitigation Project, including the stormwater infrastructure improvements listed above, at [www.cityofdubuque.org/beebranch](http://www.cityofdubuque.org/beebranch). For more information about the Bee Branch Healthy Homes Resiliency Program, visit [www.cityofdubuque.org/bbhh](http://www.cityofdubuque.org/bbhh).