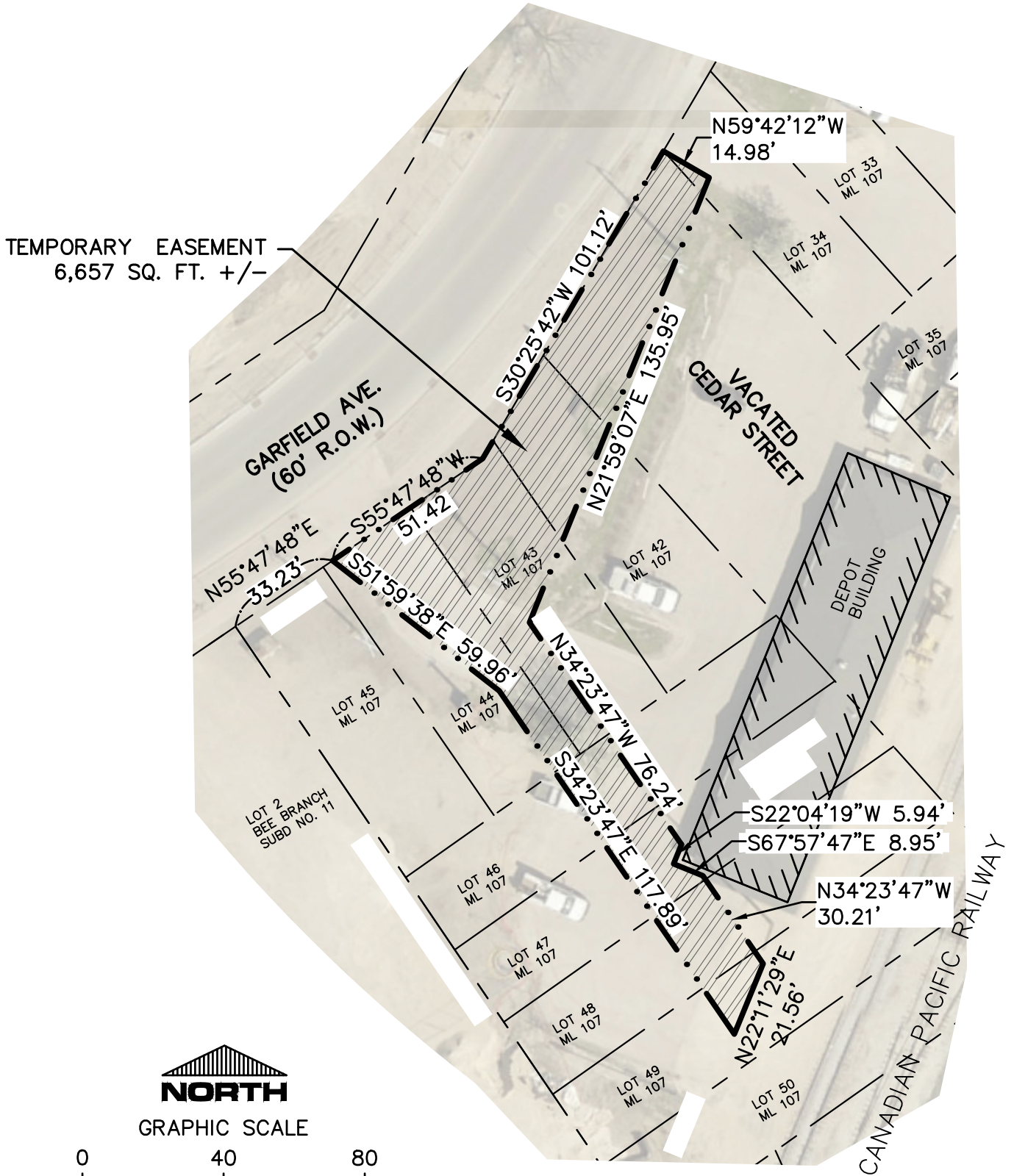


TEMPORARY EASEMENT EXHIBIT C

TEMPORARY EASEMENT ACROSS PART OF VACATED CEDAR STREET, PARTS OF LOTS 34, 42, 43, 44, 46, 47, 48, AND 49 IN MINERAL LOT 107, ALL IN THE CITY OF DUBUQUE, IOWA



DRAWING MAY HAVE BEEN REDUCED

- LEGEND**
- LOT LINE
 - . . - PROPOSED EASEMENT LINE
 - ML MINERAL LOT

NOTE
THIS SURVEY IS SUBJECT TO EASEMENTS, RESERVATIONS, RESTRICTIONS AND RIGHTS-OF-WAY OF RECORD AND NOT OF RECORD.

PROPRIETOR: IOWA, CHICAGO & EASTERN RAILROAD CORP. (DBA CP RAILWAY)
 PREPARED FOR: CITY OF DUBUQUE
 DATE PREPARED: JAN. 24, 2018, REV. 5-30-18

 IIW, P.C. INTEGRITY. EXPERTISE. SOLUTIONS. www.iiwinc.com • 563.556.4401	ARCHITECTURE CIVIL ENGINEERING CONSTRUCTION SERVICES ENVIRONMENTAL ENGINEERING LAND SURVEYING MUNICIPAL ENGINEERING STRUCTURAL ENGINEERING TRANSPORTATION ENGINEERING
	DRAWN JJB PLAT NO. -IA-18 CHECKED SAF PROJ. NO. 06169-02 DATE 5-30-18 SHEET 1 of 1 P:\06\169\169-02\DRAWINGS\SUR\06169 CP-RR EASEMENTS