

# Thomas Place Street Closure

Monday Oct. 7 12:00 PM to Wednesday Oct. 9 8:00 AM



Special Achievement in GIS  
2018 Award Winner

## Legend

### Project Status

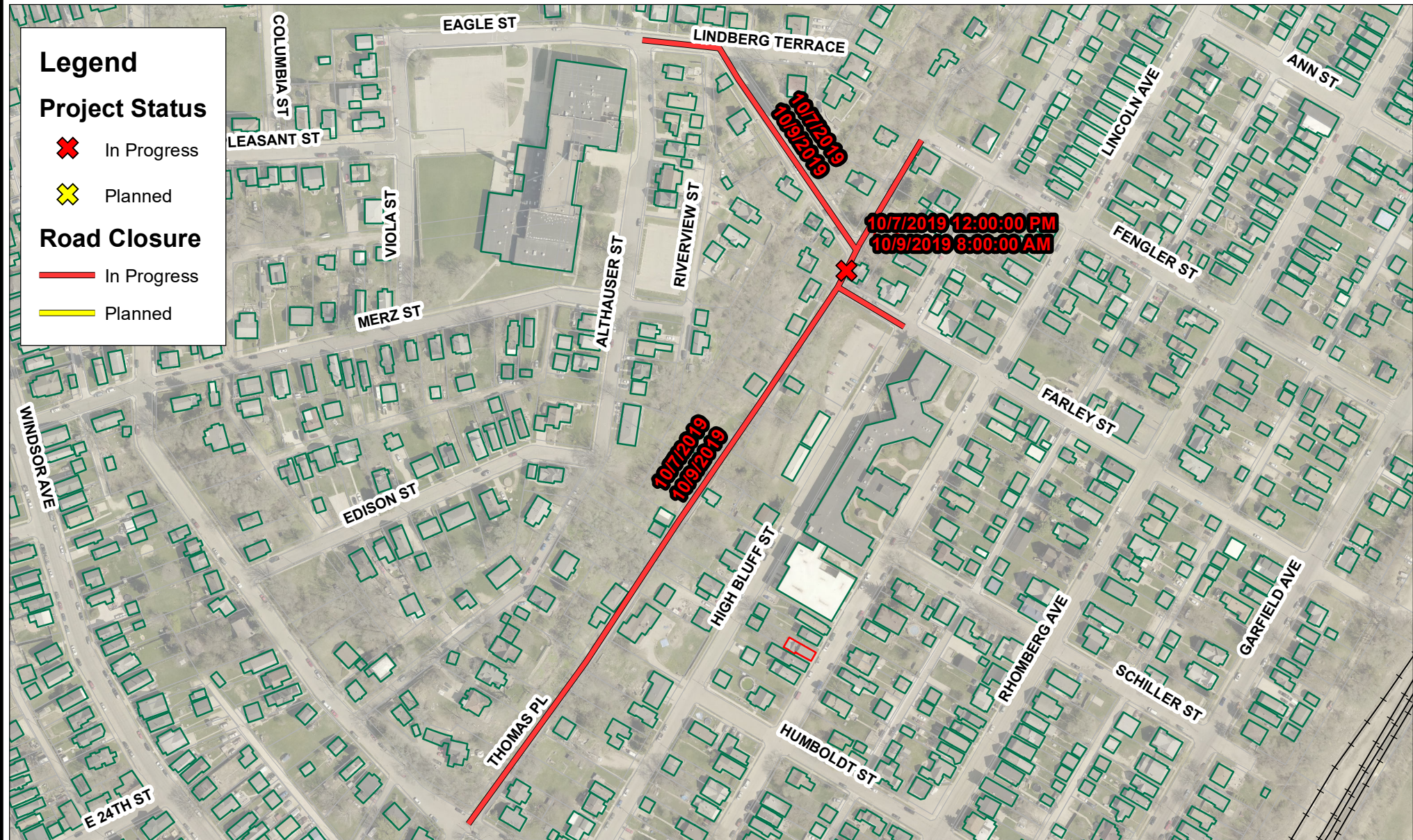
✖ In Progress

✕ Planned

### Road Closure

— In Progress

— Planned



**DISCLAIMER:** This information was compiled using the Dubuque Area Geographic Information System (DAGIS), which includes data created by both the City of Dubuque and Dubuque County. It is understood that, while the City of Dubuque and participating agencies utilized the most current and accurate information available, DAGIS and its suppliers do not warrant the accuracy or currency of the information or data contained herein. The City and participating agencies shall not be held liable for any direct, indirect, incidental, consequential, punitive, or special damages, whether foreseeable or unforeseeable, arising out of the authorized or unauthorized use of this data or the inability to use this data or out of any breach of warranty whatsoever.

1 inch = 250 feet

100 50 0 100 200 300 400 Feet



Map Prepared by:  
City of Dubuque  
Water Department  
1902 Hawthorne St  
563-589-4291