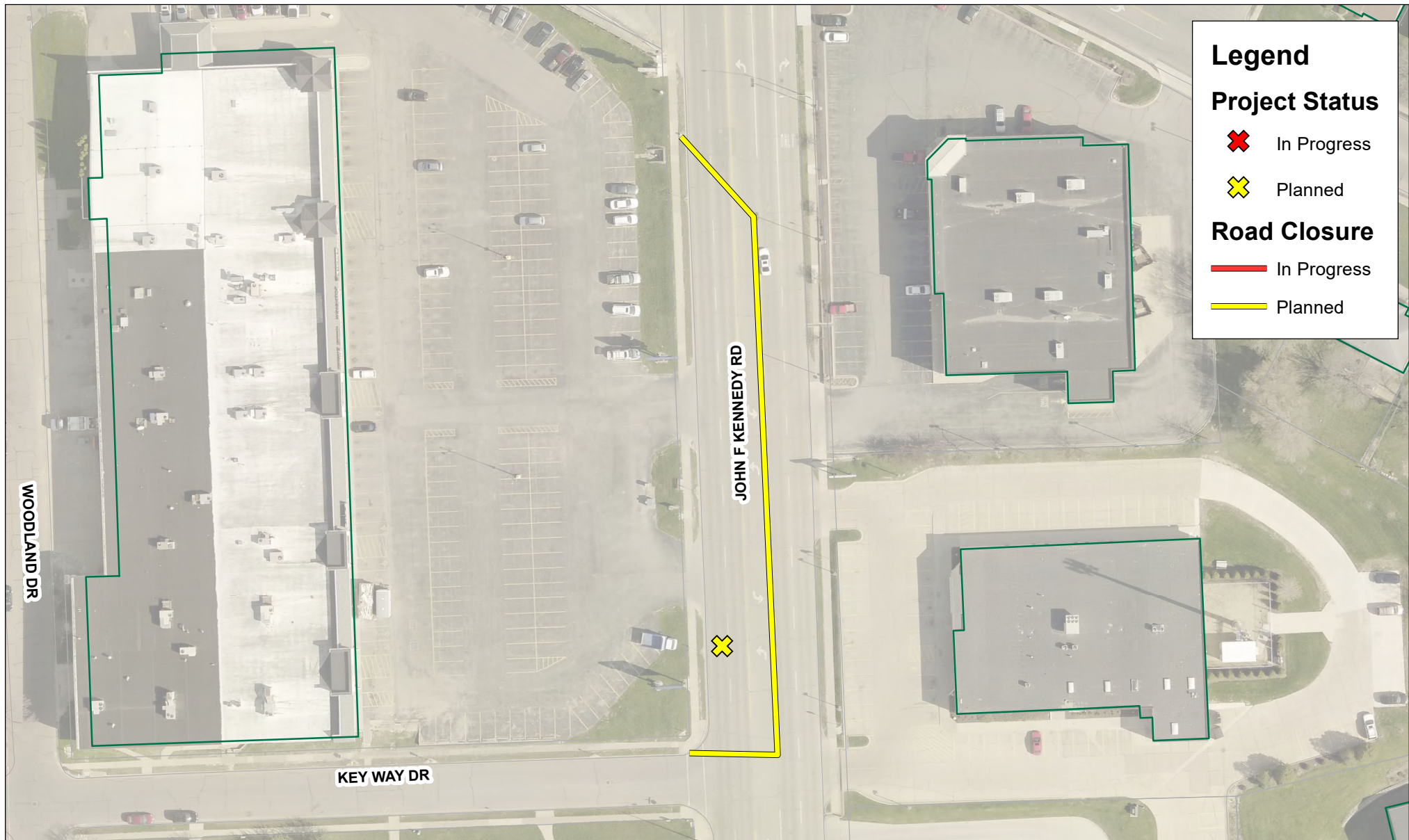


# John F Kennedy Rd Lane Closure

Tuesday Nov. 26 at 5:00 AM to Wednesday Nov. 27 at 5:00 PM

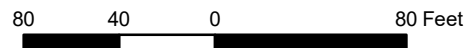


Special Achievement in GIS  
2018 Award Winner



**DISCLAIMER:** This information was compiled using the Dubuque Area Geographic Information System (DAGIS), which includes data created by both the City of Dubuque and Dubuque County. It is understood that, while the City of Dubuque and participating agencies utilized the most current and accurate information available, DAGIS and it's suppliers do not warrant the accuracy or currency of the information or data contained herein. The City and participating agencies shall not be held liable for any direct, indirect, incidental, consequential, punitive, or special damages, whether foreseeable or unforeseeable, arising out of the authorized or unauthorized use of this data or the inability to use this data or out of any breach of warranty whatsoever.

1 inch = 80 feet



Map Prepared by:  
City of Dubuque  
Water Department  
1902 Hawthorne St  
563-589-4291