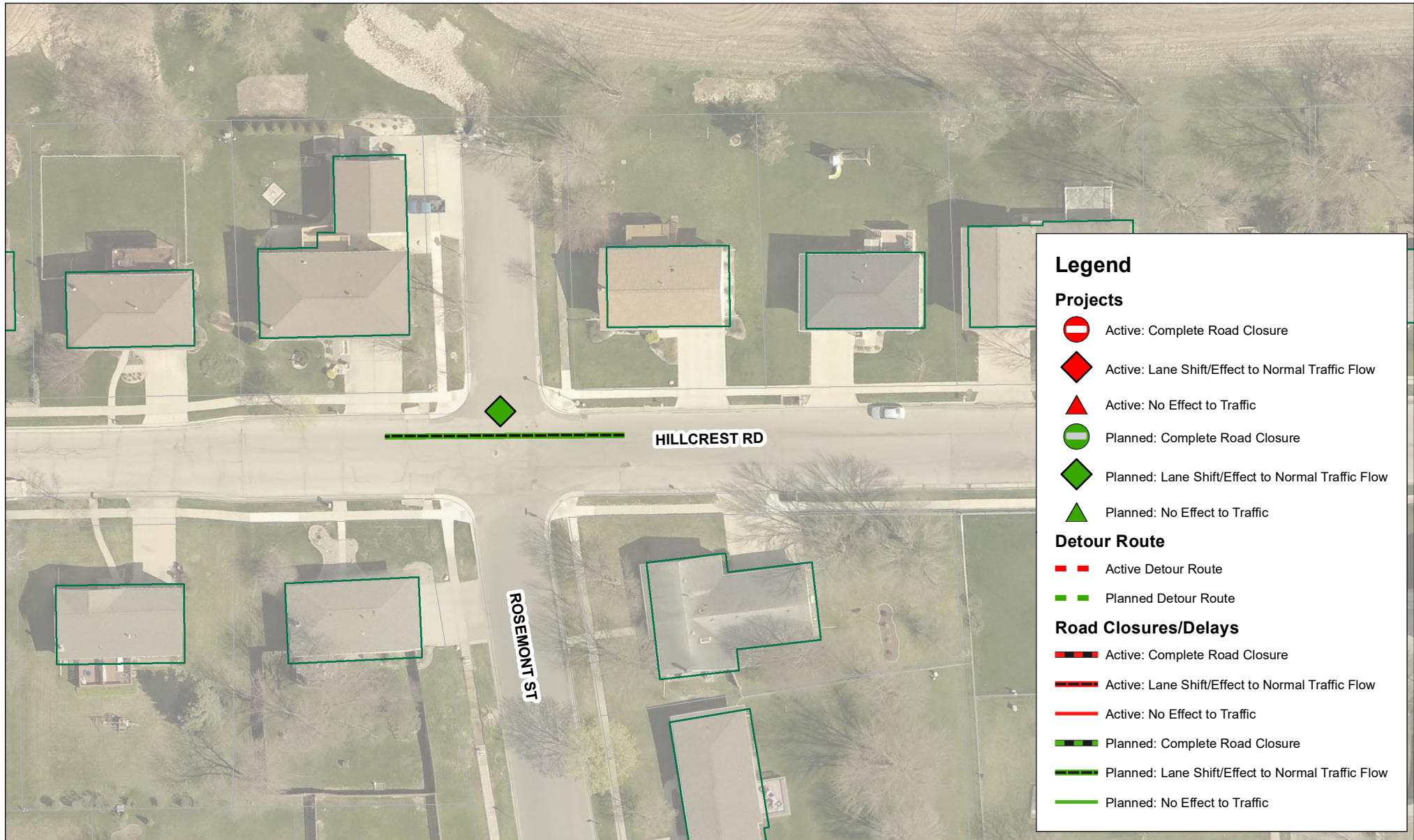


# Lane Closure on Hillcrest Rd at Rosemont St



Special Achievement in GIS  
2018 Award Winner

Tuesday September 8 at 7:00 AM to Wednesday September 9 at 5:00 PM



## Legend

### Projects



Active: Complete Road Closure



Active: Lane Shift/Effect to Normal Traffic Flow



Active: No Effect to Traffic



Planned: Complete Road Closure



Planned: Lane Shift/Effect to Normal Traffic Flow



Planned: No Effect to Traffic

### Detour Route



Active Detour Route



Planned Detour Route

### Road Closures/Delays



Active: Complete Road Closure



Active: Lane Shift/Effect to Normal Traffic Flow



Active: No Effect to Traffic



Planned: Complete Road Closure



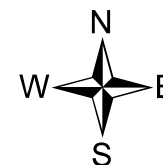
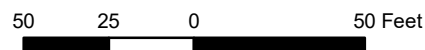
Planned: Lane Shift/Effect to Normal Traffic Flow



Planned: No Effect to Traffic

**DISCLAIMER:** This information was compiled using the Dubuque Area Geographic Information System (DAGIS), which includes data created by both the City of Dubuque and Dubuque County. It is understood that, while the City of Dubuque and participating agencies utilized the most current and accurate information available, DAGIS and it's suppliers do not warrant the accuracy or currency of the information or data contained herein. The City and participating agencies shall not be held liable for any direct, indirect, incidental, consequential, punitive, or special damages, whether foreseeable or unforeseeable, arising out of the authorized or unauthorized use of this data or the inability to use this data or out of any breach of warranty whatsoever.

1 inch = 56 feet



Map Prepared by:  
City of Dubuque  
Water Department  
1902 Hawthorne St  
563-589-4291