

Snow & Ice Control

Standard Operating Manual

PUBLIC WORKS DEPARTMENT
CITY OF DUBUQUE
925 KERPER CT

NOVEMBER 1,
2022

Revision History

Created: 11-01-2022

Document Revision	Date	Summary of Changes
REV 22.0000	11-01-2022	<ul style="list-style-type: none">• Document Created• Routes updated<ul style="list-style-type: none">◦ 4, 10, 12• Expanded Additional Information<ul style="list-style-type: none">◦ driveways, private property, mailboxes, damages

TABLE OF CONTENTS

Officials in Charge	4
Introduction	5
General Overview	6
Data & Documentation	7
Forecasts & Notifications	8
Crew Preparation	9
Annual Training	10
Plow & Salt Operations	11
Removal & Storage	12
Odd/Even Restrictions	13
Additional Operations	14
Condition Examples	15
Resources: Materials	16
Recommended Spread Rates	17
Resources: Equipment	18
Additional Equipment	19
Resources: Employees	20
Additional Information	21
APPENDIX	
Anti-Icing Routes	25
General Routes	27
Walks & Steps	42
Bridges & Overpasses	44
Removal Areas	45
Ice Accumulation Routes	46



OFFICIALS IN CHARGE



**JOHN
KLOSTERMANN**

Director

jkloster@cityofdubuque.org



**ARIELLE
SWIFT**

Asst. Director

aswift@cityofdubuque.org



**PAUL
DAVIS**

Field Supervisor

pdavis@cityofdubuque.org

AS APPOINTED



Jake Jansen
Resource Mgmt
Supervisor



Ken Miller
DMASWA
Administrator



Tom Kuhle
Fleet Maint.
Supervisor

INTRODUCTION

The control of accumulations of snow and ice on the public ways of the City of Dubuque is the responsibility of the Public Works Department.

Snow and ice control operations are classified as emergency work and is accomplished as efficiently and expeditiously as possible with the resources available to City government. A combination of many factors overlay to make each snowfall and the effects of each such snowfall unique. Consequently, the snow and ice control plan for the City must be flexible enough to cope with and respond to varying conditions during and after each winter storm.

The snow and ice control program as set forth on the following pages reflects constant changes in methods of operations, plow and deicer routes, streets, equipment, and other facets of the program. Equipment and personnel noted by this program may be supplemented with equipment and personnel from other departments or hired from the private sector.

The snow and ice control program specifies that all improved streets within Dubuque's city limits will be plowed and receive applications of salt, salt brine, blended liquid deicer, crushed limestone, sand, and/or non-corrosive deicer, when necessary, before, during and after a winter snow or ice storm. Improved streets mean all publicly owned streets with a hard surface, regardless of type. Alleys are not included in the program, except for those in the downtown business district and those few hard-surfaced alleys that serve as sole access to a residence (as authorized by City Manager).

Because of the high cost associated with removal operations, large snow accumulations will be removed only, when necessary, from improved streets, alleys and municipal parking lots in the downtown district, millwork district, and the Port of Dubuque.

Snow accumulations may also be removed from heavily traveled arterial streets as time and budget constraints permit. Any removal operations performed on arterial streets are for the purpose of facilitating the safe and proper flow of vehicular traffic only.

Every April, the Public Works Department will evaluate its remnant salt supply. If additional salt is determined to be needed, the Public Works Department will solicit bid proposals for snow and ice control road deicer salt in May or June for the following winter season. Salt will be purchased by the barge load, unloaded at the City of Dubuque's Purina Drive barge terminal by November 15th, and placed in the salt storage fabric building on site until removed by the City of Dubuque. Off season direct purchases from a company already storing salt in Dubuque is sometimes an option. In that case, the salt is then purchased and moved to the City's storage facility in April of each year.

GENERAL OVERVIEW

During a winter storm, fifteen (15) City plow/spreader trucks will be dispatched when necessary to plow and treat Dubuque's streets. Each truck is assigned to one of fifteen (15) zones or routes into which the City is partitioned. * If snowfall accumulations are in excess of six (6) inches, motor graders and plow-equipped wheel loaders may be dispatched to assist with plowing operations. Contingent upon pavement conditions at the time of deployment, these plows will be assigned to one of the heavy plow routes. The current budget provides that all improved streets are to be cleared for vehicular travel within forty-eight (48) hours of the cessation of a winter storm.

Each zone has three subcategories:

- Primary = Arterials
- Secondary = Collectors
- Tertiary = Residentials

During operations, primary streets are plowed and treated continuously until they are cleared for safe vehicular traffic. Once the primary streets are open, secondary streets are plowed and treated until open. Finally, Residential streets within each zone are plowed and treated. Depending on the type of precipitation, streets with steep grades are treated, or plowed, in conjunction with primary and/or secondary routes, as deemed necessary by the operator during the storm.

After all streets have been cleared for vehicular travel, alleys in the downtown and millwork districts shall be plowed and treated. Major accumulations of ice and snow may be removed if budget and time constraints permit.



DEPENDING ON
SEVERITY OF
WEATHER,
RESPONSE TIME
FOR RESIDENTIALS,
OR TERTIARY
ZONES, CAN BE UP
TO 48 HOURS OR
MORE

DATA & DOCUMENTATION

Storm data can be accessed when needed from the National Weather Service. The Public Works Department also keeps a log of storms. This winter storm log is kept on the City of Dubuque network: F>users>Public Works>Municipal Center>Snow>Annual Winter Storm Reports

Public Works Department Records include the following data points:

- Date
- Time Crews Dispatched
- Personnel and Hours Works
- Equipment Used
- Materials Used
- Time Crews Finish

Electronic maps, using geographic information systems, display the following information:

- Plow/Spreader Truck Zones
- Primary Plow/Spreader Truck Routes
- Plow/Spreader Pickup Truck Routes

These maps are revised each year to reflect new streets, special assignments and/or general restructuring of zones or routes. These maps are maintained by the GIS Division within the Public Information Office.



FORECASTS & NOTIFICATIONS

Due to the need for twenty-four (24) hour monitoring, A private meteorological firm shall be retained annually to supplement the forecasts received from the National Weather Service Office in Davenport, Iowa. At present, DTN is the contracted private firm for the City of Dubuque. Providing forecasts each day, seven (7) days a week, with additional updates when warranted, these forecasts are received through Weather Sentry Online Pavement Forecast Transportation Edition. The Weather Sentry Online Pavement Forecast Transportation Edition is a web site hosted and maintained by the contracted vendor. The forecasting service provides alerts to desktop or mobile devices, online weather briefing, pavement temperature and treatment recommendations. This web-based service is made available to all Public Works personnel with an available internet connection.

Throughout the storm, teams continually review forecasts and review street cameras to determine coverage amounts prior to deployment of operators. Typically mobilization of the snow and ice control response team occurs as soon as precipitation begins to cover pavements.

The Field Supervisor utilizes the annual route sheet to call in operators when necessary.

THE PUBLIC WORKS
FIELD SUPERVISOR
REVIEWS UPDATED
FORECASTS TO
DETERMINE
MOBILIZATION OF THE
SNOW AND ICE
CONTROL RESPONSE
TEAM.

CREW PREPARATION

Winter operation internal call list shall be completed and distributed no later than November 1st each year. The list will specify:

1. Names of snow and ice control personnel
2. Contact Information for personnel
3. Routes/Zones personnel are assigned
4. 12-HR shift personnel are assigned
5. Salt operation Handling Contact Information

Winter operations' external call list will be completed and distributed no later than November 20th each year. The list will specify:

1. Names of heavy-equipment private sector contractors
2. Contact information for private contractors
3. Available equipment
4. Equipment prices per hour
5. Any additional items the director will need to make as an informed decision as possible, during heavy snow and ice control operations.

All city snow and ice personnel will undergo annual orientation and training no later than November 15th each year. Prior to the first anticipated snow fall, or no later than November 12th each year, all appropriate trucks, heavy equipment, and machinery will be ready for snow and ice operations.

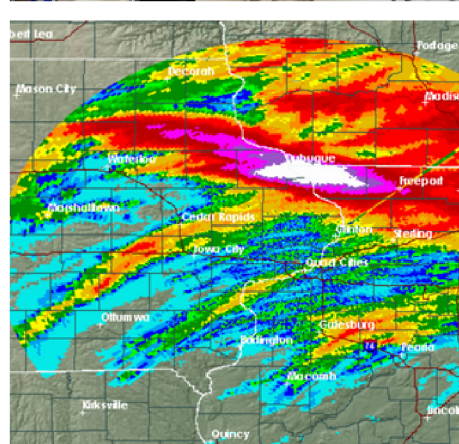


ANNUAL TRAINING

In November of each year, all employees of the Public Works Department shall be briefed on the operations of the Snow and Ice Control Program. Discussions shall concern the operations as designed, assignments of operators for all equipment, and revisions made to the previous year's program. Training of new employees will be done at this time. All employees will be trained in the operation of any new equipment. Dry practice runs will be done by all employees on their assigned routes. A hands-on obstacle course to train for winter operations was added to annual training in 2021.

SAMPLE TRAINING TOPICS:

- OSHA top 10 safety hazards
- Simulation training
- On-Site obstacle course
- Route dry runs
- Application rates
- Annual seasonal forecast review
- Driver seat debrief with tech company on-site
- Paperwork procedure review
- Table talk session on operational program updates
- Anti-icing (blending system)



PLOW & SALT OPERATIONS

From approximately November 15th through April 1st, thirty (30) Public Works Department personnel are assigned as plow/spreader truck operators. Shift start and end dates are subject to change each year. The Public Works Director will authorize the start and end of each shift each season. These operators are assigned to either the 4:00 AM to 12:00 noon or 12:00 PM to 8:00 PM work shifts. The 4:00 AM to 12:00 PM operators are responsible for operating the trucks during the AM hours between midnight and noon during the winter months. The 12:00 PM to 8:00 PM operators are responsible for the PM hours between noon and midnight.

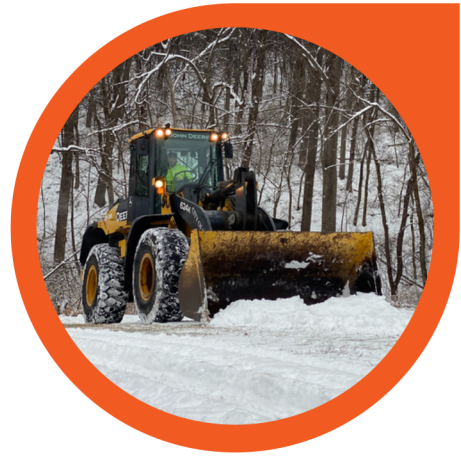
At the inception of a winter storm, the fifteen (15) plow/spreader truck operators are dispatched onto their zones/routes. During normal work hours, this decision is made by the Public Works Director, Assistant Director, or authorized supervisors. During the night and on holidays and weekends, the Public Works Director, Assistant Director, or authorized supervisors receive input from the Police Department to aid in determining when operators are dispatched.

The Public Works Director, Assistant Director, or as-designated-supervisors determine what types of materials will be spread on Dubuque's streets. Their decision is based on variables such as air temperature, pavement temperature, type of precipitation, wind, and forecasted post-storm air temperatures. Due to extremely cold pavement temperatures or other uncontrollable weather conditions, ice or snow may remain on driving surfaces after all operations have ended. Also, any new concrete streets judged as susceptible to damage from deicers may receive limited deicer treatments or be treated with a liquid low-corrosive deicer or abrasive materials. These streets will be noted on their respective routes. Usage of limited deicers or abrasives may result in snow- and ice-covered driving surfaces on the new concrete streets, even after normal operations have ended.

If snowfall accumulations are more than six (6) inches on street surfaces, motor graders and plow equipped Endloaders are usually dispatched to assist with plowing operations. If needed, these plows will first help clear the primary and secondary streets. After those streets are open for vehicular traffic, the plows will then be dispatched to clear the streets listed on the fifteen (15) general plow routes.



REMOVAL & STORAGE



Due to the high costs associated with removal operations, snow accumulations will be removed only when necessary, from streets, alleys and municipal parking lots in the downtown district, millwork district, and the Port of Dubuque. Snow accumulations may also be removed from high traffic arterial streets, as time and budget constraints permit. Any removal operations performed on arterial streets are for the sole purpose of facilitating the safe and proper flow of vehicular traffic.

Snow removal operations in the downtown district shall generally be performed at night in order to avoid heavy traffic and congested parking. Snow removal operations on arterial streets shall generally be performed during the day in order to accommodate the residents on those streets. Rotary snow blowers, wheel loaders, motor graders, backhoe-loaders, and dump trucks shall be used for such operations. Private equipment and operators may be hired to assist in such operations, but only when deemed necessary.

When necessary, snow will be removed from cul-de-sacs and ice accumulations from streets to facilitate future snow plowing operations. Snow may also be removed from any residential street, with the City Manager's approval, for the sole purpose of facilitating the safe and proper flow of emergency and other vehicular traffic.

Snow hauled from municipal parking lots, parking ramps, downtown alleys, and streets by City and contractor crews will first use the following areas for snow storage first:

- Terminal Street | city owned property – Snow removal principally from the City's Port of Dubuque areas, downtown streets, alleys, and parking ramp removal.
- Miller Riverview Park – downtown streets, alleys, and parking ramp removal
- W 32nd Street | park property – Old Ski Hill East of Carter Road
- Former Bowling and Beyond Parking Lots

Once the above areas are filled, snow will be hauled to the following locations:

- Dodge and Locust – IDOT property (permission is necessary from IDOT)
- Other city-owned property as approved by the City Manager

Once the above areas are full, it would be necessary to negotiate with private property owners for snow storage space.

ODD/EVEN RESTRICTIONS

To facilitate snow plowing and removal operations in the downtown area, Section 9-14-321.627 of the Code of Ordinances provides for alternate-side street parking on most downtown streets. This section also authorizes ticketing and/or towing and impoundment of vehicles parked in violation of this restriction. Section 9-14-321.682 provides for odd/even parking on the following streets and posted snow routes during designated times.

Section 9-14-321-681 of the Code of Ordinances prohibits the parking of vehicles on any designated streets in the City if such parking interferes with the plowing or removal of snow or ice when a snow emergency has been declared. Section 9-14-321.685 of the Code of Ordinances authorizes the towing and impoundment of vehicles parked in violation of any proclaimed snow emergency.



Sections 9-15-321.770, 9-15-321.771, and 9-15-321.772 of the Code of Ordinances set forth the towing and storage procedures for impounded vehicles. Section 9-14-321-621 of the Code of Ordinances provides a schedule of fines for the parking of vehicles that interfere with snow or ice removal activities.



ADDITIONAL OPERATIONS



BUS STOPS

The Public Works Department will remove snow from all bus stops within 48 hours when requested by Transportation Director, as operations allow.

CATCH BASINS

Stormwater catch basins located along arterial streets and/or in key drainage areas will be opened within a reasonable time following snowfall if temperatures over 32 degrees Fahrenheit are expected soon thereafter. Timing will depend to a great extent upon short-range weather forecasts.

MEDIAN CROSSOVERS

After all streets have been cleared for vehicular travel, median crossovers between the traffic islands on Grandview Avenue and Kerper Boulevard will then be plowed and treated. Major accumulations of ice and snow may be removed to provide adequate visibility for vehicular traffic when deemed necessary.

FACILITIES

The Public Works Department is also responsible for the control and removal of ice and snow accumulations from some City-owned walks, steps, traffic islands, pedestrian overpasses, and municipal parking lots. The current budget provides that identified pedestrian and parking facilities, including accessible parking stalls, will be cleared within seventy-two (72) hours of the cessation of a winter storm. At present, a private contractor is hired to complete snow and ice control for parking lots. The private contractor provides plowing services and is required to deice each lot after snow plowing is complete.

After snow removal is completed in the downtown district, millwork district, and Port of Dubuque areas, the Public Works Department may remove snow from the parking lot located at the Mystique Ice Arena, as needed. On game days, plowing and deicing operations will be completed by 5:00 PM on the three other parking lots located in various areas along Admiral Sheehy Drive by Leisure Services.

The Public Works Department is responsible for clearing accessible parking stalls at various public facilities.

CONDITION EXAMPLES

PLOWED, UNTREATED



UNPLOWED, UNTREATED



**PLOWED, TREATED
WITH SNOWPACK**



PLOWED, TREATED

**Pavement condition examples
drivers may encounter
throughout winter storm events**

RESOURCES: MATERIALS



DEICING OPERATIONS

Deicing is the snow and ice control practice of breaking down the bond between snow and ice precipitation and street pavement through the application of salt. To minimize frayed application, equipment is configured to spray salt at the spinner. This ensures the applied salt remains on the driving lanes.

SALT

Prior to an anticipated storm, Kerper salt barn is filled from the long-term salt storage facility at Purina Terminal. The Kerper salt barn can hold enough salt inventory necessary for two average storms.

ANTI-ICING OPERATIONS

Anti-icing is the snow and ice control practice of preventing the bonding of the initial snow and ice precipitation to street pavement through the timely, pre-storm application of a chemical freezing-point depressant. When the Field Supervisor determines conditions are favorable, the following options are sprayed on the designated routes.

SALT BRINE

Salt brine anti-icing is typically not effective for storms with rain mixed in, or when road temperatures are lower than 15 degrees Fahrenheit at the time the storm hits.

BRINE MIX

When conditions are not favorable for salt brine, crews may be able to utilize a salt brine mix of 90/10 which increases effectiveness when road temperatures are lower than 15 degrees fahrenheit at the time the storm hits.



RECOMMENDED SPREAD RATES

Roadway Description	Pavement Temp	Action if Temp Rising	Action if Temp Falling
Dry to generally wet	30+	N/A	50-100 lbs/lbm
Slushy to Snow Covered	25-32	50-100 lbs/lbm	100-150 lbs/lbm
Snow Covered perhaps wheel tracks	20-25	100-150 lbs/lbm	150-200 lbs/lbm
Snow covered with possible snow pack	15-20	150-200 lbs/lbm	200-300 lbs/lbm
Slippery and ice like	15-20	200-300 lbs/lbm	250-300 lbs/lbm
Icy covered	<15	350-400 lbs/lbm	400 lbs/lbm

RESOURCES: EQUIPMENT



In addition to the fifteen (15) vehicles that embark every storm, when snow accumulation is forecasted to exceed six (6) inches, additional intradepartmental snow-equipped equipment may be sent out to assist with the storm. The Field Supervisor will determine if additional equipment deployment is necessary.

When snow accumulation is forecasted to exceed eight (8) inches, or when other conditions warrant, the City Manager may order that all interdepartmental snow-equipped equipment and designated personnel report to the Public Works Department for plow route assignments.

This auxiliary plow fleet will be assigned to residential street plowing with the sole purpose of providing access to residential areas during major winter storms. Each department providing a supplemental snowplow vehicle will also provide an operator for an initial twelve (12) hour shift and have a second operator available if a second shift is necessary. By November 15th of each year, departments equipped with snowplow units are required to provide the Public Works Department with a description of each unit and its two operators. The Snow and Ice Control Manual will be updated annually to reflect any changes. Auxiliary plow operators will attend an annual snowplow training event conducted by the Public Works Department.

When a snow accumulation is forecasted to exceed eight (8) inches, or when other conditions warrant, the Public Works Director consults with the City Manager to decide whether to hire private contractor fleets, for plowing or removal.

ADDITIONAL EQUIPMENT

Equipment No.	Type	Peripherals
3226	Motorgrader	12' blade
3209	Wheel Loader	12' plow w/gate
3235	Wheel Loader	12' plow w/gate
3244	Wheel Loader	12' plow w/gate
3250	Wheel Loader	12' plow w/gate
3255	Wheel Loader	12' plow w/gate
3201	31K GVW Dump	10' plow, spreader, liquid anti-icing unit
3203	31K GVW Dump	10' plow, spreader, liquid anti-icing unit
3205	31K GVW Dump	10' plow, spreader
3231	31K GVW Dump	10' plow, spreader
3101	3/4 Ton 4WD Pickup	8' plow

If snowfall accumulations are more than six (6) inches on street surfaces, motor graders and plow equipped wheel loaders are usually dispatched to assist with plowing operations. If needed, these plows will first help clear the primary and secondary streets. After those streets are open for vehicular traffic, the plows will then be dispatched to clear the streets listed on the fifteen (15) general plow routes.



RESOURCES: EMPLOYEES

EQ NO.	RT	AREA DESCRIPTION	AM - SHIFT		PM - SHIFT	
3206	01	Bryant Area	Darren	Steil	Dan	Sisler
3241	02	Hill Area	Jeff	Leibold	Gary	Valentine
3233	03	West Side	Al	Sabers	Tim	Lawler
3216	04	Northwest Area	Aaron	Lincoln	Mitch	Hammel
3242	05	Point Area	Jeff	Davis, Jr	Jason	McCann
3212	06	Downtown	Dave	Lindecker	John	Kirk
3208	07	Central/West	Nate	McLaughlin	Drew	Noel
4004	08	Flora Park Area	Matt	Cooper	Matt	Herman
3223	09	Penn/Cedar Cross	Paul	Dement	Tonner	Clewell
3207	10	JFK/32nd Area	Brian	Heim	Brian	Wulfekuhle
3204	11	Jackson/North Area	Dave	Schaul	Chris	Kennedy
3245	12	Fremont Area	Jake	Fruend	Zach	Thill
3222	13	NW Arterial/Central	Ryan	Zierdan	Willie	Campbell
3252	14	Narrow North Area	Dave	Healey	Jordan	Lamey
3246	15	Narrow South Area	Jerrod	Pusateri	Justin	Steckel
Shift Leads			Nick	Wilson	Brian	Lochner

ADDITIONAL INFORMATION

WINTER EMERGENCY

The Public Works Director shall advise the City Manager whenever non-emergency travel is to be discouraged. The City Manager is authorized to publicly announce such road conditions (Section 9-14-321.683)

DEPARTURE FROM POLICY

The City of Dubuque, Iowa recognizes that winter conditions vary from year to year and from storm to storm. Consequently, when conditions warrant, the Public Works Director may order a departure from the snow and ice control and removal policies as stated in this manual to adjust to existing conditions. Such a departure shall be done only, except in the case of an emergency, after authorization by the City Manager. Any such deviation from the general policy will be appropriately recorded.

AGREEMENTS

A 28E agreement exists between Dubuque County, Iowa and the City of Dubuque, Iowa in accordance with the provisions of Iowa Code Section 28E (1998). The purpose of this agreement is to define the duties and responsibilities of Dubuque County and the City of Dubuque for snow and ice control on roads within the jurisdiction of both public agencies.

A 28E agreement also exists between the City of Asbury, Iowa and the City of Dubuque, Iowa in accordance with the provisions of Iowa Code Section 28E (1998). The purpose of this agreement is to define the duties and responsibilities of the City of Asbury and the City of Dubuque for snow and ice control on roads within the jurisdiction of both public agencies.

A separate agreement exists between Dubuque County, Iowa and the City of Dubuque, Iowa. The purpose of this agreement is to define the duties and responsibilities of Dubuque County and the City of Dubuque for snow and ice control on specific county road identified between the hours of 7:00 PM and 4:00 AM Sunday through Saturday.

PRIVATE DRIVEWAYS

The City of Dubuque will not plow or clear snow or ice from private driveways unless it must be done to allow emergency vehicles access to private property for Fire, Police, or EMS emergencies and with the approval of Public Works Field Supervisor. The snow placed in driveways by city snow and ice operations shall be the responsibility of the property owner to remove. Removal of snow and ice from private driveways shall not be placed into the street by property owners.

PLOWING PRIVATE PROPERTIES

The City of Dubuque will not plow or clear snow or ice from private property unless it must be done to allow emergency vehicles access to private property for Fire, Police, or EMS emergencies. Removal of snow and ice from private properties shall not be placed into the street by property owners.

MAILBOXES

Residents are responsible for cleaning snow around their mailbox to ensure delivery of their mail. The resident is also responsible for assuring that the mailbox is properly installed as required by the United States Postal Service Guidelines. This requires the face of the mailbox to be installed 6 inches behind the back of the curb and the mailbox to be adequately constructed to withstand city snow and ice operations.

DAMAGES

If you feel the City, or a City employee acting within the course and scope of the employee's employment, has damaged your property or injured you, we encourage you to file a claim. Attach all relevant documents, such as bids, receipts, invoices, pictures and other supporting documents to the claim form. The sooner you file a claim, the more likely it is that the evidence will be easily gathered. For more information, please visit:

<https://www.cityofdubuque.org/74/Filing-a-Claim>





APPENDIX

PUBLIC WORKS DEPARTMENT
CITY OF DUBUQUE
925 KERPER CT





ANTI-ICING

PRIMARY ROUTE

Sycamore
E. 16th Street – Elm to Greyhound Park Road
17th Street – Elm to Cox
Cox – 17th to Kirkwood
Kirkwood
Alta Vista – University to Kirkwood
Elm – E. 11th to E. 20th
Greyhound Park Road
Admiral Sheehy Drive
Jackson Street – E. 11th to Aquin
Kerper Blvd – 9/11 Connector to E 16th Street
Chaplin Schmitt
White Street – E. 4th to E. 21st
Central Avenue – 4th to city limits
E. 21st Street – White to Central
E. 22nd Street – Central to Stafford
Merz
Windsor Avenue – Garfield to dead end
Stone Ridge Place
Althausen – Merz to Eagle
Viola – Eagle to Merz
Eagle – Althausen to Viola
Rhombert Avenue
Fengler – Kerper to Rhombert
Roosevelt – Garfield to Peru

Peru Road – Jackson to Riverside Drive
Liberty Street
Mya Rose Court
Marisa Ridge
Cayden Court
Tanzanite Drive – Peru to John Deere Road
Cessna Drive
Enstrom Court
Sheridan
Davis
East 29th Street hill
Lawther – Sheridan to E. 29th
Olympic Heights
Loras Blvd
N. Grandview – Loras to W. 32nd
Madison hill
N. Main
Clarke Drive – N. Main to Asbury
St. Ambrose – Asbury to Clarke Drive
Asbury – University to city limits
W. Locust – W. 17th to Clarke Drive
Rosedale
Kaufmann Avenue – Central to JFK
Kane Street

Chaney Road – Kane to Pennsylvania
Diagonal
Broadway – Diagonal to Putnam
W. 28th Street hill
Putnam
Burlington Street – Putnam to Primrose
Primrose – Burlington to Kane
Saunders
Maplewood – Saunders to Oak Crest
Oak Crest – Maplewood to Berkley
Berkley – Oak Crest to Primrose
W. 32nd Street – Jackson to JFK
Arboretum Court
JFK – Rupp
Hollow Road to Highway 20
Derby Grange Road- JFK to Barnwood Lane
Spring Valley Road
Peach Tree Lane
Charleston Court
Carter Road – W. 32nd to JFK
Arabian Trail
Blanch Street
Hillcrest – Asbury to Rosemont
Rosemont
Keyway – JFK to Pennsylvania
St. John Drive – Asbury to Hillcrest

LIMITED ROUTE

Fengler – Kerper to Rhombert
17th Street – Elm to Cox
Cox – 17th to Kirkwood
Kirkwood
Alta
Vista – University to Kirkwood
Central
Avenue – 4th to city limits
Merz
Windsor
Avenue – Garfield to dead end
Althausen –
Merz to Eagle
Viola
– Eagle to Merz
Eagle
– Althausen to Viola
Roosevelt
– Garfield to Peru
Peru
Road – Jackson to Riverside Drive

Blanche Street Bridge
Tanzanite Dr – Peru to John Deere Road
Sheridan
East 29th Street hill
Olympic Heights
Loras
Blvd
N.
Grandview – Loras to W. 32nd
Madison hill
N. Main
Asbury – University to City Limits
W. Locust – W. 17th to Clarke Drive
Kaufmann Avenue – Central to JFK
Kane Street

Chaney Road – Kane to Pennsylvania
Diagonal
Broadway – Diagonal to Putnam
W. 28th Street hill
Saunders
Maplewood – Saunders to Oak Crest
W. 32nd Street – Jackson to JFK
JFK – Rupp Hollow Road to HWY 20
Derby Grange Road – JFK to Barnwood Lane
Carter Road – W. 32nd to JFK
Hillcrest – Asbury to Rosemont
Rosemont
Keyway – JFK to Pennsylvania



ANTI-ICING

PRIMARY ROUTE

1st Street – Bluff to Locust
4th Street – Bluff to White
5th Street – Bluff to Cul-de-sac
9th Street – Bluff to Kerper
10th Street – Elm St. connector to Bluff
11th Street – Kerper to Central
Jackson Street – 7th to 11th
14th Street – Bluff to Sycamore
Iowa Street
Main Street – Railroad Ave. to W. 17th
Locust Street – Charter to 17th
Bluff – 16th to Dodge
3rd Street – Bell to N. Grandview
W. 5th Street – Bluff to Delhi
W. 8th Street – Bluff to Hill
W. 9th Street – Bluff to University
University – 9th to JFK
Delhi
Booth – University to HWY 20 Connector
Wooten
Langworthy – Hill to James
James Street
Cardiff
Hill Street – 9th to Bryant
Bryant

Rush
Cleveland Avenue
Ramona Street
Highway 20 connector at Bryant
S. Grandview – Mt. Carmel to Loras
Southern Avenue – Valley to Rockdale
Rockdale Road – Grandview to city limits
Twin Valley
Julien DBQ Dr. – S. Grandview to WPC Plant
Old Mill Road
Kelly Lane
Creekwood
Manson Road Bridge
Fremont – Lombard to Cedar Cross Road
Cedar Cross Road – Fremont to HWY 20
Brunskill Road
N. Cascade Rd. – Cedar Cross to Edval Lane
Tower Drive
Sunset Ridge
HWY 20 connector – Fremont to S Grandview
Bell Street – E. 3rd to Star Brewery
Star Brewery Drive
Veterans Drive
City Hall parking lot and alley

O'Hagen
Mineral – O'Hagen to Devon
Devon Drive
Center Grove Drive
Wacker Drive
Pennsylvania – University to Middle Road
Middle Road – Pennsylvania to city limits
Seippel Road – Middle Road to Highway 20
Landfill Road
Chesterfield Drive
Westside Drive
Cousins Road
Chavenelle Drive
Synergy Court
Chavenelle Court
Innovation Drive
Futuro Court
Associates Drive
Radford Road – Chavenelle to Camelot
Camelot – Radford to Embassy West Dr
Embassy West Drive
Westmark
Mission School Drive
Old Highway 20 – Seippel to HWY 20
Crescent Ridge

LIMITED ROUTE

16th Street Bridge at Kerper
16th Street Bridge at Sycamore
Sycamore Bridge
3rd Street – Bell to N. Grandview
W 5th Street – Bluff to Delhi
W 9th Street – Bluff to University
University – 9th to JFK
Booth – University to HWY 20 Connector
Wooten
Cardiff
Hill Street – 9th to Bryant
Bryant

HWY 20 connector at Bryant and at Hill Street
S Grandview – Mt. Carmel to Loras
Southern Avenue – Valley to Rockdale
S Grandview overpass at HWY 151/61
Mount Carmel
Rockdale Rd – Grandview to city limits
Twin Valley
Old Mill Road
Kelly Lane
Manson Road – Kelly Lane to Creekwood
Creekwood
Fremont – Lombard to Cedar Cross Rd

Cedar Cross Road – Fremont to HWY 20
Center Grove Drive
Brunskill Road
N. Cascade Rd. – Cedar Cross to Bridge
Tower Drive
O'Hagen to Mineral to Devon to HWY 20
Pennsylvania – University to Middle Road
Middle Road – Pennsylvania to city limits
Associates Drive
Radford Road – Chavenelle to Camelot
Camelot – Radford to Embassy West
Embassy West Drive

ROUTE

1

BRYANT STREET
HWY 20 CONNECTOR - BRYANT TO HWY 20
SOUTHERN AVE – S LOCUST TO S GRANDVIEW
HWY 20 CONNECTOR - FREMONT TO S GRANDVIEW
S GRANDVIEW AVENUE
JULIEN DUBUQUE DRIVE
ROCKDALE – GRANDVIEW TO OLD MILL
SOUTHERN AVE – S GRANDVIEW TO ROCKDALE
MT CARMEL ROAD
RUSH STREET
CLEVELAND AVENUE
VILLA - RUSH TO CLEVELAND
MT LORETTA - BRYANT TO VALLEY
VALLEY
ST GEORGE
LEVI - ST GEORGE TO SULLIVAN
SULLIVAN - LEVI TO SOUTHERN

Adeline
Altman Street - off S Grandview
Apple
Arrowhead Drive
Blackhawk Drive
Bradley
Burns
Cannon
Carmel Drive
Curtis
Diane Court
Dillon
Dunleith Court *
Dunn Court *
Dunning
English Lane
Esther
Florence *
Fox Drive
Henderson
Heritage Drive
Hidden Oaks Court
Holly
Idlebrook Court
Indian Ridge

Inland Drive
Julien Dbq Dr – East of S Grandview
Kehl Court
Laurel
Levi
Logan
Loretto Court
Lorimer
Mar Jo Hills
Mayfair Court *
McEvoy *
Mississippi View
Mountain Lane *
Mt Loretta Avenue
Mt Vernon Court *
Oak St - Rising to Burns
Oak Court - East of Rising *
Oeth Court
Overview Court *
Pamela Court
Pear
Perry
Plum
Plymouth Court
Quince

Ramona
Randall
Rider
Riker *
Rising Avenue
River Ridge - Mt Loretta to Tressa
River Ridge - Turnaround
Robin
S Booth
S Hill - Curtis to Grandview
Samuel
Shady Oaks Court
Shady Oaks Drive
State
Sullivan
Tomahawk Drive
Tressa
Union
Valley St Ext.
Victoria Place
Villa
Wallis Place
Whelan
York
Heritage Drive

ROUTE

2

ALTA VISTA - LORAS TO UNIVERSITY
BOOTH STREET - UNIVERSITY TO YMYW DRIVE

DELHI
DEVON
HILL STREET
JAMES STREET
LANGWORTHY - JAMES TO HILL
MINERAL - O'HAGEN TO DEVON
N GRANDVIEW - LORAS TO DODGE
O'HAGEN
UNIVERSITY - W 9TH TO LORAS
W 3RD - BLUFF TO N GRANDVIEW
W 5TH - BLUFF TO DELHI
W 8TH - BLUFF TO HILL *
W 9TH - BLUFF TO UNIVERSITY
WOOTEN
YMYW DRIVE - BOOTH TO HILL

ALPINE
MT PLEASANT - LORAS TO UNIVERSITY
N ALGONA - LORAS TO ST JOSEPH
NEVADA
PRAIRIE - LORAS TO W 11TH ST*
RACE - WEST 11TH TO ROSE*
ROSE - RACE TO ALTA VISTA*
WEST 11TH - PRAIRIE TO RACE*

Air Hill
Alice *
Alta Vista - University to W 5th
Arlington*
Auburn - Grace to University
Avon Street *
Belmont*
Bennett Street
Booth - University to Loras
Burch
Caledonia
Cambridge Court
Cardiff
Carlotta
Center Place *
Chestnut*
Clara Court
College - Don't plow on walks
Collins Street
Cooper Pl - plow to Island *
Cox - Loras to Chestnut *
Croyden Crest
Dell Street *
Douglas
Emmett *
Ethel
Fenelon Place *
Finley - University to McCormick
Forest Lane
Gandolfo Street
Gilliam
Gilmore *
Glen Oak - Loras to University

Glen Oak - University to W 3rd*
Grace Street
Griggs Place *
Grove Terrace *
Hale
Harvard *
Highland Place*
Ida
Jefferson *
Jenni Lane
Kelly's Bluff*
Langworthy - Alpine to College
Langworthy - Hill to Alpine
Lois
Lombard
Maiden Lane *
Martha
Mazzuchelli Place
McClain
McCormick St - Bennett to University
Meadow Lane - North of Dodge
Melrose Terrace
Mineral
Needham Place *
New Haven
Nowata
Olive *
Oxford *
Parkway
Paulina
Pearl
Plaza 20 Frontage Road to West End
Prairie*

Princeton Place
Prospect*
Prysi
Raymond Pl - plow to wall *
Reeder
Roberts
Roland
Rose Street*
Solon - Alpine to Booth
Solon - Hill to Alpine
Spruce *
St Joseph Street
St Mary's *
Stetmore
Stewart Street*
Summit*
Theisen
W 11th - Bluff to Wilson*
W 7th - off of Air Hill*
W. 3rd - Grandview to Dead-end
W. 8th - Air Hill to Roberts
W. 8th - Hill to Air Hill*
W 12th St - Bluff to Arlington *
Walnut*
West
Wilbur Lane *
Wilson - 11th to University *
Wilson - University to 5th
Winona
Wood St - Loras to University
Yale Court - University South to alley only
Stewart Street*
Summit*

* NARROW STREET

ORANGE = ARTERIAL

BLUE = COLLECTOR

BLACK = RESIDENTIAL

ROUTE

3

ASBURY – 6900 TO SEIPPEL ROAD
ASBURY - JFK TO CITY LIMITS
CENTER GROVE DRIVE
HILLCREST - JFK TO ROSEMONT
HOLLIDAY DRIVE
JFK ROAD - UNIVERSITY TO ASBURY
KEYWAY DRIVE
PAYTON DRIVE
PENNSYLVANIA - JFK TO N W ARTERIAL
ROSEMONT
ST. JOHN DRIVE - ASBURY TO HILLCREST
WACKER DRIVE
ADMIRAL
AURORA - ADMIRAL TO ROSEMONT
BIES DRIVE
CENTURY DRIVE
CORA DRIVE
DONOVAN
FOOTHILL ROAD – JFK TO KEYWAY
HILLCREST - ROSEMONT TO ADMIRAL
KENNEDY CIRCLE
LUCY STREET
MARJORIE CIRCLE
MEINEN COURT
OAK PARK COURT
OAK PARK PLACE
WELU DRIVE – MARJORIE TO OAK PARK
WOODLAND DRIVE – KEYWAY TO FOOTHILL

Alicia
Amy Court
Andrea
Aurora
Century Circle
Clifford
Creston
Crestwood
Dana Drive
Daniels
Daykin Court*
Delmonaco
Eastgate Court
Ellen
Glen Cove
Glenwood Court
Graham Circle
Graham Court

Grant & alley off Grant
Hamblin Court *
Hansel
Inn Plaza frontage road
Kebbie
Key Corners
Key Largo
Keymeer
Keymont
Keymont Court
Keystone
Lagen
Lea Lane
Lisa Court
Norland
Paisley Court
Phyllrich
Richie

Sharon Drive
Short
Southway
St Celia
St John - Hillcrest to Keymeer
Stoneman Road
Suzanne Drive
Sylvan
Venture Court
Vizaleea
Welu – Oak Park Place to dead end
West Way - both ends
Westridge Court*
Westridge
Wingate Drive
Winne Court
Woodland – Dana to Keyway
Woodrow

ROUTE

4

BERKLEY - OAKCREST TO PRIMROSE
BROADWAY - DIAGONAL TO PUTNAM
BURLINGTON - PUTNAM TO PRIMROSE
CHANEY - KANE TO ASBURY
DIAGONAL
KANE - KAUFMANN TO N GRANDVIEW
KANE - N GRANDVIEW TO CARTER
KAUFMANN - CENTRAL TO N GRANDVIEW
KAUFMANN - N GRANDVIEW TO BONSON
MAPLEWOOD - SAUNDERS TO OAKCREST
N GRANDVIEW - KAUFMANN TO 32ND
OAKCREST - MAPLEWOOD TO BERKLEY
PRIMROSE - BURLINGTON TO KANE
PUTNAM
SAUNDERS
W 28TH

ANDREW COURT
BOYER - ANDREW COURT TO MEADOW WOOD
BROADWAY - 28TH TO PUTNAM
DAVENPORT - 28TH TO STOLTZ
HELEN RIDGE COURT
MEADOW WOOD - BOYER TO WILDWOOD
NORTHRIDGE
PRIMROSE - BURLINGTON TO DAVENPORT
STOLTZ
WILDWOOD

Altura
Balboa
Becker Court
Berkley
Boyer - N. Grandview to Andrew Ct.
Burlington
Carr *
Carroll *
Cerro
Cortez
Corto Drive
Cottonwood Court *
Cushing
Division *
Francis
Fulton
Gay
Greeley
Greenfield*
Greenwood Court

Heeb off Kaufmann *
Hickory Hill Court
Hickory Hill
Katrina Circle
Ken Court
Keokuk Court
Keokuk Street
King
Kurt Court*
Linda Court
Lobo Lane
Lori
Madera
Maplewood Court
Maryville
Meadow Wood
Mesa Drive
Miracle League Drive
Monroe
Muscatine
National to Dead End

Oakcrest
Pleasant View *
Primrose Court
Renaissance Drive
Sabula
Sarah
Scenic View
Schiltz Court
Shady Lane
Shetland Court
Spring Green Court *
Stevens Court
Timberline
Tina Ridge
Traut Terrace *
Valeria
Ventura *
W 23rd
W 24th
Wildwood Court

ROUTE

5

ADMIRAL SHEEHY DRIVE
ALTHAUSER - MERZ TO EAGLE
E 22ND - ELM TO STAFFORD
E16TH STREET – KERPER BLVD TO GREYHOUND PARK RD
EAGLE - ALTHAUSER TO VIOLA
FENGLER
GARFIELD AVENUE
GREYHOUND PARK ROAD
KERPER - 16TH TO HAWTHORNE
MERZ
RHOMBERG AVENUE
ROOSEVELT - PERU TO GARFIELD
STONE RIDGE PLACE
VIOLA - EAGLE TO MERZ
WINDSOR -GARFIELD TO NORTH END
AMELIA DRIVE
CIDER RIDGE
HAMILTON - KERPER TO KILGORE
HAWTHORNE
JANSEN *
JONATHAN LANE
KILGORE DRIVE
LINCOLN AVENUE
ORCHARD DRIVE
ROOSEVELT EXT - KERPER TO KILGORE
SHIRAS AVENUE

Althauser *
Amelia Circle
Ann Street
Ascension*
Bald Eagle Court
Baldwin
Brecht Lane *
Clinton
Cobalt Court
Columbia*
Decatur
Delicia
Dock Street - to RR Tracks
Eagle Point Drive - Shiras to Tennis Courts
Eagle Street *
Eagle Valley Drive
Edison
Edwards
Emerson
Farley

Farragut
Garfield - Stub off Hawthorne
Garfield Ext - Shiras to Farragut
Golden Eagle Drive
Hamilton - Prescott to RR Tracks
Harbor
Harpy Eagle Court
Hennepin *
Henry
High Bluff
Humboldt
Johnson
Kerper Court
Lindberg Terrace*
Marquette Place
Marshall
Peosta - Hawthorne to Kerper
Peosta - off Garfield at Fengler
Pfozter
Pleasant*
Prescott

Prince
Providence*
Queen
Regent
Ries *
Riverview *
Schiller - to R R Tracks
Shiras Extension
Sky Blue Drive
Stafford - Merz to End*
Stafford
Stanton
Stellar Eagle Drive
Sumner
Sunflower Circle
Sutter
Thomas Place*
Volunteer Drive
Wake Robin Circle
Whittier

ROUTE

6

10TH - CENTRAL TO BLUFF

11TH - KERPER TO CENTRAL

14TH - BLUFF TO SYCAMORE

17TH - W LOCUST TO ELM

1ST - BLUFF TO MAIN

3RD - BLUFF TO BELL

4TH - BLUFF TO WHITE

5TH - CENTRAL TO BELL

9TH - BLUFF TO KERPER

BELL STREET

BLUFF - 16TH TO DODGE

CENTRAL - 21ST TO 4TH

E 21ST ST- WHITE TO CENTRAL

E 16TH - ELM TO KERPER BLVD

ELM - 9TH TO 20TH

IOWA STREET

JACKSON - 7TH TO 20TH

KERPER - 911 CONNECTOR TO 16TH

LOCUST - W 17TH TO CHARTER

LOCUST STREET CONNECTOR

MAIN - RAILROAD TO 17TH

PINE - 9TH TO 11TH

RAILROAD AVENUE

SYCAMORE

WHITE - 4TH TO 21ST

CHARTER - HARRISON TO S LOCUST

E 20TH STREET

HARRISON - RAILROAD TO CHARTER

ALTA VISTA - LORAS BLVD TO DEADEND

10th - Elm St. Connector to Central

11th - Central to Bluff

12th - Kerper to Bluff

13th - Pine to Locust

15th - Sycamore to Bluff

16th - Elm to Bluff

17th - R R Tracks to Elm

18th Street

19th Street

1st - Locust to Iowa

1st - Terminal to RR tracks

2nd - Bluff to Iowa

4th - Bluff to the elevator

5th - Central to Bell

6th - alley east of Locust to Bluff

7th - Iowa to Commercial

7th - alley east of Locust to Bluff

Bell Street

Bissell Lane - Jones to Dodge

Camp Street

Cedar - 14th to 16th

Charter - Main to Salina

Commercial - E 7th to Shot Tower

E 6th - Central to Jackson

E 8th - Central Ave to Washington

Harrison - Charter north

Harrison - Jones to bridge

Huff Street

Ice Harbor Drive

Jackson - 6th to 7th

Jones - Bluff to Locust Frontage Rd

Jones - Harrison to HWY 61/151

Jones - HWY 61/151 to Terminal

Koch Court

Locust/Dodge Frontage Rd.

Maple

Pine - 14th to 16th

Pine Street - 18th to Garfield

Purina

Salina Street

Star Brewery Drive

Terminal

Veterans Drive

W 8th - Iowa Ave to Bluff

Washington - 7th to 20th

Water Street

* NARROW STREET

ORANGE = ARTERIAL

BLUE = COLLECTOR

BLACK = RESIDENTIAL

ROUTE

7

CLARKE DRIVE - N MAIN TO ASBURY
LORAS BLVD
MADISON
N GRANDVIEW - LORAS TO KAUFMANN AVENUE
NORTH MAIN
ST AMBROSE - ASBURY TO CLARKE DRIVE
W LOCUST - 17TH TO CLARKE DR
ALTA VISTA - LORAS BLVD TO DEADEND
ASPEN - N GRANDVIEW TO CLARKE CREST
CLARKE CREST - ASPEN TO CLARKE DR
COX - W. 17TH TO KIRKWOOD
KIRKWOOD
W 17TH - W. LOCUST TO COX ST

Abbott
Adair
Algona - N Grandview to University
Almond *
Alta Place
Angella - Cox to W. Locust
Ashton *
Aspen Court *
Atlantic - N Grandview to University
Auburn - N Grandview to University
Audubon
Avoca
Blake
Bunker Hill - Asbury to Club House
Catherine - 16th to 17th
Catherine - Dead-ends off Angella*
Chapel Court *
Cherry - Asbury to Avoca
Clark Street - to South side
Clarke Crest Court
Clarke Crest Drive
Clarke Drive - East of N Main
Cornell
Cottage Place
Cummings Court
Custer
Decorah - & East of Grandview
Delaware - & East of Grandview

Dexter - & East of Grandview
Dorgan Place *
Dunham Court
Dunham Lane
Edina
Elizabeth *
Ellis
Fairview *
Fairway
Farrell Court
Fillmore
Foye - Clarke Dr to Napier *
Foye - off W Locust *
Glen Oak - Loras to Rosedale
Gold*
Green - Asbury to N Algona
Harold
Heeb - 17th to Clarke Dr *
Hempstead
Henion - Loras to Picket *
Hodgdon *
Hoyt*
Irving
Kleine *
Klingenberg - toward guard rail*
Knight Court
Kuhn Lane
Lacey Court
Lawndale *

Lowell
May Place *
Merchants Lane *
Montcrest
Montrose*
Mt Pleasant - Loras to Dead-end
Napier*
Park
Paul
Pickett*
Pierce Street
Quigley Lane*
Raven Wood Court
Rosaline *
Rosedale
Schroeder
Shelby *
Spires Court
Spires Drive
St Ambrose
Sunnyview
Ungs*
Vernon
W 15th *
W 16th Cornell to Montrose*
W 16th Cornell to Dead-end
Wood - Rosedale to Loras
Woodworth *

ROUTE

8

ASBURY – UNIVERSITY TO JFK
CARTER - ASBURY TO JFK
CHANEY- ASBURY TO PENNSYLVANIA
HILLCREST - ASBURY TO JFK
PENNSYLVANIA - UNIVERSITY TO JFK
UNIVERSITY - LORAS TO JFK

AVALON
HILLCREST - JFK TO PASADENA
PASADENA DRIVE – SOUTH END TO FOOTHILL
RIDGE ROAD
ST ANNE DR - CHANEY TO RIDGE ROAD
VAN BUREN

Alpha
Austin *
Beverly
Born
Bristol
Broadlawn
Brown
Bunker Hill - Green to Asbury
Butterfield - Stub off Carter Road
Butterfield
Carlton
Carter Court
Cherbourg Court
Cherry - Pennsylvania to Asbury
Churchill
Deborah
Drexel
Earl
Eden Lane
Enid
Erie Court

Fairfax
Finley - University to Bunker Hill
Floraview
Foothill - East of JFK
Foothill Court
Glendale Court
Green - Pennsylvania to Asbury
Hickson
Horizon Court
Ideal Lane
Illinois
Indiana Court
Indiana
Isborn
Jeffrey
Judson Court
Judson
Kensington
Lenox
Marmora
McPoland
Merfeld Lane

Missouri
Morningview
Mullen
Nebraska
Ogilby
Ohio
Palm Court
Pasadena Court
Pasadena Dr – Foothill Ct to Northend
Poplar
Powers Court
Ridgeway - Plow to Field
Ruann
St Anne Court
St Anne - Chaney to Wilbricht Ln
Sundown Court
Tyler
Vail Trail
Valley View
Wilbricht Lane
Wisconsin

ROUTE

9

SEIPPEL RD – HWY 20 TO MIDDLE RD
SEIPPEL COURT

AIRBORNE RD
CHESTERFIELD DRIVE
CHAVENELLE ROAD
INNOVATION DR
SYNERGY COURT

CHAVENELLE COURT
OLD HIGHWAY RD - HWY 20 TO SEIPPEL
WESTSIDE DRIVE
STONE VALLEY DRIVE
BOULDER BROOK COURT
SOUTH BOULDER BROOK

COUSINS ROAD – OLD HIGHWAY RD TO DEADEND
PENNSYLVANIA - N W ARTERIAL TO MIDDLE RD
MIDDLE RD – SEIPPLE RD TO MOUNTAIN RIDGE
RADFORD RD - CHAVENELLE TO CAMELOT

ASSOCIATES DRIVE
FUTURO COURT
CAMELOT - EMBASSY WEST TO RADFORD
EMBASSY WEST DRIVE
WESTMARK DRIVE
MISSION SCHOOL DRIVE

SIMMONS WAY
HEACOCK ROAD (1300' WEST OF PENN)
VERENA COURT

WAL-MART FRONTAGE ROAD - W ENTRANCE TO WHITE FRONT FEED

Commerce Park
Kingsley Court
Kingsley Lane
North Cavendish Lane
North Dorchester
North Westbrook Drive

North Willshire Lane
Pebble Creek Drive
Radford Court
Radford Road - Old Hwy Rd to Dead-end
Shrewsbury
South Cavendish Lane
South Dorchester

South Wellington Lane
South Westbrook Drive
South Willshire Lane
Stone Valley Drive
Trails Edge Drive
Wolff Road

* NARROW STREET

ORANGE = ARTERIAL

BLUE = COLLECTOR

BLACK = RESIDENTIAL

ROUTE

10

ARABIAN TRAIL
CARTER RD - 32ND TO ASBURY
DERBY GRANGE ROAD - JFK TO BARNWOOD
JFK RD – RUPP HOLLOW ROAD TO ASBURY
SPRING VALLEY ROAD
W 32ND STREET

ARBOR HILLS DR - OLDE COUNTRY LANE TO HIGHLAND PK
BONSON - KAUFMANN TO DOVE
CRISSY DRIVE
DAVID DRIVE
DOVE STREET - BONSON TO JFK
HIGHLAND PARK - ARBOR HILLS TO W 32ND
MARYWOOD - CRISSY TO JFK
MATTHEW JOHN DRIVE
OLDE COUNTRY LANE
SUNSET PARK CIRCLE - JFK ROAD TO MEGGAN

Arbor Hills Drive
Arbor Oaks Court
Arbor Oaks Drive
Arboretum Drive – to the gate
Arrowwood Lane
Ashley Drive
Barnwood Lane
Bittersweet Lane
Blasen
Brandywine Park
Brueck - Include 1/2 Block West from Blasen
Buckskin Circle
Caroline Court
Castle Woods Drive
Cedar Heights Court
Charleston Court
Chippewa
Clydesdale Court
Copperfield
Country Cove
Danlin Court
Evergreen Drive
Fox Hollow Drive
Foxborough Court
Garden Glen Drive

Glenview Circle
Gordon Drive
Hacienda
Harvest View Drive
Hibiscus Lane
Highland Park Drive
Hilton Springs Drive
HiView Circle
Honeysuckle Lane
Huntington Drive
John Wesley Drive
Judge Lane
Kane Court
Karen
Kerry Court
Kevindale
Killarney Court
Kimberly
Kiv Berry Court
Kristen Court
Lasso Ct - to first bump out
LaVista Court
Lindale
Martin Drive
Marywood

Meggan
Mill Run
Millstone Drive
Oak View Court
Ogle
Olde Country Court
Owen Court
Palomino Circle
Peach Tree Lane
Raven Oaks
Rosewood
Rustic Point Lane
Seville
Sickle Lane
Spring Oaks Court
Theda Drive
Tibey Court *
Tiffany Court
Trygg Drive
Wagon Wheel Lane
Waller
Westmore
Wheatland Drive
Wilderness Road
Woodlawn

* NARROW STREET

ORANGE = ARTERIAL

BLUE = COLLECTOR

BLACK = RESIDENTIAL

ROUTE

11

CENTRAL AVENUE - 21ST TO 32ND
DAVIS
E 24TH - CENTRAL TO WINDSOR
E 29TH STREET HILL
EAST 22ND STREET - CENTRAL AVE TO ELM
JACKSON - 20TH TO AQUIN
LAWTHER - SHERIDAN TO E. 29TH
PERU ROAD - JACKSON TO RIVERSIDE DRIVE
SHERIDAN
TANZANITE DRIVE
BURDEN
EAST 32ND STREET
EDITH - BURDEN TO SHERIDAN
ELM STREET - 20TH TO 22ND
ELM STREET - 22ND TO 30TH
HOGREFE
LEMON STREET
OLYMPIC HEIGHTS
W 30TH - JACKSON TO LEMON
WHITE STREET - 21ST TO 32ND

30th Street
Aerostar
Aquin
Argyle
Balke
Blanche Avenue *
Brunswick - 3 parts
Buckeye
Buena Vista
Cayden Court
Cessna Drive
Chicago
Diamond
East 21th Street - White to Kniest
East 25th Street
East 26th Street
East 27th Street
East 28th Street

East 29th Street
Edith
Elbow Lane *
Enstrom Court
Euclid
Excelsior
Goethe
Groveland
Harland
Hawkeye
Hedley
Inwood - 3 parts
Kennedy Court
Kniest
Liberty
Liebe
Louella Lane
Louise Lane *

Marisa Ridge
Millenium Drive
Milwaukee
Mya Rose Court
Oneida
O'Neill
Pinard St - 24th North to dead-end *
Pinard St - 26th North to dead-end *
Piper Court
Ruby
Salem
Sapphire Circle
Strauss
Tanzanite Court
Toledo
Vinton *
Walker
Washington Street - 20th - 30th

* NARROW STREET

ORANGE = ARTERIAL

BLUE = COLLECTOR

BLACK = RESIDENTIAL

ROUTE

12

	CEDAR CROSS ROAD	
	CREEKWOOD DRIVE	
	FREMONT AVENUE	
	KELLY LANE	
	KEYWEST DRIVE - MAQUOKETA DR TO CITY LIMITS	
	NORTH CASCADE – CEDAR CROSS TO EDVAL	
	OLD MILL ROAD	
	ROCKDALE ROAD OLD MILL RD TO CITY LIMITS	
	SOUTH POINT DRIVE	
	TWIN VALLEY DRIVE	
	BRUNSKILL - DODGE TO SOUTHGATE*	
	CEDAR TRAILS DRIVE	
	COATES - FREMONT TO SOUTHGATE	
	DATA COURT	
	DIGITAL DRIVE	
	HWY 20 FRONTAGE RD - BRUNSKILL TO CEDAR CROSS	
	MCDONALD DRIVE	
	STARLIGHT DRIVE	
	NORTH CRESCENT RIDGE	
	MANSON ROAD	
	NIGHTENGALE LANE	
	TOWER DRIVE	
	VALENTINE DR	
	SILVER OAKS DRIVE	
Abaca Court	Deer Creek Ridge	Mela Drive
Acacia Court	Dorothy Kay Drive	Miller Road
Anee Court	Duggan Drive	Moore Heights
Barbaralee Drive	Ebony Drive	Nocturnal Lane
Beacon Hill Drive	Eclipse Circle	Oak Ridge
Bianca Drive	Edwards Road	Patricia Ann Drive
Bonnie Court	Elaine Court	Pego Court
Brian Drive	Elmwood Drive	Richards Rd to 1020 only
Brookview Square	Emily Drive	Rockwood Court
Cambria Drive	Fameza Drive	Simpson
Camilla Court	Flint Hill Drive	South Bend Circle
Candlewick Court	Geraldine Drive	South Park Court
Carriage Hill Court	Heather Glen	Southgate Drive
Carriage Hill Drive	Highlander Court	St Joseph Street
Cedar Crest Court	Hughes Court	Stetmore
Cedar Crest Ridge	Hunter's Ridge	Summit Hill Drive
Cedar Cross Court	Jaeger Drive	Sunset Ridge
Cherokee Drive *	Jovie Court	Tanglewood Court
Cherry Ridge Court	June Drive	Thornwood Court
Cody Drive	Kathy Drive	Thornwood Drive
Concord Court	Knob Hill Drive	Timber Hyrst Court
Concord Street	Lake Ridge Dr – Cedar Cross to Woodland	Valentine Drive
Council Hill Drive	Lunar Drive	Wartburg Place
Crescent Court	Manson Road	Water Bridge Lane
Cross Hill Drive	Marion	Whisper Woods Lane
Cross	Meadow Lane - off St Joseph	Woodland Ridge Drive

* NARROW STREET

ORANGE = ARTERIAL

BLUE = COLLECTOR

BLACK = RESIDENTIAL

ROUTE



CENTRAL - W 32ND TO NW ARTERIAL
NORTH WEST ARTERIAL

PLAZA DRIVE

Ambassador Court
Angel View Drive
Camelot Drive
Colonel Drive
Dallas Court
Embassy Court
Gabriel Court

Gabriel Court
Gabriel Drive
High Cloud Drive
Hummingbird Drive
Little Valley Drive
Long View Drive
North Court

North Star Drive
Northrange Court
Red Violet Drive
Samantha Drive
Sunnyslope Drive
Twilight Drive
Wildflower Drive

ROUTE

14

831 KAUFMANN TO THE "Y"

DAVIS STREET ALLEY

CORA DRIVE - WEST OF DONOVAN

E 21ST STREET - WHITE TO KNIEST

ELM STREET - 24TH TO 26TH WEST LANE

ELM STREET - 20TH TO 22ND

JANSEN

KNIEST

STOLTZ - BURLINGTON TO DAVENPORT

Almond
Althausen
Ascension
Aspen Court
Austin
Blanche Avenue
Brecht Lane
Brunswick - Link south
Brunswick - North of Davis
Carr
Carroll
Chapel Court
Clinton - Queen West
Columbia
Cottonwood Court
Daykin Court
Division
Dorgan Place
Eagle Street
Edith - Dead-end
Elbow - Off Peru

Foye - Clarke Dr to Napier
Foye - off W Locust
Gold
Greenfield
Hamblin Court
Heeb - 17th to Clarke Dr
Heeb off Kaufmann
Hennepin
Hodgdon
Hoyt
Kleine
Klingenberg - toward guard rail
Kurt Court
Lindberg Terrace
Louise Lane
Merchants Lane
Montcrest
N. Grandview Alley to Ambrose
Napier
O'Neill - Dead-end
Pinard St - 24th North to deadend
Pinard St - 26th North to deadend

Pinard St - 27th North to deadend
Pleasant
Pleasant View
Providence
Ries
Riverview
Rosaline
Salem - Inwood East & 2 stubs
Shelby
Spring Green Court
Stafford - Merz to End
Thomas Place
Tibey Court
Traut Terrace
Traut Terrace Alley
Ungs
University Ave Alley (to 767 University)
Ventura
Vinton
Westridge Court
Woodworth

ROUTE

15

	W 8TH - BLUFF TO HILL	
	BRUNSKILL - DODGE TO SOUTHGATE	
	COX - W. 17TH TO KIRKWOOD	
	KIRKWOOD TO DEAD END	
	RACE - WEST 11TH TO ROSE	
	ROSE - RACE TO ALTA VISTA	
	W 17TH - W. LOCUST TO COX ST	
Alice	Glen Oak - University to W 3rd	Pickett
Angella - Catherine to W Locust	Griggs Place	Prairie
Arlington	Grove Terrace	Prospect & Alley to Needham
Ashton	Grove Terrace	Quigley Lane
Avon Street	Harvard	Raymond Pl - plow to wall
Belmont	Henion - Loras to Picket	Reeder
Catherine - Dead-ends off Angella	Highland Place	Riker
Center Place	Hill Street Stub b/w W 8th and Caledonia	Rose Street
Chestnut*	Jefferson	Spruce
Cooper Pl - plow to Island	Kelly's Bluff	St Mary's
Cornell	Lawndale	Stewart Street
Cox - Loras to Chestnut	Maiden Lane	Summit
Cummings Court	May Place	Summit & 3rd Alley
Dell Street - Loras to Air Hill	Mayfair Court	W 11th - Bluff to Wilson
Dunleith Court	McEvoy	W 12th St - Bluff to Arlington
Dunn Court	Montrose	W 15th
Elizabeth	Mountain Lane	W 16th Cornell to Montrose
Emmett	Mt Vernon Court	W 7th - off Hill
Fairview	Needham Pl	Walnut
Fenelon Place	Oak Court - East of Rising	Wilbur Lane
Florence	Olive	Wilson - 11th to University
Gilmore	Overview Court	Yale Court Alley
	Oxford	

NORTH WALKS & STEPS

PRIMARY ROUTE

1300 Main St (W)	St. Joseph Overpass (W)	Asbury at University - NE corner along empty lot (W)
City Hall (W)	Marion/St Joseph (W)	Gaye St ROW - 675 Kane Street 75' (W)
12th & Central Parking Lot (W)	Concord - Marion to Dodge (W)	Kaufmann Ave - along city lot between 3165 and 3145 Kaufmann (W)
11th & Bluff Parking Lot (W)	Fremont Bridge (W)	Island at St Ambrose & Clarke Drive (X)
10th & Bluff on north side (W)	Locust at Dodge (W)	Green & N Algona NW Corner - both sides (W)
9th & Bluff Parking Lot (W)	Locust at Dodge - NW corner from 19 Locust to alley (W)	Asbury at University - NE corner along empty lot side of intersection (W)
9th & Hill traffic Island (X)	Locust Street overpass and connector (W)	Elm Street - 11th to 12th on the east side (W)
5th & Bluff Parking Lot (W)	Saunders - along city owned lot on south side (W)	1146 Elm Street (W)
Brunskill Road Bridge (W)	N. Grandview - across from Water reservoir - 500' (W)	University at Asbury - NE corner along empty lot (W)

SECONDARY ROUTE

3rd Street overpass (W) (S)	606 to 576 W. Locust (W)	Kaufmann - 101' across from 611 (W)
West 11th Street - Bluff to Highland (S)	706 to 690 Angella (W)	West 17th Street at Elm (S)
Dell Street (W) (S)	2172 Hogdon (W)	West 17th Street at Jackson St (S)
459 to 465 Loras to Montrose (S)	Clarke Dr at Foye (W) (S)	West 17th Street at Central (S)
Catherine - 17th Street (W) (S)	Kaufmann - base of Napier steps (W)	W Locust St at Clark Street (S)
Madison Hill above Dorgan from 10' south of 1805 to north of 1765 (W)		



SOUTH WALKS & STEPS

PRIMARY ROUTE

Old Mill Road Bridge (W)
Old Mill Road between 1580 Old Mill (W)
Road & Old Mill Road Bridge (W)
Old Mill Road – west side from Old Mill Bridge 300' north (W)
Manson Road Bridge (W)
Rockdale Road Bridge (W)
Creekwood Drive Bridge (W)
Kelly Lane – along city lot (west of 1053 Miller Rd) (W)
Kelly Lane – behind 1508 Pego Ct 175' to 1395 Kelly Ln (W)

S. Grandview Overpass at Kerrigan (W)
Cedar Cross Bridge (W)
Fremont/Lombard Overpass (W)
Dodge Street – Cherokee Drive to Plaza 20 (W)
Hill/Bryant overpass (W)
Grandview – overpass at Dodge (W)
N. Grandview Island at Washington School (W)
Connector – Fremont to S. Grandview (W)

S. Grandview Island at Fremont Connector (W)
Pennsylvania @ NW Arterial (W)
NW corner – 125' (W)
SE corner – 140' (W)
NE corner (W)
Asbury Road @ NW Arterial (W)
NW corner – 125' (W)
NE corner – 75' (W)
Fengler Street overpass (W)

SECONDARY ROUTE

Hill Street at W 7th corner (W)
8th Street - 2 flights (S)
W 7th Street (Hill to W 7th) (S)
W 5th Street steps & the base (W) (S)
S Grandview at Bryant – island (W)
1895 – 1969 W 3rd Street – 100' over sewer (W)

1st & Bluff traffic Island (X)
Van Buren at Drexel – NW corner 75' (W)
Pennsylvania – west of JFK from old (W)
Amoco Station to 3431 Penn (W)
Pennsylvania – Traffic Island at Hempstead School (X)
Keyway Drive alongside of 3500 Keymeer (W)
3800 Bk Asbury Rd – Traffic Island (X)

Asbury Road at JFK Road Traffic Islands (W)
Loras Blvd – along City lot from 1110 Loras to 1390 Glen Oak (W)
N Grandview Avenue/Delhi roundabout (X)
N Grandview Avenue/University roundabout (X)
Clarke Dr/W Locust Traffic Island (X)
16th Street Bridge (W)

BRIDGES & OVERPASSES

PRIMARY ROUTE

16th Street Bridge at Kerper

16th Street Bridge at Sycamore

Sycamore Street

Rhomberg (Bee Branch Bridge)

E 22nd Street (Bee Branch Bridge)

Cedar Cross Road

N. Cascade Road

Brunskill Road

Fremont Avenue

Manson Road

Old Mill Road

Rockdale Road

3rd Street Overpass

Grandview at Dodge

Hill at Dodge

Lombard at Dodge

Fengler

Blanche

Creekwood

NW Arterial - (2 Bridges)

Seippel Rd

Airborne Road

S. Grandview Avenue

Herber Road (7:00 PM - 4:00 AM)



REMOVAL AREAS

Main - 14th to 1st Street - except plaza
Locust - Dodge to 14th Street
Bluff - 14th to Dodge Street
Central - 4th to 32nd
Iowa - 14th to 3rd
White - 4th to 21st
South Locust
1st - Bluff to Main
2nd - Bluff to Main
3rd - Bluff to Main
4th - west end to White
5th, 6th, 7th and 8th - Bluff to White
9th - Bluff to Kerper
10th - Bluff to White
11th - Bluff to Elm
12th, 13th, 15th and 16th - Bluff to White
14th and 17th - Bluff to Elm
18th, 19th, 20th and 21st - Central to White
20th and 22nd - Central to Elm
E 3rd - Main to Bell
E 5th - White Street, east to the cul-de-sac
Bell Street
Star Brewery Drive
Veterans Drive
West 9th - Bluff to University
West 8th - Bluff to Hill
Central - 22nd to 32nd
University - 9th to Delhi
Delhi - Grandview to University
Rhomberg - Elm to Marshall
West Locust - 17th to Kirkwood
Loras - Bluff to Prairie
Railroad Avenue
Jones - Bluff to Locust
Streets serving Schools



ICE ACCUMULATION

ROUTE 01

Sycamore
E. 16th Street – Elm to Greyhound Park Road
17th Street – Elm to Cox
Cox – 17th to Kirkwood
Kirkwood
Alta Vista – University to Kirkwood
Elm – E. 11th to E. 20th
Greyhound Park Road
Admiral Sheehy Drive
Jackson Street – E. 11th to Aquin
Kerper Blvd – 9/11 Connector to E 16th Street
Chaplin Schmitt
White Street – E. 4th to E. 21st
Central Avenue – 4th to city limits
E. 21st Street – White to Central
E. 22nd Street – Central to Stafford Merz
Windsor Avenue – Garfield to dead end
Stone Ridge Place
Althausen – Merz to Eagle
Viola – Eagle to Merz
Eagle – Althausen to Viola
Rhomberg Avenue
Fengler – Kerper to Rhomberg
Roosevelt – Garfield to Peru

Peru Road – Jackson to Riverside Drive
Liberty Street
Mya Rose Court
Marisa Ridge
Cayden Court
Tanzanite Drive – Peru to John Deere Road
Cessna Drive
Enstrom Court
Sheridan
Davis
East 29th Street hill
Lawther – Sheridan to E. 29th
Olympic Heights
Loras Blvd
N. Grandview – Loras to W. 32nd
Madison hill
N. Main
Clarke Drive – N. Main to Asbury
St. Ambrose – Asbury to Clarke Drive
Asbury – University to city limits
W. Locust – W. 17th to Clarke Drive
Rosedale
Kaufmann Avenue – Central to JFK
Kane Street

Chaney Road – Kane to Pennsylvania
Diagonal
Broadway – Diagonal to Putnam
W. 28th Street hill
Putnam
Burlington Street – Putnam to Primrose
Primrose – Burlington to Kane
Saunders
Maplewood – Saunders to Oak Crest
Oak Crest – Maplewood to Berkley
Berkley – Oak Crest to Primrose
W. 32nd Street – Jackson to JFK
Arboretum Court
JFK – Rupp
Hollow Road to Highway 20
Derby Grange Road- JFK to Barnwood Lane
Spring Valley Road
Peach Tree Lane
Charleston Court
Carter Road – W. 32nd to JFK
Arabian Trail
Blanch Street
Hillcrest – Asbury to Rosemont
Rosemont
Keyway – JFK to Pennsylvania
St. John Drive – Asbury to Hillcrest

ROUTE 02

Fengler – Kerper to Rhomberg
17th Street – Elm to Cox
Cox – 17th to Kirkwood
Kirkwood
Alta Vista – University to Kirkwood
Central Avenue – 4th to city limits
Merz
Windsor Avenue – Garfield to dead end
Althausen – Merz to Eagle
Viola – Eagle to Merz
Eagle – Althausen to Viola
Roosevelt – Garfield to Peru
Peru Road – Jackson to Riverside Drive

Blanche Street Bridge
Tanzanite Drive – Peru to John Deere Road
Sheridan
East 29th Street hill
Olympic Heights
Loras Blvd
N Grandview – Loras to W. 32nd
Madison hill
N. Main
Asbury – University to City Limits
W. Locust – W. 17th to Clarke Drive
Kaufmann Avenue – Central to JFK
Kane Street

Chaney Road – Kane to Pennsylvania
Diagonal
Broadway – Diagonal to Putnam
W. 28th Street hill
Saunders
Maplewood – Saunders to Oak Crest
W. 32nd Street – Jackson to JFK
JFK – Rupp Hollow Road to HWY 20
Derby Grange Road – JFK to Barnwood
Carter Road – W. 32nd to JFK
Hillcrest – Asbury to Rosemont
Rosemont
Keyway – JFK to Pennsylvania



CITY OF DUBUQUE
PUBLIC WORKS DEPARTMENT