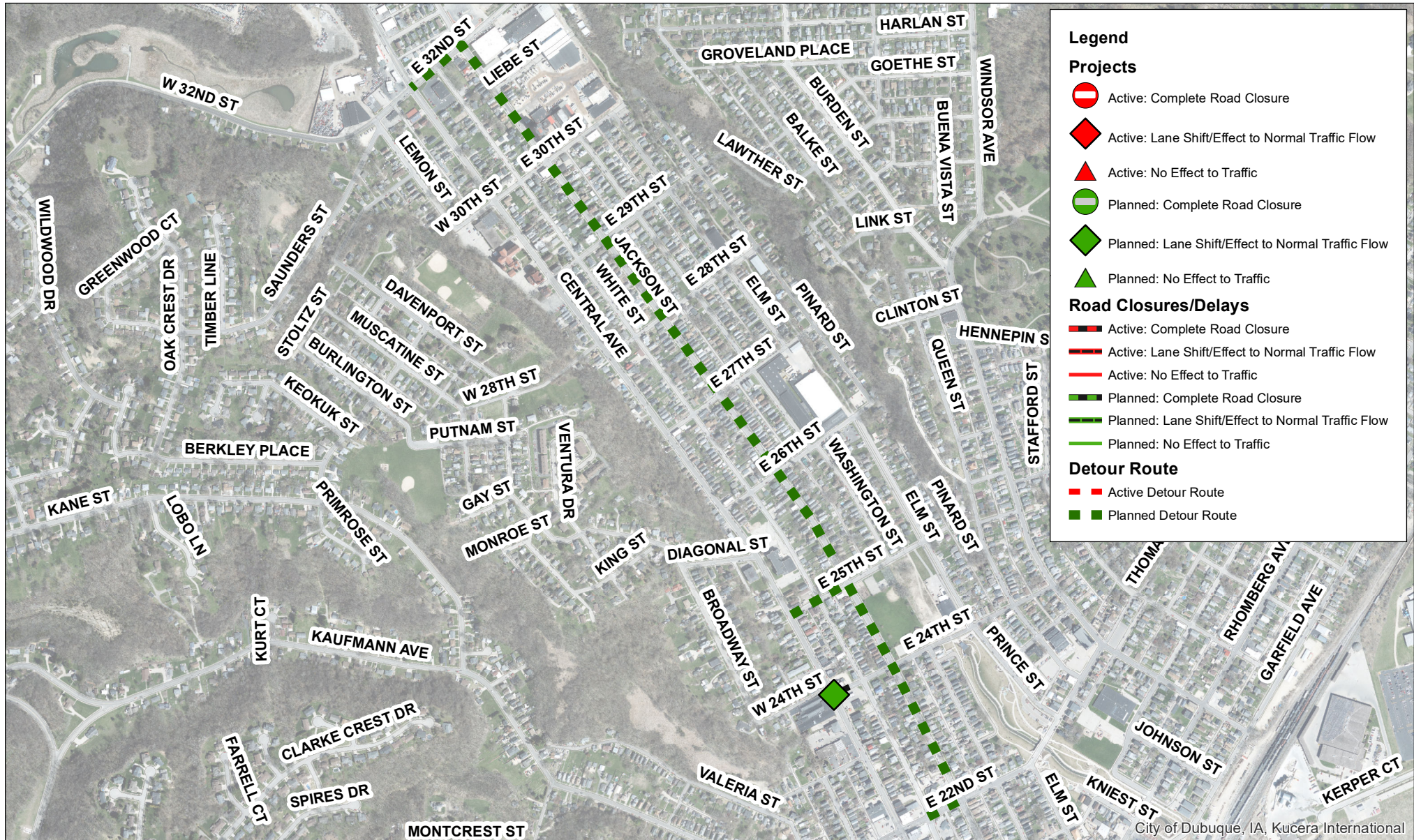
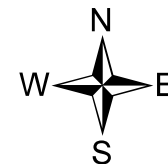


Central Ave Northbound Lane Closure and Detour

Thursday February 17 at 7:00 AM to Saturday February 19 at 7:00 AM



DISCLAIMER: This information was compiled using the Dubuque Area Geographic Information System (DAGIS), which includes data created by both the City of Dubuque and Dubuque County. It is understood that, while the City of Dubuque and participating agencies utilized the most current and accurate information available, DAGIS and its suppliers do not warrant the accuracy or currency of the information or data contained herein. The City and participating agencies shall not be held liable for any direct, indirect, incidental, consequential, punitive, or special damages, whether foreseeable or unforeseeable, arising out of the authorized or unauthorized use of this data or the inability to use this data or out of any breach of warranty whatsoever.



Map Prepared by:
City of Dubuque
Water Department
1902 Hawthorne St
563-589-4291