



Community Profile

City of Dubuque, Iowa

2022



Table of Contents

COMMUNITY-AT-A-GLANCE3

COMMUNITY VITALITY4

FLOWERS8

LANDSCAPED AREAS10

URBAN FORESTRY12

ENVIRONMENTAL EFFORTS14

CELEBRATING HERITAGE17

OVERALL IMPRESSION.....20



Figure 1 City of Dubuque Horticulturist, Kelly Goossen

COMMUNITY-AT-A-GLANCE

Community name: City of Dubuque

Phone: 563-589-4264

County/township: Dubuque County

Contact name: Marie Ware, Leisure Services Manager

AIB committee chair contact: Steve Fehsal, Park Division Manager

Population: 58,052 (2020, US Census)

Website: www.cityofdubuque.org

Area in square miles: 32.3 mi²

Acres of active recreation: 31 miles of trails and 45 developed parks totaling 1008 acres.

Acres of passive recreation: 50 acres in four passive recreation parks plus another 14 acres of donated yet not developed park, 110-acre Bunker Hill Golf Course, Mines of Spain State Recreation Area (1298 acres) borders the EB Lyons Prairie and Woodland Preserve (87 acres) Rip Row Valley (12 acres) and the Julien Dubuque Monument.

Form of government (mayor, council, manager, etc.) Mayor, City Council, City Manager.

What jurisdiction(s) operates the public-school system? Dubuque Community School District.

What jurisdiction operates the utilities (water, sewer, electrical, trash, recycling, etc.)? The City of Dubuque operates all the utilities within City limits with the exception of natural gas, electricity, and broadband. Black Hills Energy provides natural gas; Alliant Energy provides electricity; and multiple private companies provide broadband services.

Do you have a volunteer coordinator? No, however a Volunteer Generation Fund Grant assisted efforts that established and now promote the volunteer matching site called [Volunteer DBQ](#) cooperatively with the United Way of Dubuque Area Tri-States, AmeriCorps and the City. This site acts as a volunteer coordinator. Through the use of this tool and regular communications, the City and non-profits work collaboratively to build community capacity, recruit and retain volunteers.

Have there been any challenges this year weather-related or otherwise, the advisors should know about? While not experienced this year, the City of Dubuque implemented a budget-related hiring freeze in 2014 and then again during the pandemic in 2020 that hit the park division hard. Though this event occurred in the past, decreased staffing capacity then has caused the division to spend years “digging out” from minimal maintenance efforts then. During the pandemic 40 seasonal employees were not hired yet all landscapes had to be maintained with usage of parks and outdoor spaces skyrocketing. In landscaped areas this led to weeds taking over and lack of maintenance that is challenging to come back from.

Iowa had a very long spring with cold and rainy weather; thus, planting was late. The community, partner organizations and City organization all are challenged with numerous issues post COVID-19, especially hiring struggles. The Park Division is not fully staffed in full and seasonal positions with the same assets to maintain. The COVID-19 pandemic has affected the country in unprecedented ways, upending traditional

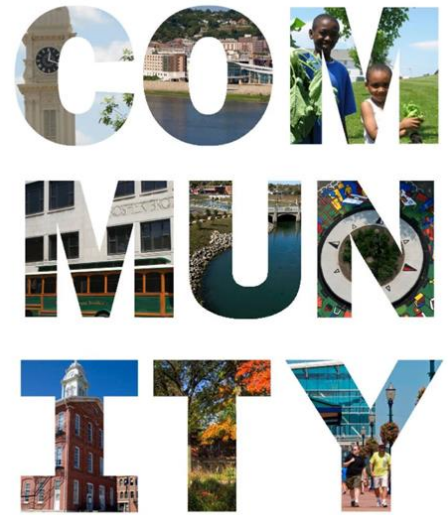


Figure 2 Dubuque's Landmarks

ways of working, living and governing. We've suffered incalculable losses, as the still-high rates of COVID-19 death and infection demonstrate. At the same time, residents turned to public parks and green spaces at rates we have not seen for quite some time as they sought safe recreational opportunities, increasing demand. This imbalance has proved challenging to our staff.

Years participated in America in Bloom National Awards Program: This is the first year.

Introduction to your community (500 words or less): The City of Dubuque is located on the Mississippi River in northeastern Iowa, adjacent to Illinois and Wisconsin. As Iowa's oldest city, Dubuque is a community well known for its historic and architectural beauty. The City's annual and capital budget is over \$198 million and funds a full range of municipal services. The community has a stable and diversified manufacturing base and a growing service sector. Dubuque is the major retail, medical, education and employment center for the tri-state area. Tourism continues to be a major economic force in the community. City government works in collaboration with the private and non-profit sectors to promote economic development and sustainability and create an equitable community of choice for all.

The City Council's vision is Dubuque 2036 is a sustainable and resilient city, an inclusive and equitable community where ALL are welcome. Dubuque 2036 has preserved our Masterpiece on the Mississippi, has a strong, diverse economy and expanding connectivity. Our residents experience healthy living and active lifestyles; have choices of quality, affordable, livable neighborhoods; have an abundance of diverse, fun things to do; and are successfully and actively engaged in the community.

It is said in Dubuque that the secret sauce is partnership, people, and planning. As you will see planning starts many initiatives and projects, people within the city organization, businesses, non-profits join together to help make things happen. Community engagement has become essential to how we develop our projects. Input received allows for truly community projects and initiatives. Partnerships is how it all happens. The real success comes when we all work together to make things happen and that is how it is done here in Dubuque.

Dubuque and its City Council has embraced equity and inclusion. Our path forward is to create an equitable community of choice. To that end an Office of Shared Prosperity and Neighborhood Support has been established and soon a new Division in the city of Community Impact will also be established. You will see much of our work is taking place in our lowest socio-economic neighborhoods. Work is happening to eliminate barriers and disparities among the city's most vulnerable residents. This ensures all resident can share in Dubuque's prosperous future.

We take pride in our beauty – natural and person-made. We enjoy and treasure of our trees, flowers and landscapes. We have been a leader in sustainability and now resiliency efforts. As Iowa's oldest city we held on to our historic nature and preserved it. We are a Masterpiece on the Mississippi.

COMMUNITY VITALITY

OVERVIEW: Participation leads to community vitality. The City of Dubuque developed a comprehensive plan called [Imagine Dubuque 2037](#). Over 6000 people gave input to develop the plan. It is truly the plan of the people and the community. Dubuquers were then involved in the Call to Action with seven categories and 110 recommendations outlined. A [progress page](#) is updated yearly to chart what needs resources, is started, underway or complete. It is guiding our future and our vitality along with City Council's goals and priorities.

Parks and recreation opportunities abound throughout the city, and all is managed by the Leisure Services Department. The city is rich in special events including music, art, sports and more sponsored by numerous

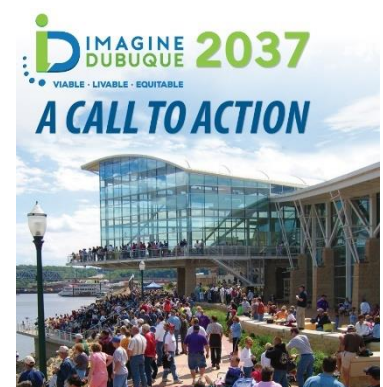


Figure 3 Imagine Dubuque Comprehensive Plan Executive Summary. Click picture for more details!

organizations at the Town Clock Plaza, Comiskey Park, Jackson Park, Historic Millwork District, Port of Dubuque, Eagle Point Park, Bergfeld Recreation Area, Washington Park, and Alliant Amphitheater. The city issues [special event permits](#) with 203 being issued in 2019 and to date 111 this year.

CV.a.01 - Municipal volunteer boards: The City of Dubuque has 22 [Boards and Commissions](#) that provide direct input to the City Council on a variety of topics. The City Clerk's Office and Community Engagement Coordinator, with support from all City departments, have established a work plan to diversify the participation of these commissions so that they are truly representative of our community.

CV.a.02 - Municipality offers grants to neighborhood associations for enhancements: The City Council has long held the belief that residents are vital partners in creating viable, livable and beautiful neighborhoods. To that end, the Sustainability Department offers grants up to \$2500 to any individual or group implementing principles of the Sustainable Dubuque plan, which include Native Plants & Animals, Community Design, Clean Air & Water, and Healthy Local Foods. The City's Office of Shared Prosperity and Neighborhood Support provides grants up to \$750 for projects to formal neighborhood associations and informal networks of residents to implement neighborhood enhancements including but not limited to neighborhood cleanups, plantings, art exhibits, installation of Free Little Libraries, and more.

CV.a.03 – Green space/parks master plan: The City Council prioritized creation of a parks master plan during their 2021-23 annual goal-setting process. Funding for this plan is included in the Fiscal Year 2023 budget, and the plan is estimated to be completed by July of 2023. Individual park plans such as [RelImagine Comiskey](#) have been developed for specific parks.



Figure 4 Baseball game at Miracle League of Dubuque

CV.a.04 - ADA accessibility in public areas and other programs for inclusion: In 2016, the city completed Phase I of an ADA assessment for its facilities. Implementation of the recommendations of that assessment continue, including the hiring of a Facilities Manager in 2021 to coordinate efforts. The Housing & Community Development Department also employs a Building Inspector whose primary responsibilities include ADA inspection and technical assistance for public and private buildings across the community.

Miracle League Complex includes an all-inclusive playground, hard surface ballfield and a 100% accessible building with programming rooms, quiet room and family style bathrooms. Miracle League of Dubuque partnered with many donors and organizations to fundraise and establish the Miracle League complex which opened in 2021. Leisure Services has special population programming. The community organizations providing specific inclusion programming include Dubuque Community Schools, Hills and Dales, Area Residential Care, Ark Advocates, Sunnycrest, Cozy Corner, Unified Therapy, Goodwill, and Albrecht Acres. Annually the Winter Special Olympics is hosted here in Dubuque. The Miracle League of Dubuque for the second year will host Miracle League Games hosted by Fox Sports connected with Major League Baseball Field of Dreams game featuring the Cubs and the Reds in August.

CV.a.05 - Promotion of alternative transportation: Created in 2006 by a community task force, the Sustainable Dubuque initiative includes *Reasonable Mobility: Safe, reasonable, and equitable choices to access, live, work, and play opportunities* as one of its twelve principles. The initiative continues to be implemented by the community, with many partners working together to create and encourage alternative forms of transportation. Most recently, the City of Dubuque initiated a Commuter Allowance program for its own employees which provides the same incentive for biking, walking, taking public transit or carpooling to work as is provided for those driving. The city also works with partners to promote use of public transit ([Jule](#)) and biking through its Rack & Ride program, and use of our trails and public sidewalk system. A smart parking and mobility management plan process is set to begin in the next two months.

CV.b.01- Describe outdoor recreation facilities meet community needs: The City has 49 developed parks which are maintained by the Park Division. Play areas include volleyball, pickleball, tennis and softball/baseball fields, playgrounds, dog park, disc golf, horseshoe pits and more. The Leisure Services Department also maintains the 18-hole [Bunker Hill Golf](#) course, [Miller Riverview Campground](#) along the River, [Port of Dubuque Marina](#) and well as 2 municipal pools. Boat ramps to access the Mississippi River are located on Chaplain Schmitt Island as well as AY McDonald Park. 98% of Dubuque residents live within a 0.25 mile walk of a park, with our goal to provide equitable access to green space to all residents as the parks system is a neighborhood parks system. Dubuque is a part of an established [water trail](#).

The Dubuque Community School District makes all of its outdoor play areas available to the public as park spaces outside of school hours. Cottingham and Butler, a private company, designed, built, and maintain a pocket park in downtown Dubuque that is available to the public. Unity Point Health – Finley Hospital leases the Cancer Survivor Park from the City, and they maintain it as a public park.

CV.b.02 - Walking, biking, and exercise trail network: The community has over [31 miles](#) of trails that connect at the city limits to the 26 miles of former rail ROW called [Heritage Trail](#) which ends in Dyersville. Lighted portions of trail are in the North-End and Washington Neighborhoods, Bee Branch, and Port of Dubuque. The City Council has provided funding in this fiscal year to complete an updated trails plan.

CV.b.03 - Performances/events for art, dance, theatre, music, and/or cinema: The city is rich in arts and cultural event centers including [Grand Opera House](#), [Five Flags Civic Center](#) including its historic theater, [University of Dubuque Heritage Center](#), [Q Casino Showroom and Backwater Stage](#), Dubuque [Museum of Art](#), Mississippi Moon Bar at the Diamond Jo Casino and two cinemas. The Dubuque Arboretum and Botanical Garden annually hosts for thirteen Sundays a Summer in the Gardens series hosting 1,000 to 2,000 attendees per night amongst many other local music venues.

CV.b.04 – Run/walk/bike/kayak/canoe events are held: The last two years the city has sponsored Pollinator Week and this year that included dedication of a trail underpass under a very busy railroad and Mayor’s bicycle ride. Annually Dragon Boat Races are held on the Mississippi River. Dubuque County Conservation hosts canoe/kayak events on the Mississippi and on Catfish Creek in Dubuque. Triple D (Mountain) Bike ride, Winter Iowa Games Road Race, Mines of Spain 100, Table Mound 5K/Fun Run, Grandview Gallop, Heart Walk, Dubuque Benefit Classic – Half Marathon & 5K have all happened already in 2022.

CV.b.05 - Benches and seating available near walking, exercise, and playground areas: Benches are throughout the most visited and scenic areas of our community – throughout downtown, Washington Park, Port of Dubuque, Historic Millwork District, Bee Branch, Eagle Point Park and more.

CV.b.06 - Structures, shade sails, or trees provide shade for spectators and/or participants: Trees provide shade throughout the many public spaces and near playgrounds and along trails. Pavilions are in the largest three parks providing shade for events and activities with 25 total in the system. Shade structures adorn the Miracle League Complex.

CV.b.07 - Play areas exist, age-appropriate equipment, ADA compliant and conform to CPSC and inspected by CPSI: Over 285 pieces of play equipment exist in the system that are for 0-5 and 5-12 however used by all ages. The systems conform to CPSC and the department has two CPSI. Structures at time of installation were ADA compliant however many do not have an accessible pathway.

CV.b.08 - Public library/resources center/programs: [Carnegie Stout Public Library](#) features not only books but a maker space, book clubs, art exhibitions, a recording studio, and a mobile bike library for specific neighborhoods. Throughout the year the library offers [programs for all ages](#). Dubuque is home to 14 registered Free Little Libraries in parks, at schools, private properties and more.

CV.b.09 - Describe the community center: The [Multicultural Family Center](#) offers cultural programming and events, a robust teen program and serves as a welcoming community center for all. The Multicultural Family Center envisions an equitable and inclusive Dubuque built on a foundation of understanding and collaboration across all cultural groups committed to producing engaged families and community members. The Center serves as an inviting and safe place for community members, stimulates connections, and provides programs to foster civic engagement and social and economic success. The [Dubuque Community YMCA/YWCA](#) provides another community center focused on youth development, healthy living, social responsibility, eliminating racism, and empowering women, strengthening communities is our cause.



Figure 5 Discover Your Roots at Multicultural Family Center

CV.b.10 - Farmers' Market(s) location and frequency: Dubuque is home to the oldest continuously operated farmers market in Iowa. Every Saturday from May through October Dubuque Farmers Market located on upper Main District near City Hall is operated by Dubuque Main Street. Monthly markets in the Millwork District and lower Main Street expand access throughout the week. Every Saturday from November to April Winter Farmers Market is located at the Kennedy Mall.

CV.c.01 - Community gardening sites: A number of different community gardens provide various formats for residents to connect and grow their own food. The Dubuque Rescue Mission Garden, Westminster Presbyterian Church Garden, Sinsinawa Mound Collaborative Farm, Four Mounds Community Garden, St Luke's Methodist Wading Pool Garden Project, Bee Branch Community Orchard, Washington Neighborhood Garden and Valentine Community Garden are all managed by organizations and residents passionate about healthy local foods. [Convivium Urban Farmstead](#) promotes and lives eating local and feeding local through classes, demonstrations, and experiences that use food to foster connection to ourselves, our community, and our environment in a neighborhood identified as a food desert by the USDA. Visit https://dbqcommunitygardens.com/find_a_garden/ For more information on Dubuque's urban agriculture initiatives.

CV.c.02 - Level of participation in food banks, hunger-relief, etc.: [Project Rooted](#) is connecting kids to real food, from the ground up to help everyone access fresh produce. Convivium Urban Farmstead began making free casseroles to give away to those in need using excess garden produce during the pandemic and that initiative has continued today. [Dubuque Rescue Mission](#) serves meals every day and has a community farm. St. Stephens Food Bank, Dubuque Area Labor Harvest, The Dubuque Food Pantry, Dubuque Rescue Mission, Salvation Army, Hope House Catholic Worker, St Vincent de Paul. St Lukes United Methodist Church offers hot meals on Saturdays. Multicultural Family Center, Third Presbyterian, Holy Trinity and St Joseph the Worker offers food Pantries at various days and times. A Crop Walk is sponsored each year. The city also allows urban hens in residential neighborhoods.

CV.c.03 – Participation in civic events such as Bike to Work Days, Walk to School Days: The City and non-profits have used their designation as a Silver Community through the Bike-Friendly Community designation program to learn about our strengths and opportunities and plan for the future. Bike to Work Week initiatives are promoted and sponsored by Dupaco Community Credit Union who encourages alternative modes of transportation to get to work, while the Dubuque Bike Coop provides low-cost access to bikes and educational classes throughout the year to increase access and confidence in biking as a mode of transportation.

CV.c.04 - Voluntary (non-mandated HOA) neighborhood organizations in place: Dubuque has active neighborhood organizations including the Point, North End, Washington, Historic Bluffs, Downtown and Langworthy District. Four other small neighborhoods sponsor a summer block party.

CV.c.05 - Programs to encourage youth involvement: [The Leisure Services Department offers](#) creative classes, free neighborhood programs, youth sports, swim lessons, golf instruction, Bee Branch nature programs, and other programs available to Dubuque families as the cornerstone of youth activity in our community. Summertime alone we offer more than 100 different titles for classes and activities offered and throughout the year more than 200 different offerings. The Community Foundation of Greater Dubuque YAPPERS, Multicultural Family Center and the Carnegie Stout Public Library all have youth involved in service as well as organized leadership opportunities in addition to programming. Holy Family Schools require increasing hours of service from their students through senior year and the public school encourage service. The Multicultural Family Center offers the Summer Teen Empowerment Program (STEP) that includes service-learning based program focused on developing life skills with an emphasis on community building, teamwork, social, and emotional learning. Children's Spring Party annually sponsored by the Dubuque Arboretum and Botanical Garden, in addition to Sundae's in the Garden hosted by them they also allow youth to become involved and connected.

CV.c.06 - Recognition programs for volunteers: [National Service Recognition Day](#) is held in September. Each year a ceremony is hosted by the Mayor with presentation of awards to volunteers. Dubuque volunteers with long standing or exemplary service are nominated for the [Governor's Volunteer Awards](#) each year which in 2022 recognized 9 local individuals and one group. A volunteer recognition coffee and donuts with our DBQ Shovel Crew volunteers this year.

FLOWERS



Figure 6 City of Dubuque's 10,000 sq ft Greenhouse

OVERVIEW: The City of Dubuque is proud to have a city owned greenhouse and Horticulture staff as a part of the Park Division. The Division hangs over 350 flower baskets in the Historic Millwork District, along the Port of Dubuque Mississippi Riverwalk and in the Bee Branch Creek Greenway. There are many landscaped areas that the park division is responsible for including City owned buildings, gateways and corridors, parks and Main Street.

The greenhouse typically grows over 50,000 plants throughout the course of the summer to plant in all these various areas. All the annual plantings are accomplished by the Horticulturist, three assistant horticulturist, and seasonal staff.

FL.a.01 - Public or private management of flower displays: The City's Horticulturist selects all the plants that will be grown for the annual planting beds and hanging baskets each season. All the landscaped beds are planted and maintained by the Horticulturist team. The Mississippi Riverwalk baskets are watered through the partnership with the Public Works Department. The department also distributes annual flowers to other City Departments such as the Fire Department, and the Water Department. Neighborhood Associations are also encouraged to receive plants from the city's greenhouse to enhance their neighborhoods.

FL.a.02 - Program to encourage, expand understanding and importance of pollinator habitats: In 2016, the city engaged residents to develop an Integrated Pest Management program with the goal of reducing pesticide use in City facilities to protect the health of humans and animals. Today, 11 or 42 parks are designated as pesticide-free, with the goal to increase this number slowly and continuously. The city currently has three registered monarch waystations located in our parks. Recently 11 acres of turf was converted to native prairie in a park to reduce mowing practices restore the natural landscape and promote pollinator habitat. For the first time this year, Dubuque partners participated in Pollinator Week with a full week of arts, education, and educational events created to increase awareness about

pollinators. Dubuque County Conservation also has a Mowing to Monarchs program to financially assist property owners with planting small patches of prairie and provide educational resources.

FL.b.01 - Action plan developed each season for procurement, scheduling, plant and maintenance of flower displays: The city's horticulturalist develops and leads the action plan for procurement, scheduling, planting and maintenance of public flower displays.

FL.b.02 - Recognition program(s) for business and/ or residences: There are currently no recognition programs related to flowers for businesses or residences.

FL.b.03 - Demonstration/display garden(s) with labeled flowers: The city has a lease agreement and a partnership with the Dubuque Arboretum and Botanical Gardens. The Arboretum which has been a part of the Dubuque community since 1980, the 56-acre Dubuque Arboretum & Botanical Gardens features more than 60 different types of gardens. All volunteer-created and all volunteer-maintained, its grounds continue to grow and expand year after year. The city is also participating in the All-Americas Selection program this year and have two public display beds.

FL.b.04 - Effective communication about selection and care of flowers and pollinator habitat: The Horticulturist holds an annual class in the spring through the Recreation Division to provide the community with important information about care of flowers. City's design review LA.e.02

FL.c.01 - Unity and Variety: plant combinations create visual interest and dramatic effect while appearing coordinated: The Horticulture staff has transformed what used to be mostly petunias and marigolds to stunning plant combinations that do create interest and effect in beds, containers and flower baskets.

FL.c.02 - Suitability of Plant Selections: plants selected for location and environmental conditions The staff select specific species depending upon location, soils and sun conditions. They grow and try new varieties experimentally before using in the system.

FL.c.03 - Distribution: displays found throughout the community: The majority of the displays are in the eastern one-third of Dubuque from the bluff east and along Highway 20.

FL.c.04 - Location: displays are located to serve as focal points: The entrance signage for Dubuque in various locations and the Port of Dubuque serve as focal points. The flower displays are captured by photo and used extensively by Travel Dubuque, Dubuque Area Chamber of Commerce and Greater Dubuque Economic Development.

FL.c.05 - Seasonal Displays: seasonal displays with spring, summer, fall, and/or holiday displays: The season of spring begins with planting pansies and other early spring varieties in high profile beds. Summer has annual beds that change each year in their colors and varieties of flowers then in the fall mums are planting in high profile areas to showcase the fall colors. A second season of baskets is hung along the Port of Dubuque beginning around Labor Day.

FL.c.06 - Scale: if hanging baskets are in use, their size is in scale to their surroundings: The size of containers were chosen for the scale needed.

FL.c.07 - Scale: if containers are in use, their size is in scale to their surroundings: Containers are selected that are in scale to their placement and surroundings.



Figure 7 Park Division crew hanging one of 350 baskets in the Port of Dubuque

FL.c.08 – Scale: inground flower displays are designed with mature plant heights in mind: Our horticulturist and team plan with this in mind.

FL.c.09 - Color: pleasing color combinations (monochromatic, analogous, and/or complementary) are used: Our horticulturist and team plan with this in mind.

FL.c.10 - Form: uses a number of different textures in all floral displays: Our horticulturist and team plan with this in mind.

FL.d.01 - Watering procedures to maintain growth in place: The parks division waters and fertilizes baskets and beds as needed based upon the rain and need. Certain areas are irrigated, Bee Branch baskets are irrigated, and additional funding is in the budget to add more irrigation to areas.

FL.d.02 - Fertilization: appropriate fertilization procedures using slow-release, liquid fertilizers, and/or soil amendments: The horticulture staff uses all these methods and continues to research new methods to assist in the health of our plants throughout the system.

FL.d.03 - Grooming: regular pruning, dead-heading, removal, and replacement of dead plants: The horticulture staff maintains plants. Plant selections go mostly to those that do not have to be dead-headed. Dead plants are removed and in perennial beds replaced or divided to replace.

FL.d.04 - Plant health and display strategies: The Horticulturist monitors plant health both in the greenhouse while propagating and out in the field once planted. Natural practices including beneficial insects are used in the greenhouse to control plants issues reducing the need for pesticide use.

FL.d.05 - Health and Vigor: plants are robust and floriferous: Each given year the health and vigor are dependent on many factors. During the tour one will see how it is this year.

FL.e.01 - Volunteers donations and/or participation: The Dubuque Arboretum and Botanical Gardens had 23,797 hours of volunteer time donated in 2021. Master Gardeners work extensively there however also complete projects throughout the community.

FL.e.02 - Civic groups, garden clubs, Master Gardeners, and /or school floral-related programs and efforts: Dubuque County has a very active master gardeners' program. Master Gardeners hosts a tour annually that is attended by many community members. Dubuque Arboretum and Botanical Gardens hosts HerbFest annually which is a culinary community event.



Figure 8 Mayor and City Council plus the Assistant City Manager volunteered at the National Mississippi River Museum & Aquarium for Dubuque Days of Caring to help with landscaping and preservation.

LANDSCAPED AREAS

OVERVIEW: There are over 15 acres of landscaped areas that are maintained by the Park Division. These areas include gateways, corridors, city owned buildings, roundabouts, median strips, business park areas, and various other locations throughout the city.

LA.a.01 - Management of planting public landscaped areas: The city's park division manages the bulk of the publicly owned landscaped areas throughout the city. The city's Transportation Department also has landscape area responsibilities. Some native landscaped areas are managed by a private contractor. The City of Dubuque prides itself on the beautification of city facilities including

parking ramps and parking lots. Landscapes brighten entrances and provide welcoming eye appeal to the citizens and the visitors. Some landscapes also perform as stormwater detention such as the bioretention cells at the Iowa Street Parking Ramp. Two newer roundabouts are landscaped and provide pops of color throughout the growing season and the grasses provide interest in the winter.

LA.a.02 - Municipal landscape ordinances: The city has a street tree and landscaping on public right-of-way policy.

LA.b.01 - Planning for restoration of natural areas and management of invasive plants: See FL.a.02. City staff are certified to treat invasive plants. Natural areas are typically installed by contractors. Some maintenance is also performed by a contractor. Each new park development considers natural area or native plant installations. Comiskey Park development will have native areas throughout the landscape.

LA.b.02 - Strategy for management of invasive plants: A request was made in the last budget request and not funded however will be asked for again to establish areas of and descriptions of invasives, methods and resources needed to manage invasive plants.

LA.b.03 - Demonstration/display gardens: See FL.b.03

LA.b.04 - Communication of “Right Plant in the Right Place” and/or other plant issues: The city's Horticulturist and Urban Forester are constantly educating themselves about the “right things in the right places” and sharing that knowledge.

LA.b.05 - Recognition program for attractive landscapes: The City does not have a recognition program for attractive landscapes.

LA.b.06 - School gardening programs: Lincoln School has begun a school garden program. Since school has no persons present during the growing season during June-mid August this program is difficult to establish.

LA.c.01 - Unity and Variety: plant combinations create visual interest while appearing coordinated: Landscape beds are planned with a variety of plant combinations to create interest.

LA.c.02 - Suitability of Plant Selections: plants selected for location and environmental conditions: Our horticulturist and team plan with this in mind.

LA.c.03 - Distribution/Locations: landscaping found throughout the community and at key locations: The majority of the landscape areas are in the eastern one-third of Dubuque from the bluff east, at community entry signs, and along Highway 20.

LA.d.01 - Grooming: pruning of plants, removal and/or replacement of dead plants: The horticulture staff maintains plants. Dead plants are removal and replaced as time and funding allows.

LA.d.02 – Plant Health: Plants display health and vigor, and Integrated Pest Management (IPM) strategies in place to monitor and manage diseases and pests: The Horticulturist monitors plant health and follows the adopted IPM. She continuously monitors pests. Plant varieties are chosen and/or changed out to manage diseases and pests.

LA.d.03 – Mulch from renewable and sustainable sources is used by the municipality in appropriate places: Mulch is used in most of the landscape beds.

LA.d.04 - Weed Management: strategies in place to manage weeds (removal, mulching, etc.): Mulching is used exclusively throughout most landscape beds. Herbicides are used as necessary and

hand weeding is prioritized in the high-profile areas.

LA.d.05 - Health and Vigor: plants are robust: See FL.d.05.

LA.d.06 - Turf Care: proper mowing, edging, and replacement of dead turf: The parks division along with their contractors mow the grass. Edging is limited to high profile area. Struggling or dead turf is reseeded in the spring and fall.

LA.d.07 - Turf Health: Grassy areas display health and vigor, and procedures such as Integrated Pest Management (IPM) are in place to monitor and manage diseases, pests, and weeds: Only two areas are sprayed for weeds. The city developed and adopted an [Integrated Pest Management Program](#) in 2016. The program includes the adoption of 15 pesticide free parks. A notification system was also created so the community can be notified where City staff might be spraying chemicals during a specified date range. Park Division staff are certified to apply pesticides. In addition, a private business called Goats on the Go has been used by the City, non-profits, private businesses, and even Clarke University in order to control weeds and invasive. Only two park areas are treated for weeds creating many pollinators in the spring.

LA.e.01 - Volunteer activities related to landscaped areas and turf: The City has an [Adopt-A-Spot](#) program where community members can adopt an area for 1 year and help with type of maintenance related to that area. It could include weeding, litter control or other beautification practices.

LA.e.02 - Community educational programs related to Landscapes: Dubuque County Conservation is the sponsor of [Mowing to Monarch](#) to promote native landscapes for homeowners. Iowa State University Extension and Outreach in Dubuque County also provide programs related to landscapes and manages and trains Master Gardeners.

URBAN FORESTRY

OVERVIEW: Dubuque has beautiful natural tree covered bluffs next the Mississippi. The city has a Forestry Activity in the Park Division. The Forestry activity is responsible for trees in the city right-of-way, in parks and on all other city owned properties. Street tree planting is a part of Unified Development Code. Emerald Ash Borer (EAB) has been the primary focus of the forestry activity with 1750 city owned trees being ash. The city has removed over 1100 trees since 2015 and an additional 300-400 trees are being chemically treated for EAB.



Figure 9 Dubuque Trees Forever and volunteers

UF.a.01 - Identify personnel on staff or accessing trained individuals such as arborists and/or urban foresters: The city currently has one Urban Forester, two Forestry Technicians and hire two temporary summer employees to help with tree maintenance activities. The retired Urban Forester is still very active in the community continuing to share his expertise.

UF.a.02 - Tree board/commission/department and activities: Dubuque Trees Forever is a 501c3 non-profit organization that is working to replant and maintain healthy city trees. They plant trees to beautify and strengthen neighborhoods and provide health and environmental benefits to the Dubuque community. The Parks and Recreation Commission provides input on tree planting plans and forestry activities. Dubuque Trees Forever along with a large group of volunteers, plant trees for this widely observed day.

Dubuque Trees Forever continues to grow its volunteer core that helps to plant and assist with maintenance projects like mulching and are discussing opportunities to volunteer in the removal of invasives.

UF.a.03 - Municipal ordinance(s) enacted/enforced for tree preservation on public and/or private property and policy for ID and protection of historic trees: The City has a [Street Tree and Landscaping on Public Right-of-Way](#) policy that is used for all tree related issues. The policy is currently being updated to reflect new policies and procedures.

UF.a.04 - Municipal ordinance(s) enacted/enforced for protection of trees during construction: This is done through a tree policy and review during Design Review of development as well as the Unified Development Code. Credit is given in sustainable development for protection of forested areas.

UF.a.05 - Currently a Tree City USA community The city has been designated as Tree City USA for over 20 years. A local college - Clarke University has been recognized as a Tree Campus USA by the Arbor Day Foundation. In 2021 they celebrated ten years of recognition. In addition, Clarke University prides themselves on the landscaped features of the campus including baskets that line Clarke Drive.

UF.b.01 - Tree inventory: The city currently has an inventory of all ash trees in a geographic information system also known as GIS in collaboration with the GIS Specialist/Coordinator. The last comprehensive tree inventory was in 2010.

UF.b.02 - Annual tree planting program for public areas: The city currently has funding in its operating budget and capital improvement budget for tree planting and replacement. Trees are planted in the spring and fall seasons. In 2021 over 220 trees were planted throughout the community with the help of Dubuque Trees Forever. That partnership will continue to grow, and more trees will be planted in 2022 and years going forward due to the City Council's commitment in the budget to fund more tree planting in this and coming years.

UF.b.03 - Management strategies for tree health and removal of dead, imperiled, and invasive trees in public areas: The Urban Forester inspects trees for health and other concerns. Street trees and trees planted on publicly owned properties are the highest priority. Trees on undeveloped rights-of-way and properties are the lowest priority. The ordinances allow for the city to direct removal of private trees that could cause harm to life and limb.

UF.b.04 - Policy in place for identification and protection of historic trees: We do not have this policy.

UF.b.05 - Communication to residents of tree-related issues: City staff maintains a [trees page](#) on the city's website. This provides current and up to date information related to tree issues or concerns. A special page was developed and promoted related to Emerald Ash Borer. In addition, occasionally information is shared on the City of Dubuque Leisure Services Facebook page, information brochures are left on local doors, and emails are sent.

UF.c.01 - Variety: current practices include appropriate selection and diversity of tree species being planted: Because we did not learn after Dutch Elm disease and many ash trees were the replacements that have been devastated by Emerald Ash Borer the city has in its new plantings been focusing on species diversity.

UF.c.02 - Placement: current practices include appropriate spacing and planting area for optimal root and canopy growth: Correct practices are used in any city plantings. More education is necessary for the private plantings that take place at times.

UF.c.03 - Planting: current practices include correct tree planting depth (trunk flare at/above grade): Correct practices are used in any city plantings and specified and inspected for contractors as well.

UF.c.04 – Arboretum/Park in place with labels and descriptive signage: Dubuque Arboretum and Botanical Gardens has labels in place and signage for trees and plants.

UF.d.01 - Tree health: strategies in place to monitor and manage diseases and pests: The Forestry crew attends trainings each year to learn new diseases and pests and monitors the urban forest. If treatment methods are available, they are employed.

UF.d.02 - Watering, mulching, and pruning for new trees: procedures for watering and proper mulching (i.e., no volcano mulching) in place and effectively communicated to the public: Before every Dubuque Trees Forever planting is done an education session about proper planting is held which assists in training more people in correct methods of tree planting and mulching.

UF.d.03 - Pruning for established trees: appropriate pruning, removal of dead limbs, and canopies raised adequately above vehicle and pedestrian areas: The parks division forestry activity completes these tasks.

UF.e.01 - Policy for donations to tree planting in public areas (memorial trees, etc.) in place: We do have a policy in place however suspended it during COVID and as we finished the removal work of Emerald Ash Borer. Later this year we will open the practice again.

UF.e.02 - Community participation in Arbor Day or other tree-related activities: The City partners with Dubuque Trees Forever to hold an Arbor Day event as well as other community events throughout the year. Trees Forever also accepts the Mayor's Proclamation each year. Trees Forever has a booth annually at the farmers market and the Sustainability Fair to provide information and education about the importance of trees.

UF.e.03 - Volunteers assist in tree planting and/or care: A web-based citizen inquiry program is used by the public to report tree issues or concerns. The city's web page also has information about tree requests and other helpful links.

ENVIRONMENTAL EFFORTS



Figure 10 2022 Sustainability Fair - Community members learned other uses for older clothes

OVERVIEW: The City of Dubuque has been a longtime leader in environmental efforts. The city established Iowa's first staffed Sustainability Department which deals with many aspects of environmental efforts. One of City Council's goals is Sustainable Environment: Preserving and enhancing natural resources. Sustainable Dubuque is a holistic approach to making Dubuque more sustainable through a three-part approach that addresses environmental and ecological integrity, economic prosperity, and social and cultural vibrancy. Each year the city hosts the Growing Sustainable Communities Conference, where almost 500 people from 27 states attend to educate, inspire, and collaborate on growing sustainable communities.

The Dubuque Metropolitan Area Solid Waste Agenda (DMASWA) opened a \$10 million landfill gas energy project which involved the construction of infrastructure and a gas processing facility for the beneficial

capture of landfill/methane gas created at the landfill. Over 60 gas collection points/wells at the landfill “feed” the facility where the landfill gas is processed into pipeline-quality, renewable, natural gas and is then pumped into the Black Hills distribution system for use by local customers. CO₂e emissions were 39,424 tons in 2016. With the RNG plant coming online in 2021, the DMASWA reported CO₂e emissions were reduced to 13,709 tons, a reduction of 25,715 tons or 65% from 2016 base year.

Private businesses, the City and Alliant Energy installed two solar farms. One, in the Port of Dubuque serves as a demonstration and learning solar field while producing renewable energy. The other, larger farm has 15,000 panels and produces enough solar energy to power 700 homes. The City also funded the creation of a solar program for low-to-moderate income households – the project began with 10 homes and will add an additional 20 homes in the coming fiscal year.

EE.a.01 - Environmental Advisory Board(s) and/or Green Team(s): These include Green Dubuque, the City of Dubuque Resilient Community Advisory Commission, Catfish Creek Watershed Board, and Green Iowa AmeriCorps – focused on Energy Efficiency and Environmental Education. Annually the Green Iowa AmeriCorps sponsors and puts on the Sustainability Fair located at the Bee Branch which averages over 200 attendees. Each Dubuque high school has a student-led green team which lead efforts at the respective high schools and lead efforts related to waste reduction, solar energy, and campus lawn restoration. The Dubuque College’s Sustainability Coalition brings together the 7 higher learning institutions in the area to work collaboratively to advance environmental goals throughout the city and on campuses.

EE.a.02 - Electric/alternative fuel vehicle(s) used by municipality: In December 2020, Dubuque’s City Council voted unanimously to consider a valuation to apply to the vehicle total cost of ownership (TOC) as related to the social cost of carbon, set at \$30/MtCO₂e in accordance with the City of Dubuque’s 50% by 2030 Community Climate Action & Resiliency Plan (50% by 2030 Plan) to advance fleet electrification. Additionally, the City’s administrative policy on vehicle purchasing was updated to not only incorporate the value of carbon emissions and reductions in the TOC calculations, but also to require departments to prioritize electric vehicles when procuring new vehicles for the City fleet.

These two policy changes combine to advance fleet electrification throughout city operations and stem from actions listed in the City’s 50% by 2030 Plan. Ongoing policy and procedural improvements to the way the City operates advance climate action, and the city is working to prepare staff for policy implementation.

The city’s Public Works Department has a hybrid gas/CNG pickup truck, a CNG Heavy duty dump truck and a CNG F-450 truck. The city’s [Jule Transit System](#) has purchased its first electric bus and has submitted grants to purchase additional electric buses. The purchase of the buses coincides with efforts to install electric vehicle charging infrastructure at the Jule Operations Transportation Center.

EE.a.03 - Electric vehicle charging station(s): The City has 2 level two electric vehicle charging stations in one parking ramp and 3 “trickle” chargers in another. HyVee, a local grocery store has 8 charging stations available at one of its locations. There are also 3 charging stations available at the Hotel Julien Dubuque and chargers at local dealerships are generally available to the public. The City recently secured grant to install its first DC Fast Charger this summer at the Port of Dubuque.

EE.a.04 - Stormwater management policies: The city’s Engineering Department manages stormwater within city limits. A stormwater utility was established by the city to assist in funding improvements throughout the city. A stormwater management plan is in place with a stormwater utility fee to ensure appropriate resources are available to manage storm water. The Catfish Creek Watershed authority tackles concerns with water quality and flood with half of Dubuque in this watershed. Dubuque has been progressive in reconstructing 80 alley into green alleys many in our most economically challenged neighborhoods. The [before and after is stunning](#). Six presidential disaster declarations led to the [Bee Branch Watershed flood mitigation project](#) (\$250 million project) which is successfully managing

stormwater. A Department of Housing and Urban Development (HUD) Bee Branch Healthy Homes grant of \$31.5 million that was just completed provided for disaster resiliency for homeowners in the watershed through a resiliency program as well as stormwater infrastructure improvements in our lowest socioeconomic neighborhoods.

EE.a.05 - Pet waste policies in place and enforced: The city has an ordinance that dog owners must pick up after themselves enforced by the Health Services Department. There is a total of 30 current pet waste stations, and they are in 21 parks and along popular trails.

EE.b.01 - Sustainability Action Plan: [The City's Community Climate Action and Resiliency Plan](#) is a community-wide plan to reduce greenhouse gases 50% of 2003 levels by 2030. The Dubuque Climate Action Plan adopted in 2013 and updated in 2020 lays the foundation for the city's efforts to reduce its greenhouse gas emissions and improve its resilience to future impacts of climate changes on its environment, infrastructure, and people.

EE.b.02 - Education about environmental efforts: The Teen Resiliency Corps is a partnership between the Multicultural Family Center and Sustainable Dubuque to address community needs related to sustainability and resiliency. Green AmeriCorps sponsors a Sustainability Fair each year. Green Drinks sponsors environmental education sessions. GIA Sustainable Schools also is involved in education. The city through its newsletters and publications continuously educates on many of these efforts outlined.

EE.b.03 - Effective notification to community regarding pesticide applications: See LA.d.07.

EE.c.01 - Bio-swales and/or rain gardens to reduce stormwater run-off pollution in place: There are bio-retention basins located in Eagle Point Park, at the JULE operations and training center, Been Branch and the intermodal center. The city also has a [cost sharing program](#) for residents to make stormwater improvements to their property including rain gardens and bio-swales.

EE.c.02 - Home energy audit/incentives available: Alliant Energy and Black Hills Energy have audits and incentives available. Green Iowa AmeriCorps assists with energy audits and improvements in low-income households if requested.

EE.c.03 - Effective and efficient waterwise irrigation in place: Many irrigation systems installed throughout the city have a rain gauge installed to measure rainfall to turn off irrigation systems when needed including Bunker Hill Municipal Golf Course.

EE.c.04 - Low-flow water device incentives available: The utility companies have a program for this. Green Iowa AmeriCorps assists low-income families with installation of low flow devices, energy efficiency improvements and new bulbs.

EE.d.01 and EE.d.02 - Residential curbside trash collection and recycling is available and/or required: The city collects curbside trash and recycling. It has robust electronics, [glass](#), [CFL](#), [food waste](#), [yard waste](#), and [recycling program](#). They also have a large item pick-up program.

EE.d.03 - Recycling containers available in public areas and for private use and standardized and/or consistent labels used on containers: Recycling containers are installed in new parks and as replacements are completed in other park areas. The standard recycling symbol is used. The city issues yellow recycling containers for recycling collection.

EE.d.04 - Yard waste composting: The Dubuque Metropolitan Area Solid Waste Agency (DMASWA) uses its food waste and yard waste to make compost at its on-site compost facility. There are several locations where community members can get free compost at self-load bunkers. Larger quantities are available at the facility for a fee.

EE.d.05 - Prescription drug drop-off(s), hazardous waste and plastic bag/foam container collection points: Dubuque County Law Enforcement Center has a prescription drug drop off location and holds an annual drop-off program. The Veterans Freedom Center collects refundable bottles and cans.

EE.d.06 - Hazardous waste and/or electronics waste collection or drop-off(s) available: A household [hazardous and electronics collection program](#) is offered by Dubuque Metro Area Solid Waste Agency.

EE.d.07 - Plastic bag and/or foam container collection point(s) available: Plastic bag collection is at HyVee and Walmart. No known foam container collection points.

EE.d.08 - Reuse opportunities are available (clothing, books, household goods, repair initiatives, etc.): The community boasts environmentally partners focused on waste reduction and reuse such as a Habitat ReStore, Mission Store, Goodwill, Stuff, Etc., Discovery Shop, and St. Vincent De Paul – all of which diverts waste by giving used items new life. The non-profit Oh Happy Play was established to collect gently used toys and redistribute them to those in need. Books are donated to the Tri-State Blind Society and the Carnegie Stout Public Library accepts donations of books and has books sales.

EE.e.01 – Community events that enhance public awareness of environmental issues and distribution of information on effective recycling (lack of contamination), i.e., Earth Day participation: The City's Public Information office as well as the city website, features information about recycling. The city does videos and social media posts to increase awareness of recycling.



Figure 11 Valentine Community Garden - getting some water from a local helper

EE.e.02 - Garden clubs, Master Gardeners, and/or Soil and Water Conservation District, etc. provide educational opportunities for rain barrel usage, backyard habitats, and other environmental initiatives: Dubuque County Conservation hosts education as well as hands on workshops related to rain barrel use and many forms on environmental initiatives. The Mowing to Monarchs program is in its second year.

EE.e.03 - School curricula programs and events to encourage youth involvement: Dubuque County Conservation partners with Dubuque Community School District connecting children to and educating them about outdoors and the environment. The National Mississippi River Museum holds programs and camps to educate and encourage kids to get

involved in the environment and perform outreach educational activities throughout Dubuque. A greenhouse on site grows native grasses and forbes with assistance of young people and then distributed for planting in the community. Currently the River Museum has the exhibit Forever Forest. Dubuque County Conservation staffs and provides interpretation plus outdoor and environmental programs in a new partnership which also includes the Iowa Department of Natural Resources and the Friends of Mines of Spain at the EB Lyons Interpretive Center which is owned by the City.

CELEBRATING HERITAGE

OVERVIEW: The community's commitment to historic preservation began in the mid 1970's as the community reacted to the wholesale clearance of downtown blocks through urban renewal programs. As a result of the foresight of early leaders, Dubuque has one of the largest collections of historic building stock in Iowa. The community's commitment continues today and into the future with our focus on sustainability and resiliency.

CH.a.01 - Historic preservation ordinance(s): Title 16 of the City of Dubuque's Code of Ordinance Chapter 10 has the Historic Preservation Commission establishment and duties as well as historic preservation procedures. https://codelibrary.amlegal.com/codes/dubuqueia/latest/dubuque_ia/0-0-0-16508

CH.a.02 - Incentives offered to promote preservation: tax credits, waived permit fees, eased

setbacks, rebates, etc. The most sustainable building is the one that is already built. Over \$63 million in State Historic Tax Credits has been reserved to assist in the rehabilitation of 45 historic properties.

CH.a.03 - Historic Preservation and/or Architectural Review Board: The City of Dubuque participates in the Certified Local Government (CLG) program of the State Historic Preservation Office. A benefit of being a CLG is that the City can conduct federally mandated Section 106 reviews locally, as opposed to sending each project to the State. This saves paperwork and review time. As a CLG, the City has received grants to conduct a variety of historic preservation activities including development of design guidelines and the phased survey/evaluation program. A CLG grant partly funded an archeological survey/evaluation and NRHP nomination for Eagle Point Park, matched with an in-kind donation of services by a local preservation consultant. The City utilizes local support coupled with CLG Grants annually to support surveys, preservation plans and preservation education, like the example of co-hosting the Preserve Iowa Summit in 2020.

CH.a.04 - Historical Society activities: The City of Dubuque Historic Preservation Commission is described in CH.a.01. A separate non-profit organization, the Dubuque County Historical Society has an extensive archive and museum (National Mississippi River Museum & Aquarium) associated with the history of City of Dubuque, Dubuque County, and the Mississippi River. In addition, Loras College holds the Center for Dubuque History, an extensive archive located in the Loras College library. Other archives and collections include the Carnegie Stout Public Library, the Dubuque Museum of Art (with extensive Edward Curtis and Grant Wood collections) and the Archdiocese of Dubuque.

CH.b.01 - Effective communication of ordinances, policies, and restoration methods: The Planning Department and Historic Preservation Commission work together to promote and educate on ordinances with information on the website, publications, and contacts to assist homeowners and businesses in preservation and restoration.



Figure 12 City of Dubuque from Cleveland Park

CH.b.02 - National Register of Historic Places district and/or individual designations in place: Dubuque's nationally recognized cultural resources including 2 National Historic Landmarks, 1 archeological district, 19 historic districts, and 48 structures individually listed in the NHRP. The two Dubuque National Historic Landmarks include Dubuque County Jail and William M. Black steamboat.

The City Council has preserved 696 structures in 5 local historic districts: Cathedral, Jackson Park, Langworthy, West 11th Street, and Old Main. In 2005, all 5 local historic districts were listed in the National Register and designated as Urban Revitalization Areas for tax

abatement. The City Council has designated 11 local landmarks and landmark sites: City Hall, Dubuque County Courthouse, Old Dubuque County Jail, William M. Black steamboat, Shot Tower, Mathias Ham House, Julien Dubuque Monument, Four Mounds Estate, Eagle Point Park, Carnegie-Stout Public Library and Dubuque-Dunlieth Bridge. All 11 local landmarks also are listed in the National Register. The City Council has designated 4 individual historic properties. These properties are not of a landmark status or located within a historic district, but they do have prehistoric, historic, architectural, archeological and/or cultural significance. Two are also listed in the NRHP.

The Historic Preservation Commission reviews demolition requests in the 9 conservation districts

designated by the City Council that protect 1,204 structures in the downtown and surrounding older neighborhoods outside of locally designated historic districts.

CH.b.03 - Preservation of natural and/or agricultural areas: The City of Dubuque has prioritized preserving and making accessible to the public natural areas, especially along the Mississippi River. Three natural areas stand out 1. Mines of Spain National Historic Landmark – the City owns 99 acres including the E.B. Lyons Interpretive Center and the Julien Dubuque Monument, while the Iowa Department of Natural Resources owns and co-manages the remaining 1,292 acres, 2. Eagle Point Park National Register Historic District – 172 acres including a recent donation that added 12 acres and 3. Four Mounds National Register Historic District and natural areas including 99 acres.

The City has also worked to make the Mississippi River accessible to the public through the development of the Port of Dubuque (North 79 acres, South 26 acres, which is in a pre-development stage) and the Chaplain Schmitt Island (167 acres). Together these areas house riverwalks, Veteran's Memorial, Ice Arena, riverfront camping, restaurants, brewery/winery, the historic Shot Tower, the National Mississippi River Museum & Aquarium, a marina, hotels and a waterpark, businesses and two casinos, one privately owned and one owned by the City of Dubuque for the benefit of the Community. The City is also working with a developer who is creating the first mixed use market rate housing development at the Port of Dubuque creating housing in a walkable area.

The Bee Branch Creek Greenway reduces flooding pressure in our Washington & Northend Neighborhoods. The amenity features a 1,938-foot-long creek and floodplain, a multi-use trail system, a play area, scenic overlooks, an urban orchard and garden, and an outdoor amphitheater which provides a venue for teaching and neighborhood gatherings.

CH.b.04 - Preservation of documents and records, both oral and written, and artifacts: The City of Dubuque (incorporated 1833) has an extensive archive of documents, some of which predate the State of Iowa (incorporated 1837), as Dubuque is Iowa's first city, aka "The Key City". The City has partnered with colleges, Carnegie Stout Public Library and non-profits to archive and make accessible to the public the following collections: City Directories to 1857, City Council Proceedings to 1833, Telegraph Herald archives to latter 19th Century, Building permit records to the early 20th Century, [Encyclopedia Dubuque](#), Surveys of historic neighborhoods and sites, from 1973, 1978, 1986, and many other 21st surveys, and many collections of other City records, photograph collections, maps and other documents

CH.b.05 - Education: historical publications/websites, interpretive signage, tours, museums, and programs in place: The City of Dubuque's [Historic Preservation](#) webpage has a wealth of reports, surveys, National Register nominations and other information collected about Dubuque's built environment, districts, landmarks and sites. Items are available to anyone online, allowing staff to assist remotely with research when needed, rather than require the public to visit the office by appointment. Heritage Works, Dubuque non-profit provides education programming highlight Dubuque's rich historic architectural heritage.

CH.b.06 - Programs in place to encourage youth involvement: The Multicultural Family Center's 8-week Discover Your Roots program explored with teens their identities and sense of belonging through conversations and activities related to genealogy, Dubuque's Black Heritage Survey, evolution of skin color, family heritage, the importance of genetic diversity, and how culture relates to mental health. Black Men Coalition mentors black youth and encourages involvement.

CH.c.01 - Signage in place for historic neighborhoods and/or structures Signage is in place for several of the historic districts in the community and signage at many historic structures.

CH.c.02 - Historical museum(s) and/or interpretive displays maintained: The National Mississippi River Museum and Aquarium as well as the Mathias Ham House and all their displays are very well maintained.

CH.c.03 - Cemeteries, monuments, and/or plaques: The City does not maintain any cemeteries. Many historical monuments and plaques are displayed at various locations throughout the city. Interpretive signage is also available in locations such as in the Port of Dubuque, Bee Branch Creek Greenway, along the Heritage trail and at Eagle Point Park.

CH.c.04 - Community heritage promoted through tours (guided or self), brochures, Smartphone apps, etc. None known.

CH.c.05 - Parades, festivals, events, programs commemorating heritage: In partnership with the Multicultural Family Center, many local groups and organizations hold events in the community commemorating heritage. Celebrate Africa and the Diaspora, Indigenous Peoples' Day Celebration, India Independence Day Celebration, Dubuque Latinx Fiesta, Dia De Los Muertos, The Diaspora Experience: Living as Black in the United States, Juneteenth and many more. Oktoberfest and Irish Hooley are organized and led local families alongside a ton of volunteers.

CH.d.01 - Volunteer participation in community's heritage activities: The City of Dubuque regularly partners with colleges, non-profit organizations, our Library and other groups to undertake projects to research, archive, interpret and preserve Dubuque's rich heritage. For example, with the Black Heritage Survey currently in process a multi-faceted consultant team are working with two different college classes to undertake research and multiple local historians who are helping with individual topics and themes, as part of the larger project team.

Another example includes the planning for the upcoming remembrance ceremony for the 150-year anniversary of the devastating Rockdale flood, which happened on the evening of America's Centennial, killing 39 people. Working with multiple community historians as volunteers, the City will share their work researching the area and the flood's impact, working with the community to commemorate this tragic event.

The Ken Kringle Historic Preservation Award recognizes annually excellence in historic preservation. Awards are announced annually for the best preservation efforts located in the city of Dubuque. Individuals and businesses that invest in their properties are recognized.

CH.d.02 - Volunteers participate in maintaining historical sites and structures: The National Mississippi River Museum has a robust volunteer program.

OVERALL IMPRESSION

OVERVIEW: Dubuque's natural environment leaves a lasting overall impression. The many visitors to our community rave about the natural beauty as well as the flower, landscapes, historic nature, and environmental stewardship of our community. The amenities and beautiful districts set Dubuque apart from other cities.

Ol.a.01 - Signage ordinances: The city's planning department manages the [sign ordinances](#).

Ol.a.02 - Ordinances in place to address blight issues: Many city departments have staff dedicated to addressing blight issues.

Ol.a.03 - Code enforcement/compliance officer on municipal staff: The city's planning department has a zoning enforcement officer on staff. The city's housing and construction services department also have housing inspectors to enforce city codes. The City's health department also has animal control officers for enforcement.

Ol.a.04 - Design style determined, applied, and consistent for site furnishings, crosswalks, gateway entry features, banners, wayfinding signage, etc. The Port of Dubuque and Chaplain Schmitt Island have established design standards that are followed. The Old Town Neighborhood Overlay District has design guidelines. The Historic Millwork District and Main Street has a consistent design style as well. Each of the industrial/technology parks has its own specific entry signage.

Ol.b.01 - Site furnishings in place: water features, lamp posts, benches, bicycle racks, drinking fountains, trash and recycling receptacles, containers, planters, and cigarette receptacles: Site furnishings are provided in public parks. Specific areas especially in the downtown have cigarette receptacles. The water feature for Dubuque is the Mississippi River.

Ol.b.02 - Crosswalks well-marked: Cross walks are near schools and are in parts of the downtown area.

Ol.b.03 - Public restrooms available: The Bluff Street Historic District has a public restroom building. City hall, the historic federal building, Port of Dubuque marina, Carnegie Stout library and the Intermodal center all have public restrooms. Thirteen parks also have public restrooms within the park.

Ol.b.04 - Community gateway entry features: The west and south entrances to the city as well as when turn from Highway 20 and enter the downtown area features Masterpiece on the Mississippi gateway signs. Highway 20 spanning approximately one mile is maintained and landscaped by the City of Dubuque Park Division providing a grand entrance to Dubuque from Illinois. The industrial parks are marked with gateway signage in the Technology Park which is near the south entrance to Dubuque, Kerper Boulevard Industrial Park, and Dubuque Industrial Center West.

Ol.b.05 - Use of banners, murals, and/or public art: Banners are located throughout the Port of Dubuque, Bee Branch Creek Greenway, and the Historic Millwork District. Historic brick buildings throughout downtown Dubuque are adorned with [40 different murals](#) all the work of volunteer, non-profit Voices Production. The city sponsors annually a storm drain mural program where public art related to storm water can be displayed near a storm drain. [Art on the River](#), a juried annual art collection of sculptures changes each year.

Ol.b.06 - Wayfinding signage: Dubuque has wayfinding signage organized by districts throughout the entire city. Specific pedestrian wayfinding is in the Main Street/Downtown area. Bike Trail wayfinding is located throughout the city.

Ol.b.07 - Use of non-plant seasonal decorations (lights, ornaments, etc.): Main Street features holiday lighting in Washington Park and greenery wrapped poles for the winter season. Murphy Park is transformed for the holiday season with a huge drive through light display Reflections in the Park available from Thanksgiving through the third of January 3 sponsored by Hillcrest Family Services.

Ol.c.01 – Condition of structures, buildings, decks, patios, etc related to lack of vandalism, graffiti, peeling or faded paint, and rust: The city monitors all areas of the community for vandalism and graffiti. Vandalism is fixed as soon as possible or at least elements of it removed ASAP. The city is aggressive in addressing vacant and abandoned building issues.

Ol.c.02 - Condition of infrastructure: roadways, road shoulders, curbs, medians, sidewalks, railroad crossings, crosswalks/pavement markings, transformers, and utility poles related to lack of weeds, vandalism, litter, graffiti, peeling or faded paint, and rust: Public Works has an aggressive pavement overlay program. All city personnel in Parks and Public Works have a directive if graffiti is seen on anything public it should be removed asap after alerting the Police Department.

Ol.c.03 - Condition of signs and site furnishings: water features, lamp posts, benches, bicycle racks, drinking fountains, trash and recycling receptacles, containers, planters, and cigarette

receptacles: As a city we try to stay ahead of replacements of these items or repainting as needed. We also add as needed to assist in problem areas or address needs like additional bike racks. No water features exist.

Ol.c.04 - Condition of vacant lots, stormwater retention ponds, and swales: The Housing inspectors enforce city ordinances to assure the maintenance of vacant lots occur and escalating steps assure compliance. Stormwater retention ponds are city owned and maintained once turned over from the developer.

Ol.c.05 - Control of excessive stake signs, billboards, and posted flyers: The city has an ordinance related to signage, political signs as well as billboards and their use.

Ol.c.06 - Street sweeping schedule: The city's public works department manages the street sweeping schedule. The schedule is as follows: Sweep the downtown streets (50 lane miles) everyday Monday through Friday according to the posted street parking restrictions; sweep main arterials every two weeks; sweep residential streets every two months (weather permitting).

Ol.d.01 - Volunteer participation and/or funding of community revitalization and improvement initiatives: A community led initiative called [Days of Caring](#) is volunteer led and driven spring event that matches needs of non-profits and the community with eager volunteers. 4927 hours were donated by 1148 volunteers serving 34 agencies and completing 50 projects.

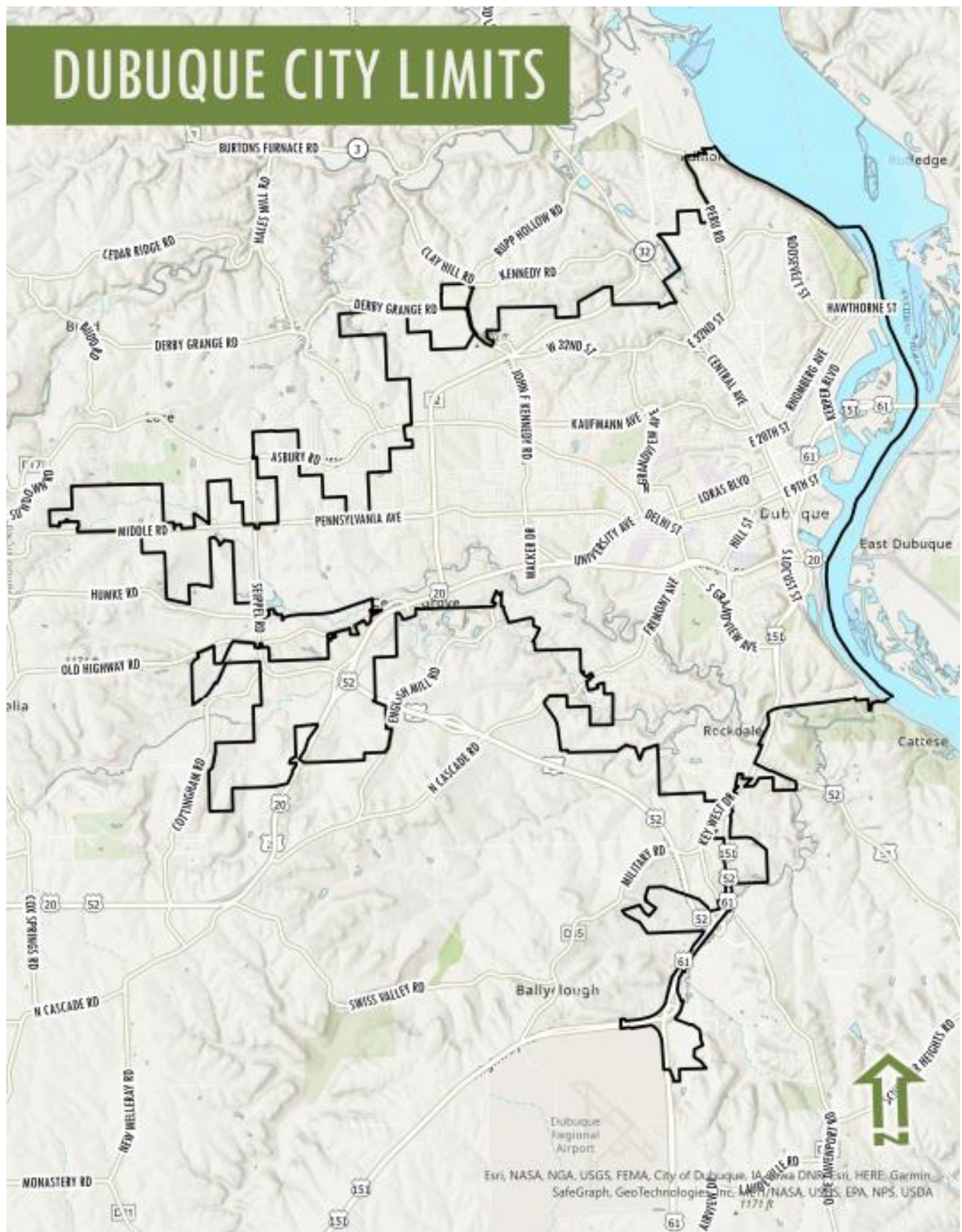
Ol.d.02 – Program or process for residents to fund public amenities such as memorial benches: The Veterans Memorial Plaza has a memorial paver area and benches which currently has more than 3000 veterans honored. An app has been developed as well as a directory on site to assist with persons finding their loved ones and friends. The city has a bench and tree program that has been on hold during COVID due to staffing shortages however has hopes in the next year to start it up again. A backlog of ... requests will begin to be worked on. Named benches and trees exist in many parks and an active program is available for naming opportunities in the [Bee Branch Creek Greenway](#). The Dubuque Arboretum has a memorial program as well. The city has a naming policy that has been used for the Dubuque Skate Park in Flora Park, Miracle League Complex project and is currently assisting with naming in the Multicultural Family Center.

THANK YOU



Figure 13 Eagle Point Park Pavilion

DUBUQUE CITY LIMITS



COMMUNITY CONTACTS

An extensive updated list will be provided during the visit.

Name	Affiliation/Title	Email	Cell phone
Marie Ware	Leisure Services Manager	mware@cityofdubuque.org	563-564-7566
Steve Fehsal	Park Division Manager	sfehstal@cityofdubuque.org	563-581-9008
Kristen Dietz	Lead Administrative Assistant	kdietz@cityofdubuque.org	563-580-4454
Jennifer Tigges	Park and Recreation Commissioner and Friends of the Mines of Spain	Jennifer.tigges@gmail.com	563-590-9868
Jared McGovern	Curator of Conservation Programs with Mississippi River Museum and Aquarium	jmcgoven@rivermuseum.com	563-557-9545
Cori Burbach	Assistant City Manager	Cburbach@cityofdubuque.org	563-589-4110
Brad Cavanagh	City of Dubuque Mayor	bcavanagh@cityofdubuque.org	563-690-6502
Gina Bell	Sustainability Coordinator	Gbell@cityofdubuque.org	563-690-6038
Chris Olson	Assistant City Planner	Colson@cityofdubuque.org	563-589-4210
Kelly Goossen	Horticulturist	kgoossen@cityofdubuque.org	563-581-9008