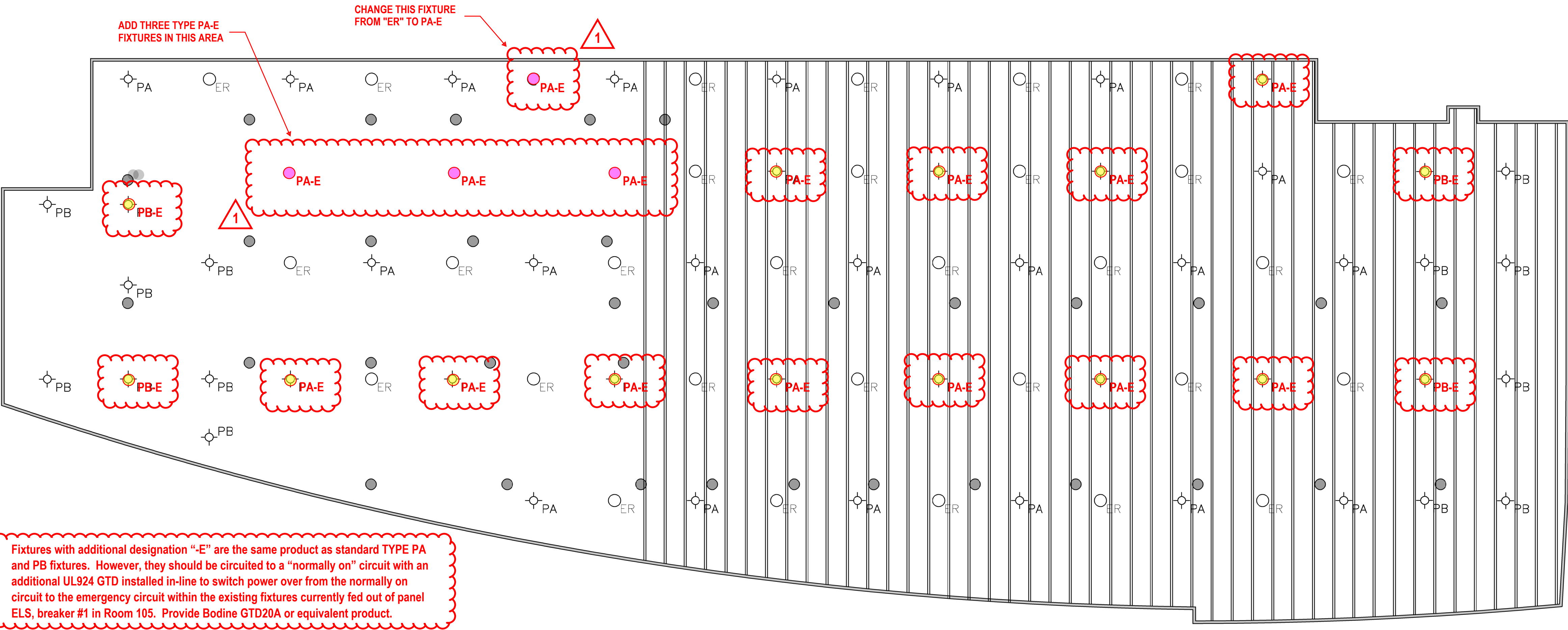


| TYPE | DESCRIPTION   | MANUFACTURER         | MODEL   | SOURCE    | DELIVERED LUMENS | OPTICS              | CONTROL/ DRIVER  | VOLTS | WATTS |
|------|---|----------------------|---|-----------|------------------|---------------------|------------------|-------|-------|
| PA   | PENDANT MOUNT 19" DIAMETER DOWNLIGHT, TYPE 5 MEDIUM DISTRIBUTION, BIRD SHROUD ACCESSORY       | ACUITY-LITHONIA      | VCPG LED V4 P2 30K 80CRI T5M MVOLT PM PIR DNAXD VCPGBDS DNAXD | LED/3000K | 4626             | TYPE 5 MEDIUM       | OCCUPANCY SENSOR | 277   | 34    |
| PA   | STEM MOUNT 19" DIAMETER DOWNLIGHT, TYPE 5 WIDE DISTRIBUTION, BIRD SHROUD ACCESSORY            | COOPER-MCGRAW-EDISON | TT-D2-830-U-WQ-STM-30L-AP-MS/DIM-L20 TT/BG-UP-AP              | LED/3000K | 4695             | TYPE 5 WIDE         | OCCUPANCY SENSOR | 277   | 39    |
| PA   | PENDANT MOUNT 21" DIAMETER DOWNLIGHT, TYPE 5 WIDE SQUARE DISTRIBUTION, BIRD SHROUD ACCESSORY  | VISIONAIRE           | PRK-T5L5-35W-3K-UNV-PM24-GY-WLG-WSC-20                        | LED/3000K | 4434             | TYPE 5 WIDE SQUARE  | OCCUPANCY SENSOR | 277   | 35    |
| PB   | PENDANT MOUNT 19" DIAMETER DOWNLIGHT, TYPE 5 CONCENTRATED DISTRIBUTION, BIRD SHROUD ACCESSORY | ACUITY-LITHONIA      | VCPG LED V8 P7 30K 80CRI T5E MVOLT PM PIR DNAXD VCPGBDS DNAXD | LED/3000K | 15503            | TYPE 5 CONCENTRATED | OCCUPANCY SENSOR | 277   | 122   |
| PB   | STEM MOUNT 19" DIAMETER DOWNLIGHT, TYPE 5 CONCENTRATED DISTRIBUTION, BIRD SHROUD ACCESSORY    | COOPER-MCGRAW-EDISON | TT-D9-830-U-CQ-STM-30L-AP-MS/DIM-L20 TT/BG-UP-AP              | LED/3000K | 18001            | TYPE 5 CONCENTRATED | OCCUPANCY SENSOR | 277   | 173   |
| PB   | PENDANT MOUNT 21" DIAMETER DOWNLIGHT, TYPE 5 CONCENTRATED DISTRIBUTION, BIRD SHROUD ACCESSORY | VISIONAIRE           | PRK-T5LR-115W-3K-UNV-PM24-GY-WLG-WSC-20                       | LED/3000K | 14995            | TYPE 5 LONG ROUND   | OCCUPANCY SENSOR | 277   | 115   |

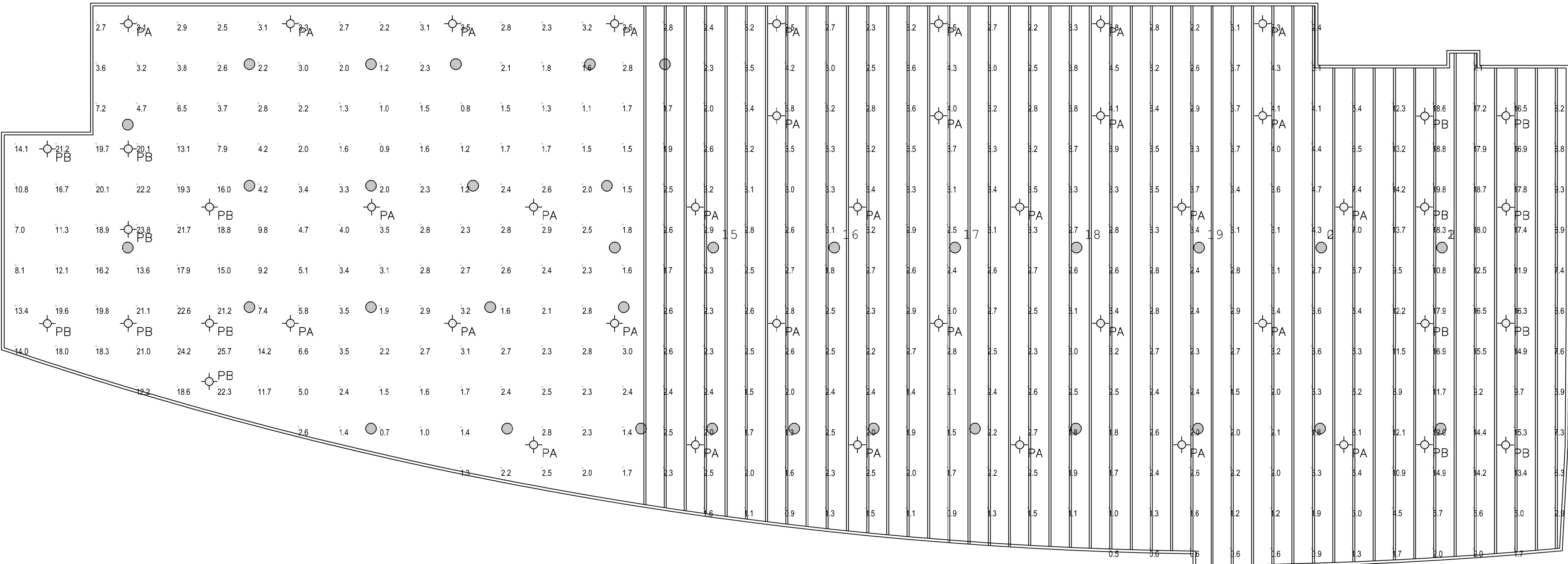
FIXTURE SCHEDULE

- GENERAL LIGHTING NOTES:
- CONTRACTOR TO REVIEW EXISTING CONDITIONS AND VERIFY LOCATIONS AND CONDITIONS OF EXISTING WIREWAY, BOXES, AND OTHER NON-LIGHTING EQUIPMENT IN THE GARAGE.
  - DRAWINGS ARE SCHEMATIC ONLY AND ATTEMPT TO SHOW PROPOSED LOCATIONS OF FIXTURES BASED ON EXISTING LOCATIONS. NO NEW LOCATIONS ARE CURRENTLY PROPOSED.
  - CONTRACTOR SHALL FAMILIARIZE THEMSELVES WITH COMPATIBILITY OF NEW LIGHT FIXTURES TO CEILING MATERIAL, ADJACENT CONSTRUCTION, AND EXISTING SUPPORTING SYSTEMS TO ENSURE THAT NEW LIGHTING FIXTURES CAN BE UTILIZED AS DESIGNED.
  - CONTRACTOR WILL BE RESPONSIBLE FOR ALL MISCELLANEOUS HARDWARE NECESSARY AT, ABOVE, OR BELOW THE CEILING PLANE TO SUPPORT LIGHT FIXTURES.
  - ALL LIGHT FIXTURES SHALL HAVE A UL LABEL OR ETL LABEL.
  - CONTRACTOR SHALL COORDINATE ALL FIXTURE LOCATIONS AND MOUNTING MEANS WITH OTHER TRADES IN THESE AREAS. DO NOT SUPPORT ANY FIXTURES FROM ANOTHER TRADE'S EQUIPMENT OR TO IMPEDE ACCESS TO SAME EQUIPMENT. SUSPEND FIXTURES FREE OF OBSTACLES TO ALLOW MAXIMUM LIGHT ON THE REQUIRED WORKING AREAS.
  - EXISTING WIRING TO REMAIN IN PLACE. VERIFY SOURCE PANEL FOR ALL CIRCUITS AND ENSURE THAT CONDITION OF WIRE, BREAKERS, AND OTHER DEVICES IN THE EXISTING SYSTEM ARE STILL OPERABLE.



PARKING GARAGE LIGHTING PLAN

| QUANTITIES |    |    |
|------------|----|----|
| PA         | 31 | 36 |
| PB         | 16 |    |
| ER         | 31 | 30 |



ILLUMINANCE POINT CALCS

| GARAGE INTERIOR  |      |
|------------------|------|
| ILLUMINANCE (FC) |      |
| AVERAGE          | 2.52 |
| MAXIMUM          | 4.50 |
| MINIMUM          | 0.50 |
| AVG/MIN RATIO    | 5.04 |
| MAX/MIN RATIO    | 9.00 |

\* PHOTOMETRICS SHOWN FOR REFERENCE ONLY.