

US 61/151 BRIDGE DECK OVERLAY

PROJECT OVER THE PEOSTA CHANNEL

ABOUT THE PROJECT

For questions, contact:

Hugh Holak, P.E.
Iowa DOT Resident
Construction Engineer
563-927-2397

IOWA DOT PROJECT: JUNE - NOVEMBER 2024

An Iowa Department of Transportation (Iowa DOT) project will require some long-term lane closures and detours on US Highway 61/151 this summer and fall. The Iowa DOT bridge deck overlay project will improve the surface of the US 61/151 bridge over the Peosta Channel north of 16th St. and is expected to begin in June and be completed in November.

EXPECTED TRAFFIC IMPACTS

Note, the following construction schedule may change due to weather conditions.

JUNE 2024

STAGE 1

The first stage of traffic control, scheduled for June through August, will require the closure of both northbound lanes of US 61/151 from the 9th St./11th St. entrance ramp to Chaplain Schmitt Island.

- The stage will also require the closure of both the exit ramp from US 61/151 to Kerper Boulevard and the entrance ramp from Kerper Blvd. to 151/61.
- During this closure of the northbound lanes of US 61/151, northbound and southbound traffic will be merged into two-way traffic in the two southbound lanes of US 61/151.
- Northbound US 61/151 traffic will be able to access Kerper Blvd. and Chaplain Schmitt Island by exiting US 61/151 at the 7th St. exit ramp.

SEPT 2024

STAGE 2

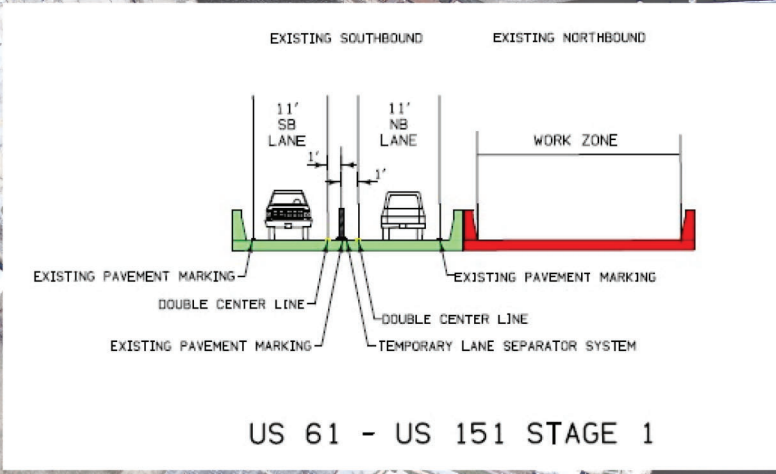
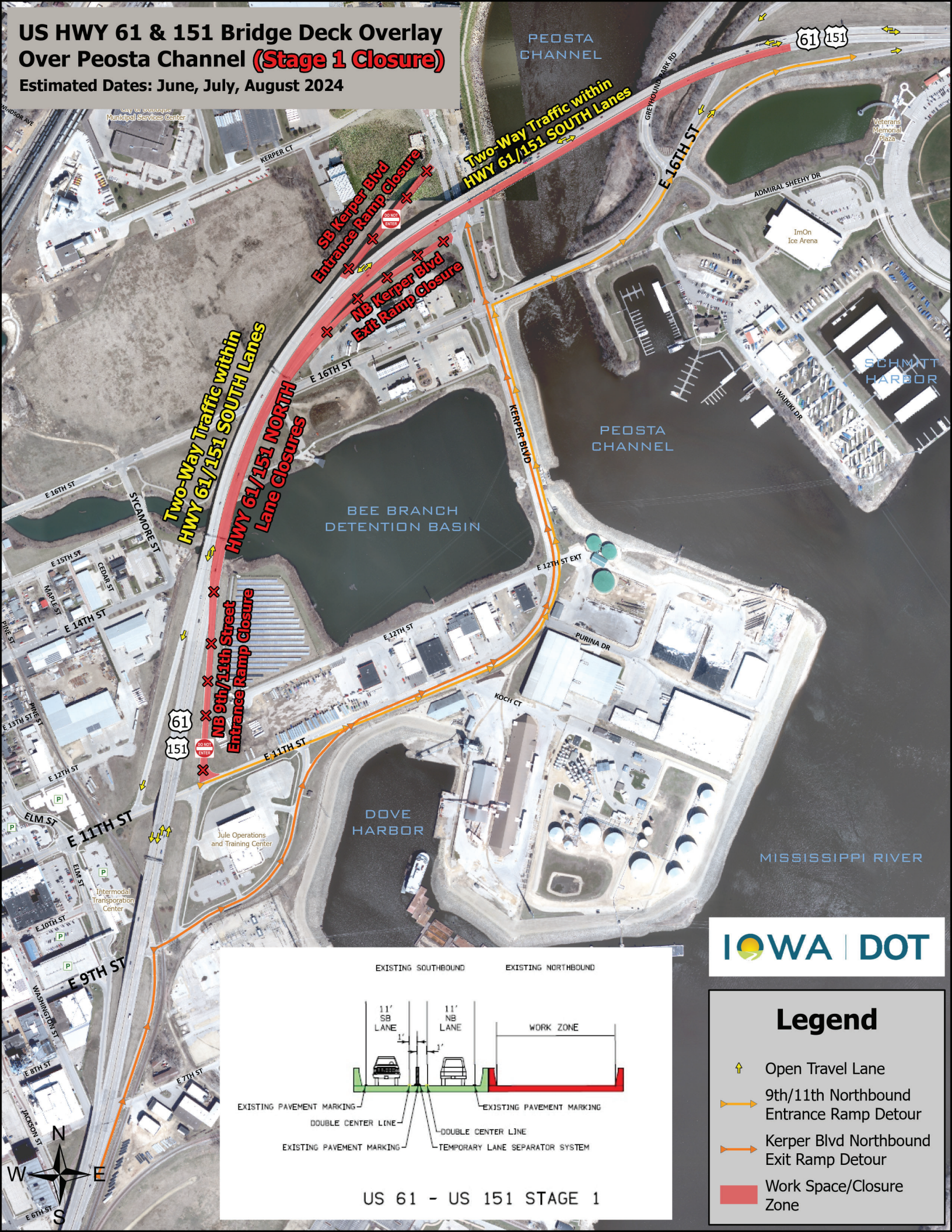
The second stage of the project, estimated to be from September through November, will reopen the northbound lanes of US 61/151 and require closure of the southbound lanes, with northbound and southbound traffic being merged into two-way traffic in the northbound lanes.

- The US 61/151 southbound exit ramp to 9th/11th St. will be closed for this stage and the Kerper Blvd. entrance ramp to southbound US 61/151 will remain closed, but the 9th/11th St. entrance ramp to northbound US 61/151 will be open for this stage.
- Northbound US 61/151 traffic will be able to access Kerper Blvd. and Chaplain Schmitt Island by exiting US 61/151 at the 7th St. exit ramp.

An announcement will be made when the project start date is finalized and updates will be shared when traffic control shifts from stage one to stage two.

US HWY 61 & 151 Bridge Deck Overlay Over Peosta Channel (Stage 1 Closure)

Estimated Dates: June, July, August 2024



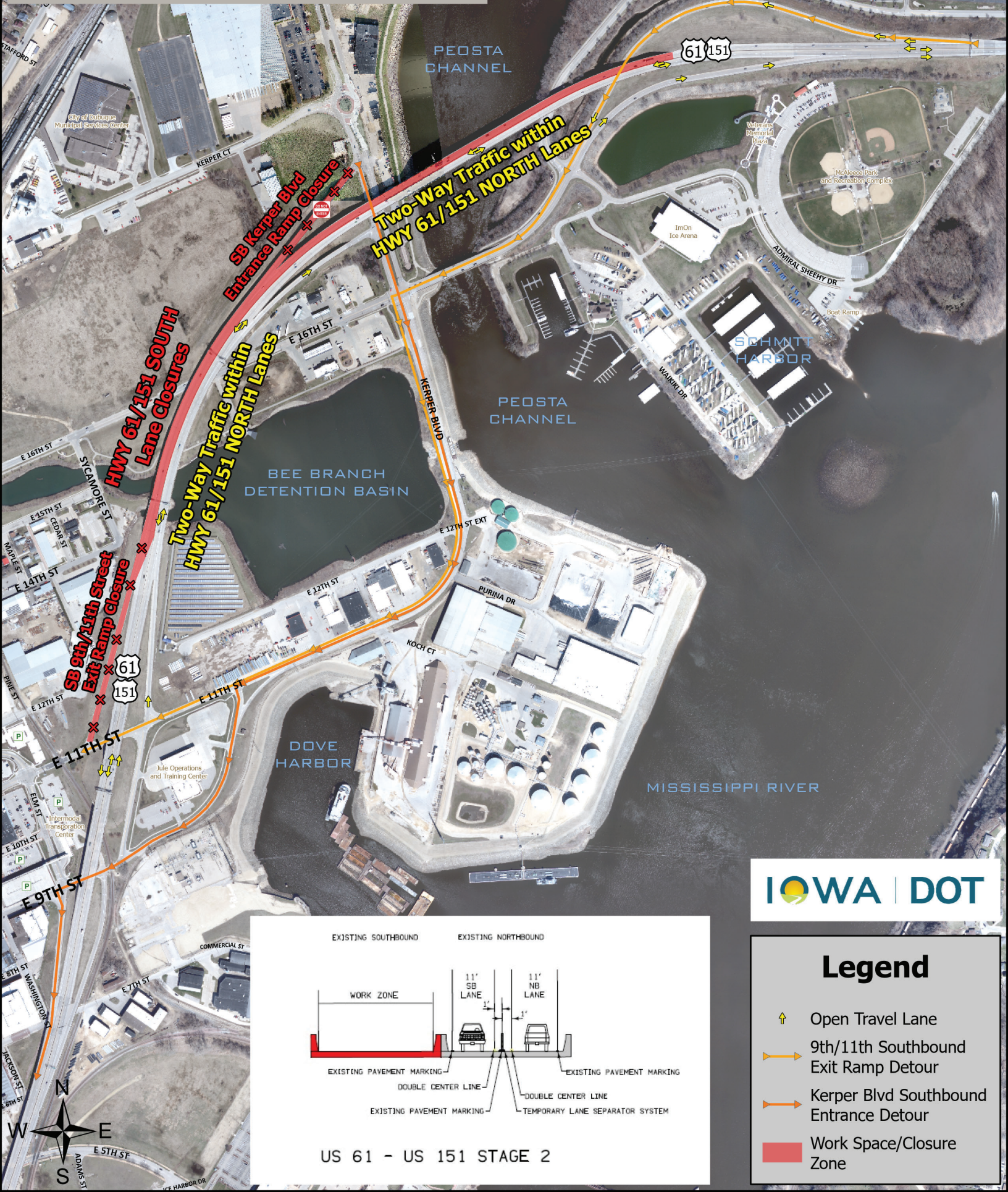
IOWA DOT

Legend

- Open Travel Lane
- 9th/11th Northbound Entrance Ramp Detour
- Kerper Blvd Northbound Exit Ramp Detour
- Work Space/Closure Zone

US HWY 61 & 151 Bridge Deck Overlay Over Peosta Channel (Stage 2 Closure)

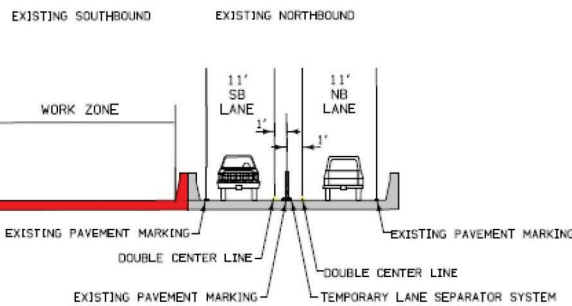
Estimated Dates: September, October, November 2024



IOWA DOT

Legend

- Open Travel Lane
- 9th/11th Southbound Exit Ramp Detour
- Kerper Blvd Southbound Entrance Detour
- Work Space/Closure Zone



US 61 - US 151 STAGE 2