

Legend

Detour Route

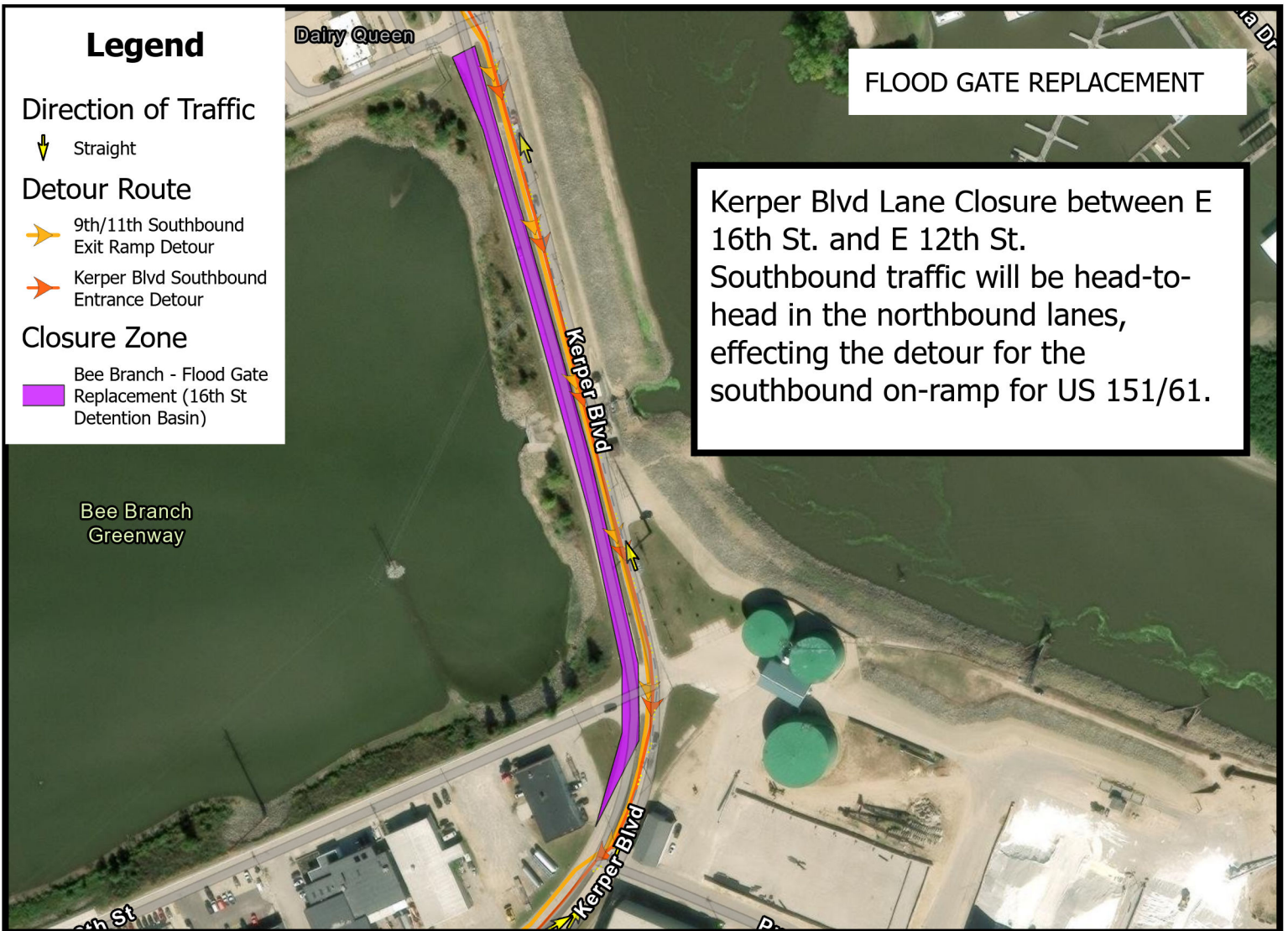
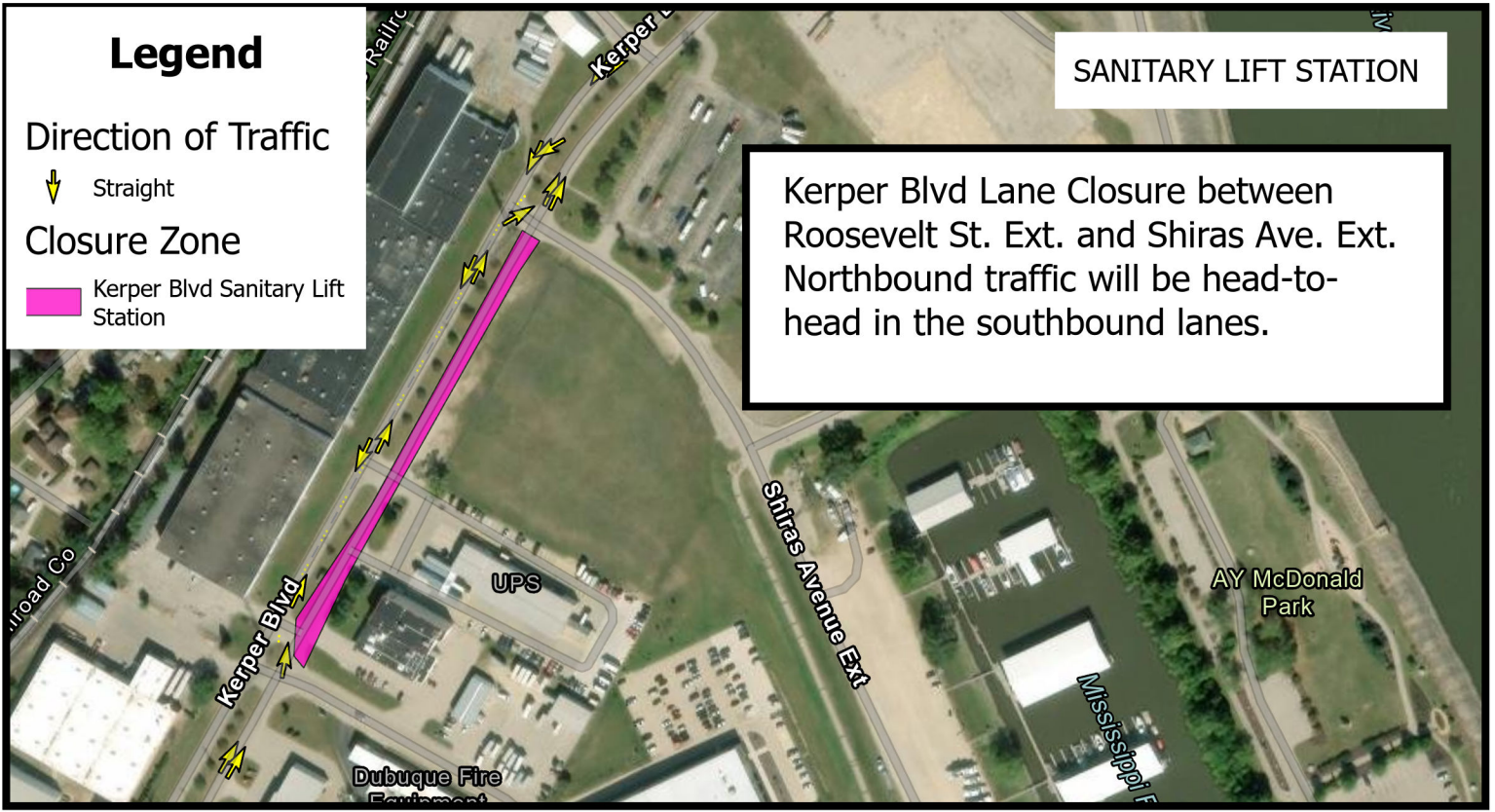
- 9th/11th Southbound Exit Ramp Detour
- Kerper Blvd Southbound Entrance Detour

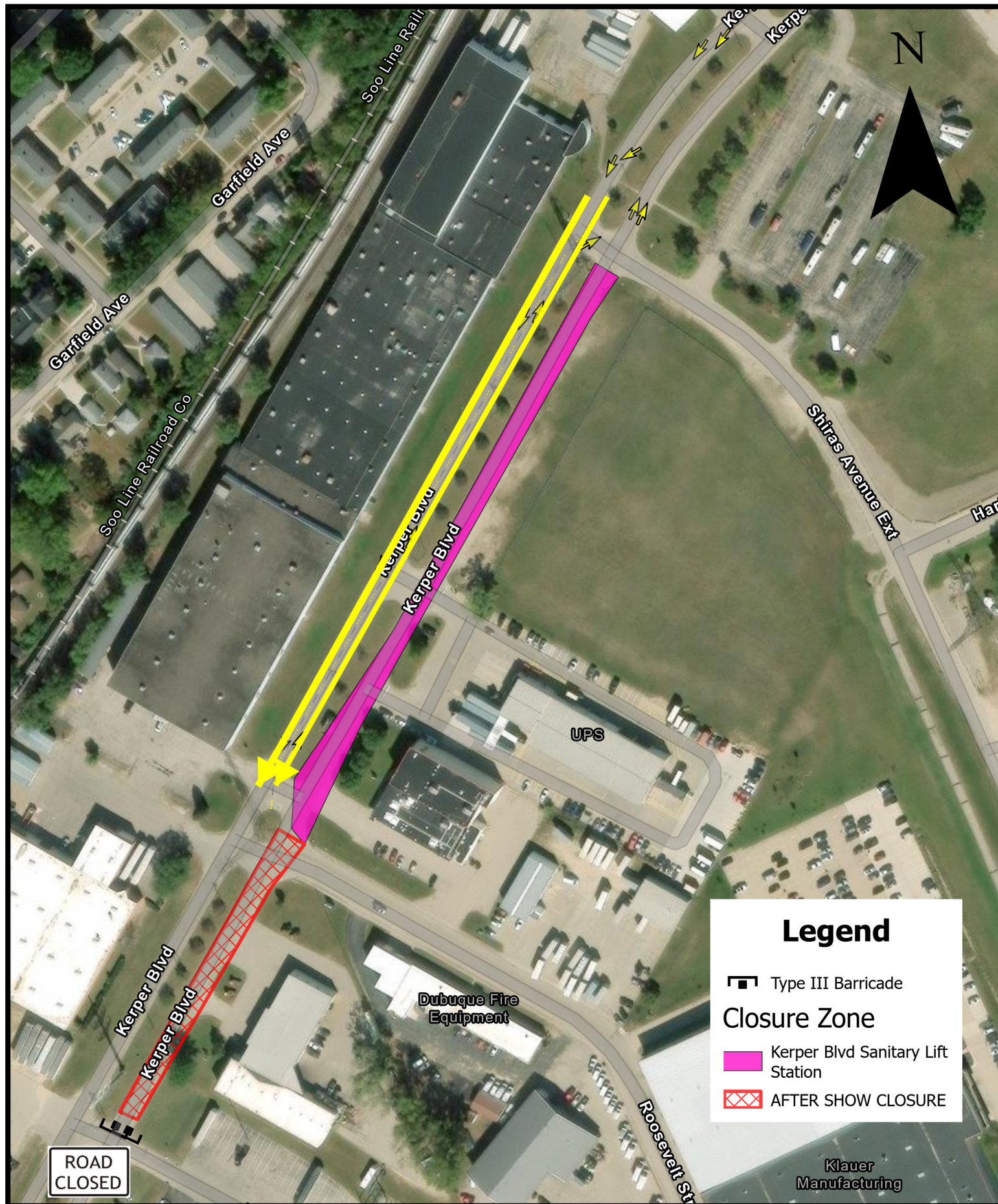
Closure Zone

- Bee Branch - Flood Gate Replacement (16th St Detention Basin)
- Kerper Blvd Sanitary Lift Station
- US Hwy 61-151 Northbound Lane

SANITARY LIFT STATION

FLOOD GATE REPLACEMENT





After Fireworks and Airshow, Kerper Blvd will use both lanes for southbound traffic to exit the event area.